

**For Immediate
Release:**
February 5, 2014

CONTACT:
Sue Cartun
TARMLS President
(520) 529-5126

Sean Murphy
Vice President, MLS
(520) 382-8792

Philip Tedesco, RCE, CAE
CEO, TAR & MLS
(520) 327-4218

Tucson Association of REALTORS®

Multiple Listing Service

Monthly Statistics

2013 YEAR END

Oh what a year! Although it seemed to pass in the blink of an eye, 2013 was a year of constant change, of sweeping regulations and most impactful for Southern Arizona, market recovery. Here are some of the trends, year over year:

- More closings. The total sales increased by 583 units, better than 4% increase from 2012.
- Homes are selling quicker. Average Days On Market decreased 5 days to only 54 days on market in 2013. That's a fast market, getting faster!
- Many homes are selling for more. Average sales price rose by 10% to over \$191,000.
- Average percentage of list price received on sales continues to strengthen:
 - 2009 - 94.59%
 - 2010 - 95.20%
 - 2011 - 96.41%
 - 2012 - 96.86%

Reflecting on 2013, it's clear Southern Arizona finds itself in a recovering market, many factors will continue to influence the speed and strength of the recovery. Employment growth, tourism attraction, economic development and support of existing local businesses are all fuel to build a strong economy and ultimately a strong real estate market with responsible home ownership.

2013 produced a great many productive and positive changes at TARMLS. Our Executive Vice President Sean Murphy led his extraordinary staff to new heights of service for our members.

MLS trainer Jeni Huber is always ready to help our members learn about the powerful tools flexmls has at our disposal. With her guidance, members learn great ways to serve their clients well. We thank each of the staff members who serve TAR/MLS members every day. They are truly incredible.

MLS Directors and Committee Chairs gave countless hours to the organization in 2013 for which I am forever grateful. I know 2014 will be no different in seeing our volunteer leaders bring their strengths to the table for the good of all. A special thank you goes to CEO Philip Tedesco for leading volunteers and staff to ever greater heights of accomplishment.

Under the amazingly capable stewardship of 2014 MLS President Kimberly Clifton, 2014 stretches before us as a vast number of days for us to enjoy our ever changing market. MLS will surely thrive and enjoy a year of great fulfillment. It's an exciting time! I'm so glad I get to be part of it!

Yours In Service,
Sue Cartun
2012, 2013 TARMLS President



Lifestyle Opportunities:
**No matter what area or type of home
you are interested in, you have a
variety of options.**
Financial:
**Multiple financing opportunities are
available**
Talk to a REALTOR®!
**With the complexity of a real estate
transaction, you need a REALTOR®.**



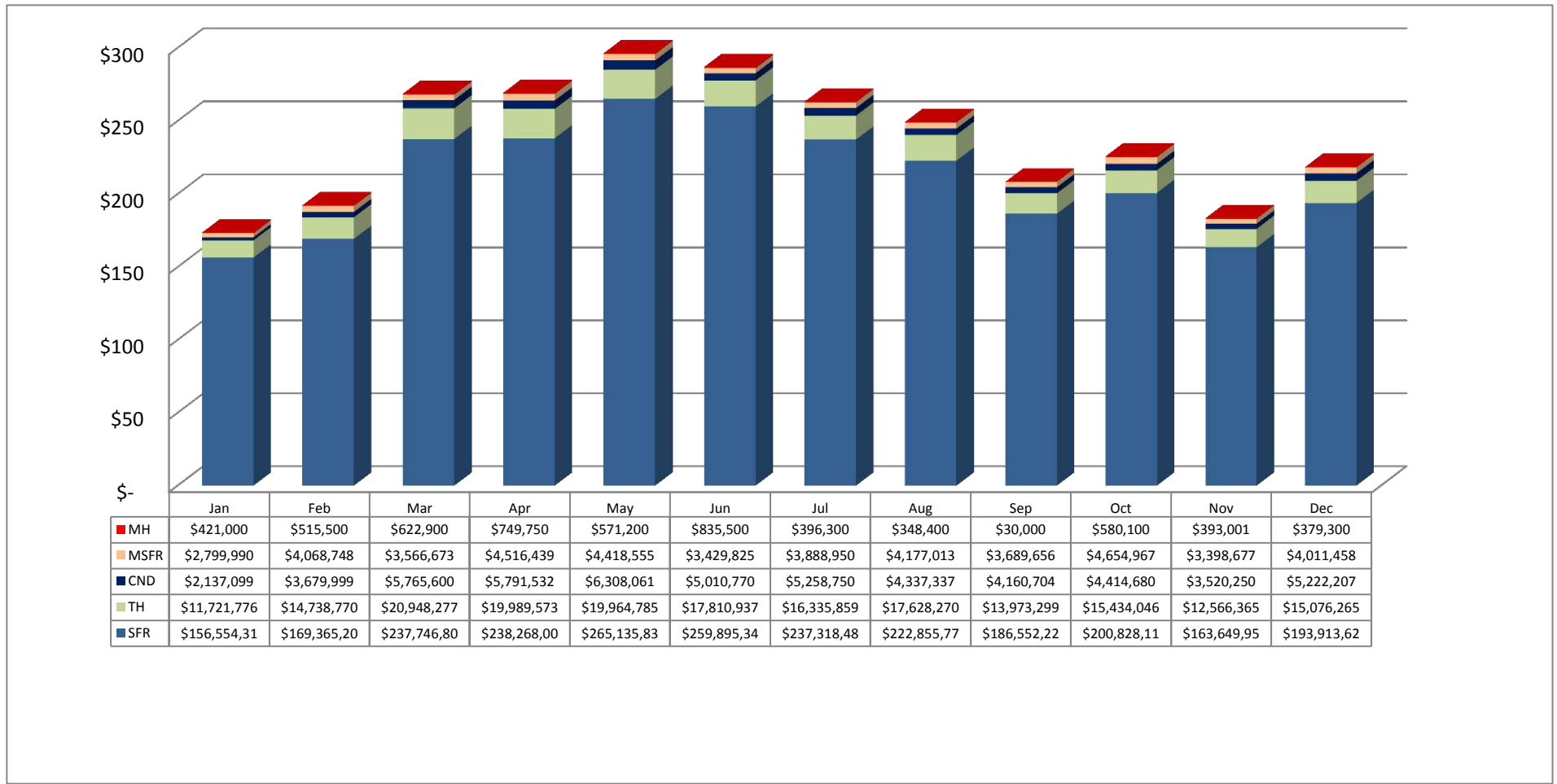
The Tucson Multiple Listing Service, Inc. is a wholly owned subsidiary of the Tucson Association of REALTORS®, dedicated to providing a reliable real estate database for members and the public. The Association represents the interests of 5,400 professionals in the real estate industry, and is affiliated with the National Association of REALTORS®. REALTOR® is a registered collective membership mark which may only be used by professionals who are members and subscribe to its strict code of ethics.

2013 MLS Year in Review Summary

	2003	2004	2005	2006	2007	2008	2009	2010	2011	2012	2013
Total Sales Volume	\$ 2,573,924,021	\$ 3,427,229,140	\$ 4,613,211,685	\$ 4,247,270,446	\$ 3,522,942,997	\$ 2,560,571,338	\$ 2,345,672,056	\$ 2,234,884,205	\$ 2,194,210,104	\$ 2,480,670,298	\$ 2,836,342,803
Total Sales Units	14,351	16,557	18,003	15,726	12,939	10,578	11,661	11,802	13,418	14,236	14,819
Total Units Listed	21,201	20,998	25,080	33,992	33,022	26,592	22,170	31,914	29,719	26,661	28,301
Average List Price	\$183,604	\$211,159	\$258,941	\$277,904	\$284,014	\$254,247	\$211,524	\$199,197	\$171,767	\$180,745	\$197,584
Average Sale Price	\$179,355	\$206,996	\$256,247	\$270,080	\$272,273	\$242,066	\$201,155	\$189,352	\$163,527	\$174,253	\$191,399
Average DOM /CDOM	58 / 75	54 / 75	31 / 39	49 / 69	67 / 104	78 / 123	78/113	88/121	82/107	59/75	54/69
Average % of LP received on Sales	97.69%	98.03%	98.96%	97.18%	95.87%	95.21%	95.10%	94.59%	95.20%	96.41%	96.86%

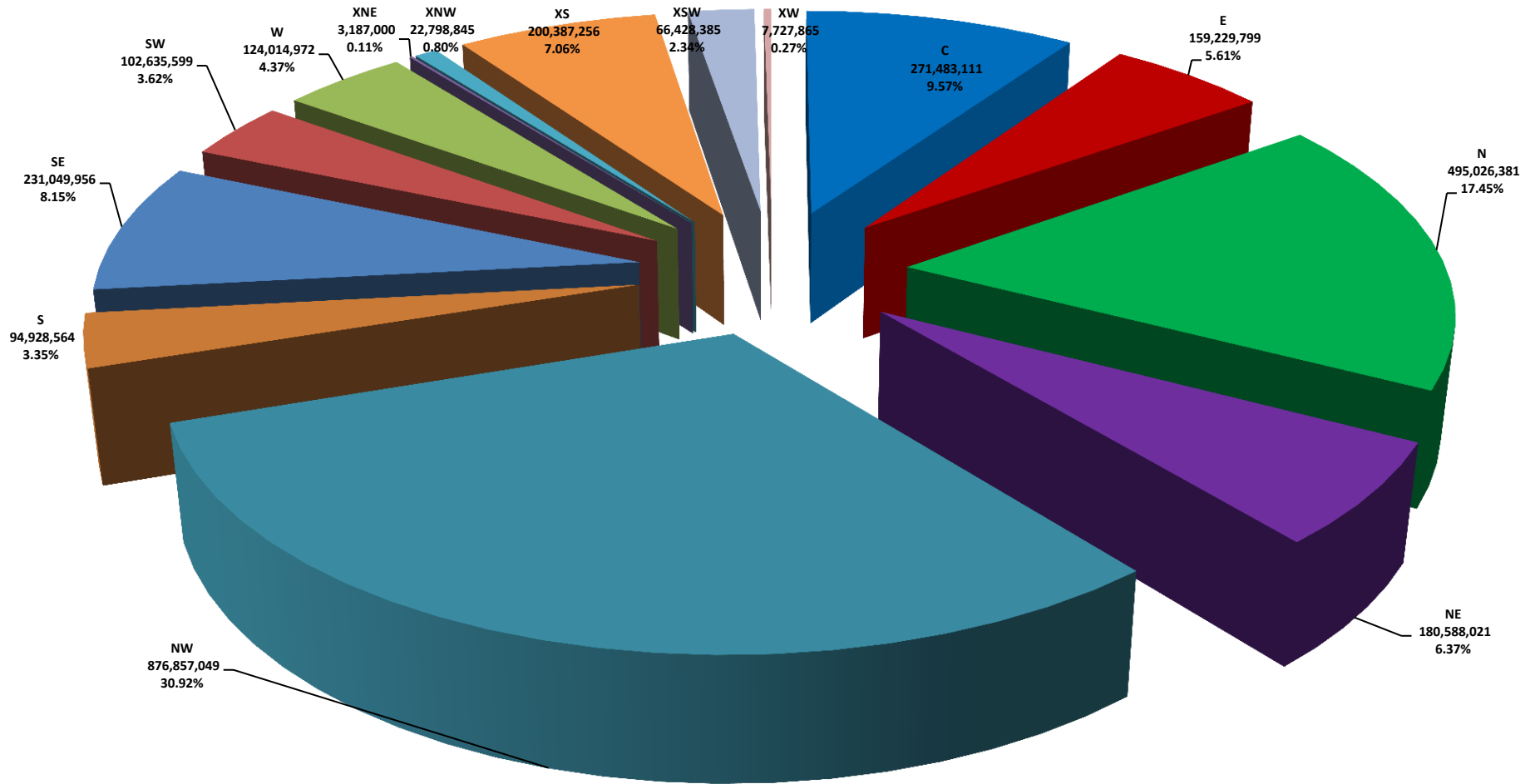
Please note: The data contained in this report is dynamic in nature and therefore subject to change and adjust with the passage of time. These figures and charts are an approximation of the flow of business as observed through the Tucson Association of REALTORS® Multiple Listing Service. This report does not represent all real estate activity in the area as it does not include unrepresented sales, commercial sales or a substantial portion of new home sales. Though the data and materials presented here are deemed to be substantially correct, neither the Tucson Association of REALTORS® nor the MLS guarantees nor is in any way responsible for its accuracy.

2013 All Residential Total Sales Volume by Month and Sub-Type



Please note: The data contained in this report is dynamic in nature and therefore subject to change and adjust with the passage of time. These figures and charts are an approximation of the flow of business as observed through the Tucson Association of REALTORS® Multiple Listing Service. This report does not represent all real estate activity in the area as it does not include unrepresented sales, commercial sales or a substantial portion of new home sales. Though the data and materials presented here are deemed to be substantially correct, neither the Tucson Association of REALTORS® nor the MLS guarantees nor is in any way responsible for its accuracy.

2013 All Residential Total Sales Volume % of Market by Area



Please note: The data contained in this report is dynamic in nature and therefore subject to change and adjust with the passage of time. These figures and charts are an approximation of the flow of business as observed through the Tucson Association of REALTORS® Multiple Listing Service. This report does not represent all real estate activity in the area as it does not include unrepresented sales, commercial sales or a substantial portion of new home sales. Though the data and materials presented here are deemed to be substantially correct, neither the Tucson Association of REALTORS® nor the MLS guarantees nor is in any way responsible for its accuracy.

YEAR END 2013 RESIDENTIAL SALES STATISTICS

2013 Residential Total Sales Units

	0-2 BR	3 BR	4 BR	5+ BR	ALL BR
C	636	927	224	45	1,832
E	195	611	282	41	1,129
N	388	479	372	87	1,326
NE	137	292	209	57	695
NW	846	1,728	1,005	202	3,781
S	176	578	238	21	1,013
SE	101	793	452	64	1,410
SW	189	452	258	29	928
W	187	426	147	16	776
XNE	6	2	1	-	9
XNW	15	113	79	11	218
XS	225	430	336	98	1,089
XSW	326	137	48	3	514
XW	21	51	26	1	99
Total	3,448	7,019	3,677	675	14,819

2013 SFR Total Sales Units

	0-2 BR	3 BR	4 BR	5+ BR	ALL BR
C	361	851	222	45	1,479
E	28	536	281	38	883
N	63	359	370	87	879
NE	22	253	206	57	538
NW	568	1,586	979	199	3,332
S	134	520	220	20	894
SE	72	720	433	63	1,288
SW	58	361	241	26	686
W	82	364	145	16	607
XNE	6	2	1	-	9
XNW	10	59	54	8	131
XS	170	394	326	96	986
XSW	126	80	28	2	236
XW	5	9	6	-	20
Total	1,705	6,094	3,512	657	11,968

2013 TH Total Sales Units

	0-2 BR	3 BR	4 BR	5+ BR	ALL BR
C	124	59	2	-	185
E	85	62	-	2	149
N	147	92	2	-	241
NE	65	33	3	-	101
NW	195	50	2	-	247
S	41	10	2	-	53
SE	25	35	-	-	60
SW	18	2	-	-	20
W	50	33	-	-	83
XNE	-	-	-	-	-
XNW	-	-	-	-	-
XS	49	4	2	-	55
XSW	155	8	-	-	163
XW	-	-	-	-	-
Total	954	388	13	2	1,357

2013 CNL Total Sales Units

	0-2 BR	3 BR	4 BR	5+ BR	ALL BR
C	149	11	-	-	160
E	82	13	1	1	97
N	178	28	-	-	206
NE	50	6	-	-	56
NW	44	12	1	-	57
S	-	-	-	-	-
SE	-	-	-	-	-
SW	3	2	-	-	5
W	42	5	-	-	47
XNE	-	-	-	-	-
XNW	-	-	-	-	-
XS	2	-	-	-	2
XSW	30	-	-	-	30
XW	-	-	-	-	-
Total	580	77	2	1	660

2013 MH Total Sales Units

	0-2 BR	3 BR	4 BR	5+ BR	ALL BR
C	1	1	-	-	2
E	-	-	-	-	-
N	-	-	-	-	-
NE	-	-	-	-	-
NW	13	5	1	1	20
S	-	1	-	-	1
SE	-	1	-	-	1
SW	58	15	1	-	74
W	5	1	-	-	6
XNE	-	-	-	-	-
XNW	-	1	-	-	1
XS	1	-	-	-	1
XSW	-	3	1	-	4
XW	2	-	-	-	2
Total	-	28	3	1	112

2013 MSFR Total Sales Units

	0-2 BR	3 BR	4 BR	5+ BR	ALL BR
C	1	5	-	-	6
E	-	-	-	-	-
N	-	-	-	-	-
NE	-	-	-	-	-
NW	26	75	22	2	125
S	1	47	16	1	65
SE	4	37	19	1	61
SW	52	72	16	3	143
W	8	23	2	-	33
XNE	-	-	-	-	-
XNW	5	53	25	3	86
XS	3	32	8	2	45
XSW	15	46	19	1	81
XW	14	42	20	1	77
Total	129	432	147	14	722

Please note: The data contained in this report is dynamic in nature and therefore subject to change and adjust with the passage of time. These figures and charts are an approximation of the flow of business as observed through the Tucson Association of REALTORS® Multiple Listing Service. This report does not represent all real estate activity in the area as it does not include unrepresented sales, commercial sales or a substantial portion of new home sales. Though the data and materials presented here are deemed to be substantially correct, neither the Tucson Association of REALTORS® nor the MLS guarantees nor is in any way responsible for its accuracy.

2013 All Residential Total Unit Sales by Price and Area

	C	E	N	NE	NW	S	SE	SW	W	XNE	XNW	XS	XSW	XW	ALL Areas
29,999 or under	27	20	-	15	16	45	5	31	22	-	12	2	26	2	223
30,000 - 39,999	35	14	-	13	21	70	15	42	34	-	19	3	38	14	318
40,000 - 49,999	63	22	1	8	22	80	20	50	40	-	19	7	21	21	374
50,000 - 59,999	88	24	3	22	30	68	18	46	39	-	11	4	19	7	379
60,000 - 69,999	94	27	13	10	29	82	37	60	50	-	9	13	17	12	453
70,000 - 79,999	101	59	17	2	25	62	57	55	25	-	13	22	21	7	466
80,000 - 89,999	142	48	13	4	45	80	48	62	44	-	19	22	35	4	566
90,000 - 99,999	101	59	13	5	49	97	64	58	37	-	11	30	31	5	560
100,000 - 119,999	214	178	56	20	154	160	147	140	56	-	29	92	56	13	1,315
120,000 - 139,999	218	179	54	27	299	136	218	129	69	-	19	122	66	6	1,542
140,000 - 159,999	169	155	69	49	387	49	191	111	75	-	16	150	45	2	1,468
160,000 - 179,999	131	129	36	42	485	28	146	63	50	2	17	140	40	3	1,312
180,000 - 199,999	107	69	44	52	361	35	93	30	30	-	6	115	21	2	965
200,000 - 249,999	126	78	122	157	725	16	183	35	67	1	15	197	30	-	1,752
250,000 - 299,999	87	34	166	81	440	4	81	12	29	2	2	87	28	-	1,053
300,000 - 399,999	78	22	260	81	396	1	59	3	71	1	1	62	16	1	1,052
400,000 - 499,999	29	7	183	50	141	-	15	1	26	1	-	15	1	-	469
500,000 - 749,999	15	5	172	43	110	-	13	-	11	1	-	6	3	-	379
750,000 - 999,999	6	-	71	9	24	-	-	-	1	1	-	-	-	-	112
1,000,000 +	1	-	33	5	22	-	-	-	-	-	-	-	-	-	61
ALL Price Ranges	1,832	1,129	1,326	695	3,781	1,013	1,410	928	776	9	218	1,089	514	99	14,819

2013 SFR Total Unit Sales by Price and Area

	C	E	N	NE	NW	S	SE	SW	W	XNE	XNW	XS	XSW	XW	ALL Areas
29,999 or under	1	-	-	-	2	31	-	1	5	-	2	1	4	-	47
30,000 - 39,999	20	-	-	-	2	40	1	6	7	-	1	-	-	-	77
40,000 - 49,999	34	-	-	-	4	60	1	14	16	-	3	1	2	-	135
50,000 - 59,999	61	4	-	-	2	60	8	17	19	-	2	1	-	1	175
60,000 - 69,999	68	10	-	-	6	63	21	36	26	-	4	6	4	1	245
70,000 - 79,999	75	22	-	1	13	51	39	34	13	-	3	9	3	2	265
80,000 - 89,999	111	26	-	-	19	70	36	49	28	-	14	13	6	3	375
90,000 - 99,999	77	40	-	2	28	96	51	46	25	-	5	19	11	2	402
100,000 - 119,999	170	138	1	6	119	158	142	119	45	-	23	68	27	3	1,019
120,000 - 139,999	164	156	5	9	262	136	212	119	66	-	18	106	33	3	1,289
140,000 - 159,999	147	146	8	32	340	49	188	104	73	-	16	145	29	-	1,277
160,000 - 179,999	120	126	11	32	436	26	145	61	50	2	16	137	34	2	1,198
180,000 - 199,999	100	69	13	45	329	33	93	29	30	-	6	114	15	2	878
200,000 - 249,999	124	78	64	145	662	16	183	35	66	1	15	196	24	-	1,609
250,000 - 299,999	82	34	124	78	426	4	81	12	29	2	2	87	25	-	986
300,000 - 399,999	75	22	222	81	387	1	59	3	71	1	1	62	15	1	1,001
400,000 - 499,999	28	7	161	50	139	-	15	1	26	1	-	15	1	-	444
500,000 - 749,999	15	5	166	43	110	-	13	-	11	1	-	6	3	-	373
750,000 - 999,999	6	-	71	9	24	-	-	-	1	1	-	-	-	-	112
1,000,000 +	1	-	33	5	22	-	-	-	-	-	-	-	-	-	61
ALL Price Ranges	1,479	883	879	538	3,332	894	1,288	686	607	9	131	986	236	20	11,968

Please note: The data contained in this report is dynamic in nature and therefore subject to change and adjust with the passage of time. These figures and charts are an approximation of the flow of business as observed through the Tucson Association of REALTORS® Multiple Listing Service. This report does not represent all real estate activity in the area as it does not include unrepresented sales, commercial sales or a substantial portion of new home sales. Though the data and materials presented here are deemed to be substantially correct, neither the Tucson Association of REALTORS® nor the MLS guarantees nor is in any way responsible for its accuracy.

2013 TH Total Unit Sales by Price and Area

	C	E	N	NE	NW	S	SE	SW	W	XNE	XNW	XS	XSW	XW	ALL Areas
29,999 or under	1	1	-	-	-	7	3	-	2	-	-	-	-	-	14
30,000 - 39,999	4	1	-	1	-	13	5	1	3	-	-	-	2	-	30
40,000 - 49,999	8	5	-	2	-	8	5	1	9	-	-	-	-	-	38
50,000 - 59,999	9	6	-	9	1	1	5	3	12	-	-	1	4	-	51
60,000 - 69,999	12	9	1	4	2	8	9	2	13	-	-	4	7	-	71
70,000 - 79,999	11	24	-	-	1	6	12	4	10	-	-	5	13	-	86
80,000 - 89,999	18	14	2	2	5	6	5	1	11	-	-	3	24	-	91
90,000 - 99,999	14	18	1	3	7	-	8	4	8	-	-	7	18	-	88
100,000 - 119,999	31	38	7	14	20	-	4	3	9	-	-	18	26	-	170
120,000 - 139,999	38	22	14	18	28	-	3	1	3	-	-	10	33	-	170
140,000 - 159,999	19	8	18	17	34	-	1	-	2	-	-	2	16	-	117
160,000 - 179,999	7	3	20	9	41	2	-	-	-	-	-	3	4	-	89
180,000 - 199,999	4	-	21	7	25	2	-	-	-	-	-	1	6	-	66
200,000 - 249,999	2	-	53	12	58	-	-	-	1	-	-	1	6	-	133
250,000 - 299,999	4	-	38	3	14	-	-	-	-	-	-	-	3	-	62
300,000 - 399,999	2	-	38	-	9	-	-	-	-	-	-	-	1	-	50
400,000 - 499,999	1	-	22	-	2	-	-	-	-	-	-	-	-	-	25
500,000 - 749,999	-	-	6	-	-	-	-	-	-	-	-	-	-	-	6
750,000 - 999,999	-	-	-	-	-	-	-	-	-	-	-	-	-	-	-
1,000,000 +	-	-	-	-	-	-	-	-	-	-	-	-	-	-	-
ALL Price Ranges	185	149	241	101	247	53	60	20	83	-	-	55	163	-	1,357

2013 CND Total Unit Sales by Price and Area

	C	E	N	NE	NW	S	SE	SW	W	XNE	XNW	XS	XSW	XW	ALL Areas
29,999 or under	24	19	-	15	4	-	-	-	7	-	-	-	1	-	70
30,000 - 39,999	9	13	-	12	6	-	-	4	12	-	-	-	13	-	69
40,000 - 49,999	19	17	1	6	3	-	-	-	10	-	-	-	9	-	65
50,000 - 59,999	17	14	3	13	5	-	-	-	2	-	-	1	3	-	58
60,000 - 69,999	13	8	12	6	4	-	-	-	7	-	-	-	3	-	53
70,000 - 79,999	14	13	17	1	3	-	-	-	2	-	-	-	-	-	50
80,000 - 89,999	13	8	11	2	2	-	-	1	2	-	-	1	-	-	40
90,000 - 99,999	10	1	12	-	2	-	-	-	3	-	-	-	-	-	28
100,000 - 119,999	13	2	48	-	3	-	-	-	2	-	-	-	1	-	69
120,000 - 139,999	16	1	35	-	2	-	-	-	-	-	-	-	-	-	54
140,000 - 159,999	3	1	43	-	7	-	-	-	-	-	-	-	-	-	54
160,000 - 179,999	4	-	5	1	6	-	-	-	-	-	-	-	-	-	16
180,000 - 199,999	3	-	10	-	5	-	-	-	-	-	-	-	-	-	18
200,000 - 249,999	-	-	5	-	5	-	-	-	-	-	-	-	-	-	10
250,000 - 299,999	1	-	4	-	-	-	-	-	-	-	-	-	-	-	5
300,000 - 399,999	1	-	-	-	-	-	-	-	-	-	-	-	-	-	1
400,000 - 499,999	-	-	-	-	-	-	-	-	-	-	-	-	-	-	-
500,000 - 749,999	-	-	-	-	-	-	-	-	-	-	-	-	-	-	-
750,000 - 999,999	-	-	-	-	-	-	-	-	-	-	-	-	-	-	-
1,000,000 +	-	-	-	-	-	-	-	-	-	-	-	-	-	-	-
ALL Price Ranges	160	97	206	56	57	-	-	5	47	-	-	2	30	-	660

Please note: The data contained in this report is dynamic in nature and therefore subject to change and adjust with the passage of time. These figures and charts are an approximation of the flow of business as observed through the Tucson Association of REALTORS® Multiple Listing Service. This report does not represent all real estate activity in the area as it does not include unrepresented sales, commercial sales or a substantial portion of new home sales. Though the data and materials presented here are deemed to be substantially correct, neither the Tucson Association of REALTORS® nor the MLS guarantees nor is in any way responsible for its accuracy.

2013 MH Total Unit Sales by Price and Area

	C	E	N	NE	NW	S	SE	SW	W	XNE	XNW	XS	XSW	XW	ALL Areas
29,999 or under	-	-	-	-	3	1	-	11	5	-	1	1	1	-	23
30,000 - 39,999	-	-	-	-	4	-	1	13	1	-	-	-	1	-	20
40,000 - 49,999	2	-	-	-	2	-	-	15	-	-	-	-	1	2	22
50,000 - 59,999	-	-	-	-	5	-	-	6	-	-	-	-	1	-	12
60,000 - 69,999	-	-	-	-	1	-	-	7	-	-	-	-	-	-	8
70,000 - 79,999	-	-	-	-	1	-	-	11	-	-	-	-	-	-	12
80,000 - 89,999	-	-	-	-	2	-	-	3	-	-	-	-	-	-	5
90,000 - 99,999	-	-	-	-	-	-	-	-	-	-	-	-	-	-	-
100,000 - 119,999	-	-	-	-	2	-	-	5	-	-	-	-	-	-	7
120,000 - 139,999	-	-	-	-	-	-	-	2	-	-	-	-	-	-	2
140,000 - 159,999	-	-	-	-	-	-	-	1	-	-	-	-	-	-	1
160,000 - 179,999	-	-	-	-	-	-	-	-	-	-	-	-	-	-	-
180,000 - 199,999	-	-	-	-	-	-	-	-	-	-	-	-	-	-	-
200,000 - 249,999	-	-	-	-	-	-	-	-	-	-	-	-	-	-	-
250,000 - 299,999	-	-	-	-	-	-	-	-	-	-	-	-	-	-	-
300,000 - 399,999	-	-	-	-	-	-	-	-	-	-	-	-	-	-	-
400,000 - 499,999	-	-	-	-	-	-	-	-	-	-	-	-	-	-	-
500,000 - 749,999	-	-	-	-	-	-	-	-	-	-	-	-	-	-	-
750,000 - 999,999	-	-	-	-	-	-	-	-	-	-	-	-	-	-	-
1,000,000 +	-	-	-	-	-	-	-	-	-	-	-	-	-	-	-
ALL Price Ranges	2	-	-	-	20	1	1	74	6	-	1	1	4	2	112

2013 MSFR Total Unit Sales by Price and Area

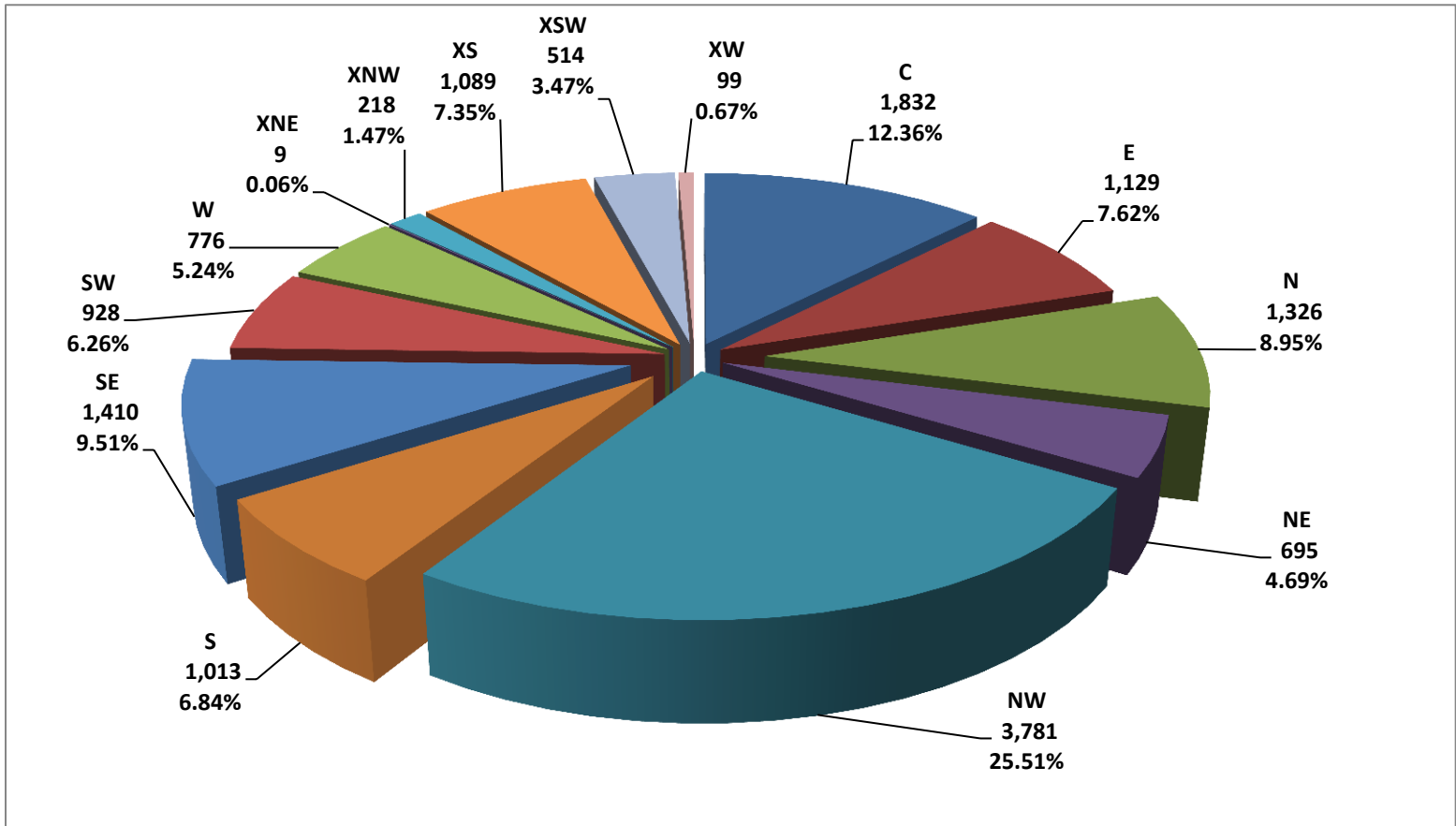
	C	E	N	NE	NW	S	SE	SW	W	XNE	XNW	XS	XSW	XW	ALL Areas
29,999 or under	1	-	-	-	7	6	2	19	3	-	9	-	20	2	69
30,000 - 39,999	2	-	-	-	9	17	8	18	11	-	18	3	22	14	122
40,000 - 49,999	-	-	-	-	13	12	14	20	5	-	16	6	9	19	114
50,000 - 59,999	1	-	-	-	17	7	5	20	6	-	9	1	11	6	83
60,000 - 69,999	1	-	-	-	16	11	7	15	4	-	5	3	3	11	76
70,000 - 79,999	1	-	-	-	7	5	6	6	-	-	10	8	5	5	53
80,000 - 89,999	-	-	-	-	17	4	7	8	3	-	5	5	5	1	55
90,000 - 99,999	-	-	-	-	12	1	5	8	1	-	6	4	2	3	42
100,000 - 119,999	-	-	-	-	10	2	1	13	-	-	6	6	2	10	50
120,000 - 139,999	-	-	-	-	7	-	3	7	-	-	1	6	-	3	27
140,000 - 159,999	-	-	-	-	6	-	2	6	-	-	-	3	-	2	19
160,000 - 179,999	-	-	-	-	2	-	1	2	-	-	1	-	2	1	9
180,000 - 199,999	-	-	-	-	2	-	-	1	-	-	-	-	-	-	3
200,000 - 249,999	-	-	-	-	-	-	-	-	-	-	-	-	-	-	-
250,000 - 299,999	-	-	-	-	-	-	-	-	-	-	-	-	-	-	-
300,000 - 399,999	-	-	-	-	-	-	-	-	-	-	-	-	-	-	-
400,000 - 499,999	-	-	-	-	-	-	-	-	-	-	-	-	-	-	-
500,000 - 749,999	-	-	-	-	-	-	-	-	-	-	-	-	-	-	-
750,000 - 999,999	-	-	-	-	-	-	-	-	-	-	-	-	-	-	-
1,000,000 +	-	-	-	-	-	-	-	-	-	-	-	-	-	-	-
ALL Price Ranges	6	-	-	-	125	65	61	143	33	-	86	45	81	77	722

Please note: The data contained in this report is dynamic in nature and therefore subject to change and adjust with the passage of time. These figures and charts are an approximation of the flow of business as observed through the Tucson Association of REALTORS® Multiple Listing Service. This report does not represent all real estate activity in the area as it does not include unrepresented sales, commercial sales or a substantial portion of new home sales. Though the data and materials presented here are deemed to be substantially correct, neither the Tucson Association of REALTORS® nor the MLS guarantees nor is in any way responsible for its accuracy.

2013 All RESIDENTIAL – Total Unit Sales by Type

	SFR	TH	CND	MH	MSFR	Totals
Jan	780	90	36	8	41	955
Feb	833	101	49	9	61	1,053
Mar	1,111	144	69	13	60	1,397
Apr	1,132	129	65	14	70	1,410
May	1,242	142	78	11	75	1,548
Jun	1,217	129	58	16	50	1,470
Jul	1,102	115	58	6	54	1,335
Aug	1,061	131	53	6	63	1,314
Sep	894	99	47	1	63	1,104
Oct	951	91	54	9	74	1,179
Nov	774	91	38	9	52	964
Dec	871	95	55	10	59	1,090

2013 RESIDENTIAL Total Sales Units by Area



Please note: The data contained in this report is dynamic in nature and therefore subject to change and adjust with the passage of time. These figures and charts are an approximation of the flow of business as observed through the Tucson Association of REALTORS® Multiple Listing Service. This report does not represent all real estate activity in the area as it does not include unrepresented sales, commercial sales or a substantial portion of new home sales. Though the data and materials presented here are deemed to be substantially correct, neither the Tucson Association of REALTORS® nor the MLS guarantees nor is in any way responsible for its accuracy.

YEAR END 2013 RESIDENTIAL SALES STATISTICS

All RESIDENTIAL – Avg. Sale Price

	0-2 BR	3 BR	4 BR	5+ BR	ALL BR
C	105,801	155,780	201,665	324,705	148,189
E	79,041	138,992	178,238	210,460	141,036
N	200,592	357,707	500,601	685,411	373,323
NE	107,565	240,078	343,767	419,319	148,189
NW	199,819	208,540	277,466	339,594	231,911
S	65,592	90,326	119,454	130,718	93,710
SE	130,846	147,605	186,039	260,836	163,865
SW	68,624	108,418	137,641	177,548	110,598
W	84,356	160,384	231,453	368,293	159,813
XNE	239,833	474,500	799,000	-	354,111
XNW	91,950	92,849	116,204	158,853	104,581
XS	149,822	175,673	202,275	236,459	184,010
XSW	126,943	130,895	142,188	95,666	129,238
XW	68,113	73,280	96,737	45,000	78,059
Total	138,388	174,722	245,227	342,375	191,399

All TH – Avg. Sale Price

	0-2 BR	3 BR	4 BR	5+ BR	ALL BR
C	102,814	134,916	201,250	-	114,116
E	95,398	99,965	-	153,050	98,072
N	243,576	272,755	345,000	-	255,557
NE	116,449	170,290	262,000	-	138,364
NW	172,501	197,743	332,000	-	178,902
S	61,525	61,260	30,899	-	60,319
SE	65,359	78,133	-	-	72,811
SW	79,825	81,500	-	-	79,993
W	74,280	80,223	-	-	76,643
XNE	-	-	-	-	-
XNW	-	-	-	-	-
XS	107,984	125,375	96,000	-	108,813
XSW	115,188	168,112	-	-	117,786
XW	-	-	-	-	-
Total	136,607	161,758	215,099	153,050	144,574

All MH – Avg. Sale Price

	0-2 BR	3 BR	4 BR	5+ BR	ALL BR
C	44,900	40,000	-	-	42,450
E	-	-	-	-	-
N	-	-	-	-	-
NE	-	-	-	-	-
NW	56,823	48,800	27,000	85,000	54,735
S	-	24,000	-	-	24,000
SE	-	34,900	-	-	34,900
SW	54,714	64,186	32,300	-	56,331
W	27,300	24,000	-	-	26,750
XNE	-	-	-	-	-
XNW	-	20,001	-	-	20,001
XS	27,000	-	-	-	27,000
XSW	-	36,800	31,500	-	35,475
XW	43,250	-	-	-	27,000
Total	52,588	52,146	30,266	85,000	52,169

All SFR– Avg. Sale Price

	0-2 BR	3 BR	4 BR	5+ BR	ALL BR
C	119,819	158,734	201,669	324,705	160,730
E	119,328	145,015	178,639	216,073	157,959
N	331,796	395,454	501,442	685,411	464,204
NE	230,227	253,282	344,958	419,319	305,033
NW	226,697	216,084	281,878	343,070	244,809
S	66,729	94,768	124,797	132,254	98,794
SE	157,940	155,233	191,103	264,436	172,784
SW	80,450	119,282	142,610	189,957	126,873
W	116,904	176,239	233,432	368,293	186,948
XNE	239,833	474,500	799,000	-	354,111
XNW	112,635	125,487	141,496	195,486	135,380
XS	165,365	183,440	205,499	239,047	193,031
XSW	168,675	183,456	204,227	105,000	177,364
XW	126,090	108,113	157,207	-	127,335
Total	169,181	184,789	252,857	349,290	211,571

All CND– Avg. Sale Price

	0-2 BR	3 BR	4 BR	5+ BR	ALL BR
C	75,241	98,609	-	-	76,847
E	48,328	76,808	65,500	112,000	52,978
N	118,657	152,865	-	-	123,307
NE	42,045	67,150	-	-	44,735
NW	94,695	165,066	66,900	-	109,022
S	-	-	-	-	-
SE	-	-	-	-	-
SW	48,700	35,625	-	-	43,470
W	47,288	78,800	-	-	50,640
XNE	-	-	-	-	-
XNW	-	-	-	-	-
XS	67,500	-	-	-	67,500
XSW	43,969	-	-	-	43,969
XW	-	-	-	-	-
Total	79,569	119,641	66,200	112,000	84,253

All MSFR – Avg. Sale Price

	0-2 BR	3 BR	4 BR	5+ BR	ALL BR
C	30,000	48,106	-	-	45,088
E	-	-	-	-	-
N	-	-	-	-	-
NE	-	-	-	-	-
NW	66,940	73,806	97,133	121,000	77,239
S	80,000	48,781	57,056	100,000	52,087
SE	52,458	67,933	70,644	34,000	67,207
SW	68,220	65,930	69,384	70,000	67,235
W	43,983	48,142	87,950	-	49,546
XNE	-	-	-	-	-
XNW	50,580	57,891	61,573	61,166	58,651
XS	48,233	86,335	97,458	112,250	86,924
XSW	63,811	39,150	56,589	77,000	48,275
XW	50,959	65,816	78,596	45,000	66,164
Total	62,231	62,113	72,410	79,714	64,571

Please note: The data contained in this report is dynamic in nature and therefore subject to change and adjust with the passage of time. These figures and charts are an approximation of the flow of business as observed through the Tucson Association of REALTORS® Multiple Listing Service. This report does not represent all real estate activity in the area as it does not include unrepresented sales, commercial sales or a substantial portion of new home sales. Though the data and materials presented here are deemed to be substantially correct, neither the Tucson Association of REALTORS® nor the MLS guarantees nor is in any way responsible for its accuracy.

YEAR END 2013 RESIDENTIAL SALES STATISTICS

All RESIDENTIAL – Avg. List Price

	0-2 BR	3 BR	4 BR	5+ BR	ALL BR
C	110,179	160,245	209,849	347,133	153,519
E	81,860	142,227	183,127	219,551	144,824
N	207,840	372,622	522,206	718,326	389,052
NE	110,778	247,791	356,492	433,461	268,699
NW	207,022	214,657	286,718	352,114	239,447
S	68,087	91,052	120,381	135,091	94,866
SE	133,845	150,415	189,855	267,243	167,174
SW	73,267	110,575	139,673	182,344	113,309
W	87,830	164,429	237,816	391,137	164,546
XNE	262,316	504,500	799,000	-	375,766
XNW	97,925	94,128	118,306	162,352	106,594
XS	157,220	180,177	205,921	240,158	-
XSW	135,015	136,925	148,116	97,166	136,526
XW	73,345	77,990	102,961	48,600	83,266
Total	144,067	179,656	252,964	355,703	197,584

All TH– Avg. List Price

	0-2 BR	3 BR	4 BR	5+ BR	ALL BR
C	106,911	137,277	216,950	-	117,785
E	98,214	103,340	-	141,825	100,932
N	251,908	283,000	352,500	-	264,612
NE	120,227	174,863	269,666	-	142,517
NW	180,206	204,912	357,450	-	186,643
S	64,209	60,990	29,750	-	62,301
SE	67,125	78,732	-	-	73,896
SW	81,917	85,500	-	-	82,276
W	77,406	80,563	-	-	78,661
XNE	-	-	-	-	-
XNW	-	-	-	-	-
XS	114,901	129,725	99,200	-	115,408
XSW	121,720	169,268	-	-	124,053
XW	-	-	-	-	-
Total	142,288	166,563	224,669	141,825	150,018

All MH – Avg. List Price

	0-2 BR	3 BR	4 BR	5+ BR	ALL BR
C	44,900	44,000	-	-	44,450
E	-	-	-	-	-
N	-	-	-	-	-
NE	-	-	-	-	-
NW	64,203	55,160	30,000	89,900	61,517
S	-	24,900	-	-	24,900
SE	-	34,900	-	-	34,900
SW	60,387	74,153	34,900	-	62,833
W	29,180	25,000	-	-	28,483
XNE	-	-	-	-	-
XNW	-	15,900	-	-	15,900
XS	39,900	-	-	-	39,900
XSW	-	59,133	34,900	-	53,075
XW	47,450	-	-	-	47,450
Total	58,284	61,078	33,266	89,900	58,595

All SFR– Avg. List Price

	0-2 BR	3 BR	4 BR	5+ BR	ALL BR
C	124,520	163,345	209,785	347,133	166,431
E	122,583	148,268	183,539	224,948	161,978
N	346,853	412,085	523,123	718,326	484,460
NE	234,663	261,534	357,756	433,461	315,494
NW	234,067	222,239	291,213	355,628	252,488
S	69,043	95,395	125,606	136,596	99,801
SE	161,698	158,239	195,107	270,926	176,338
SW	83,012	120,818	144,738	194,965	128,835
W	120,565	180,737	239,894	391,137	192,286
XNE	262,316	504,500	799,000	-	375,766
XNW	118,658	125,835	143,807	199,622	137,202
XS	172,947	187,847	209,203	242,719	197,681
XSW	179,841	191,089	212,776	106,250	186,938
XW	133,159	111,982	170,316	-	134,776
Total	175,619	189,816	260,826	362,829	218,129

All CND– Avg. List Price

	0-2 BR	3 BR	4 BR	5+ BR	ALL BR
C	79,108	103,845	-	-	80,809
E	51,003	78,607	67,500	169,900	56,098
N	122,245	161,117	-	-	127,529
NE	43,983	69,383	-	-	46,705
NW	98,934	176,250	66,900	-	114,649
S	-	-	-	-	-
SE	-	-	-	-	-
SW	50,000	35,950	-	-	44,380
W	51,020	86,300	-	-	54,773
XNE	-	-	-	-	-
XNW	-	-	-	-	-
XS	71,200	-	-	-	71,200
XSW	47,896	-	-	-	47,896
XW	-	-	-	-	-
Total	83,023	126,106	67,200	169,900	88,133

All MSFR – Avg. List Price

	0-2 BR	3 BR	4 BR	5+ BR	ALL BR
C	33,000	50,880	-	-	47,900
E	-	-	-	-	-
N	-	-	-	-	-
NE	-	-	-	-	-
NW	71,646	77,605	101,941	133,500	81,543
S	99,000	50,806	59,875	105,000	54,614
SE	49,495	69,099	70,172	35,200	67,592
SW	75,113	69,576	69,915	72,966	71,699
W	47,350	49,700	87,200	-	51,403
XNE	-	-	-	-	-
XNW	56,460	60,307	63,224	62,966	61,024
XS	53,730	92,050	98,850	117,250	91,824
XSW	70,093	42,174	58,786	79,000	51,696
XW	55,682	70,706	82,755	48,600	70,817
Total	67,844	65,332	74,629	84,078	68,037

Please note: The data contained in this report is dynamic in nature and therefore subject to change and adjust with the passage of time. These figures and charts are an approximation of the flow of business as observed through the Tucson Association of REALTORS® Multiple Listing Service. This report does not represent all real estate activity in the area as it does not include unrepresented sales, commercial sales or a substantial portion of new home sales. Though the data and materials presented here are deemed to be substantially correct, neither the Tucson Association of REALTORS® nor the MLS guarantees nor is in any way responsible for its accuracy.

YEAR END 2013 RESIDENTIAL SALES STATISTICS

All RESIDENTIAL – Avg. DOM

	0-2 BR	3 BR	4 BR	5+ BR	ALL BR
C	51	44	52	42	47
E	52	43	46	65	46
N	50	60	59	65	57
NE	45	53	56	75	54
NW	79	51	55	57	58
S	41	28	32	44	31
SE	65	40	42	50	43
SW	100	42	39	47	53
W	51	42	53	86	47
XNE	50	135	1	-	64
XNW	60	64	53	81	61
XS	106	58	57	54	67
XSW	115	76	61	81	99
XW	53	62	40	39	54
Total	70	47	50	58	54

All TH – Avg. DOM

	0-2 BR	3 BR	4 BR	5+ BR	ALL BR
C	45	40	133	-	44
E	51	58	-	54	54
N	56	59	6	-	57
NE	43	51	82	-	47
NW	77	67	47	-	75
S	36	33	15	-	34
SE	35	45	-	-	41
SW	54	22	-	-	50
W	41	29	-	-	36
XNE	-	-	-	-	-
XNW	-	-	-	-	-
XS	122	58	138	-	118
XSW	119	87	-	-	117
XW	-	-	-	-	-
Total	69	52	71	54	64

All MH – Avg. DOM

	0-2 BR	3 BR	4 BR	5+ BR	ALL BR
C	6	8	-	-	7
E	-	-	-	-	-
N	-	-	-	-	-
NE	-	-	-	-	-
NW	75	61	167	46	74
S	-	68	-	-	68
SE	-	41	-	-	41
SW	138	118	95	-	134
W	27	7	-	-	24
XNE	-	-	-	-	-
XNW	-	37	-	-	37
XS	63	-	-	-	63
XSW	-	123	64	-	108
XW	17	-	-	-	17
Total	115	93	108	46	109

All SFR – Avg. DOM

	0-2 BR	3 BR	4 BR	5+ BR	ALL BR
C	43	44	51	42	44
E	48	40	46	66	43
N	50	60	59	65	59
NE	34	54	55	75	56
NW	80	49	55	57	56
S	43	27	31	45	31
SE	76	40	42	51	43
SW	55	33	36	44	36
W	44	42	52	86	46
XNE	50	135	1	-	64
XNW	65	56	59	73	59
XS	101	56	58	54	64
XSW	110	80	62	77	94
XW	24	50	61	-	47
Total	68	45	50	58	50

All CND – Avg. DOM

	0-2 BR	3 BR	4 BR	5+ BR	ALL BR
C	75	47	-	-	73
E	54	103	61	33	61
N	45	73	-	-	49
NE	53	54	-	-	53
NW	77	97	35	-	81
S	-	-	-	-	-
SE	-	-	-	-	-
SW	61	11	-	-	41
W	74	177	-	-	85
XNE	-	-	-	-	-
XNW	-	-	-	-	-
XS	74	-	-	-	74
XSW	122	-	-	-	122
XW	-	-	-	-	-
Total	63	82	48	33	65

All MSFR – Avg. DOM

	0-2 BR	3 BR	4 BR	5+ BR	ALL BR
C	49	104	-	-	95
E	-	-	-	-	-
N	-	-	-	-	-
NE	-	-	-	-	-
NW	79	70	64	56	71
S	15	34	46	25	36
SE	51	50	43	28	47
SW	124	69	77	77	90
W	83	39	101	-	53
XNE	-	-	-	-	-
XNW	49	74	40	102	63
XS	147	78	16	51	70
XSW	102	63	59	88	69
XW	69	65	33	39	57
Total	98	63	50	66	66

Please note: The data contained in this report is dynamic in nature and therefore subject to change and adjust with the passage of time. These figures and charts are an approximation of the flow of business as observed through the Tucson Association of REALTORS® Multiple Listing Service. This report does not represent all real estate activity in the area as it does not include unrepresented sales, commercial sales or a substantial portion of new home sales. Though the data and materials presented here are deemed to be substantially correct, neither the Tucson Association of REALTORS® nor the MLS guarantees nor is in any way responsible for its accuracy.

2013 Residential Avg. DOM by Price and Area

	C	E	N	NE	NW	S	SE	SW	W	XNE	XNW	XS	XSW	XW	ALL Areas
29,999 or under	154	64	-	65	103	35	36	99	33	-	53	67	68	44	73
30,000 - 39,999	53	51	-	37	67	40	30	79	43	-	69	74	84	85	58
40,000 - 49,999	41	91	35	54	77	40	29	83	61	-	57	79	96	46	58
50,000 - 59,999	38	45	62	38	53	37	41	50	51	-	124	44	96	101	49
60,000 - 69,999	47	46	56	47	91	36	44	71	58	-	32	117	82	52	55
70,000 - 79,999	57	44	40	31	24	33	32	53	32	64	43	80	124	20	48
80,000 - 89,999	42	46	51	63	58	31	42	39	36	-	54	76	106	65	48
90,000 - 99,999	54	52	58	51	45	25	38	40	41	-	61	97	164	100	53
100,000 - 119,999	44	49	38	50	39	20	34	38	31	-	44	72	90	23	42
120,000 - 139,999	44	53	47	52	32	22	31	39	25	-	25	46	99	38	40
140,000 - 159,999	36	37	74	47	36	31	39	52	41	-	50	44	98	70	43
160,000 - 179,999	44	37	39	44	49	52	39	53	43	30	74	50	124	10	48
180,000 - 199,999	43	41	35	45	56	41	52	48	44	-	117	65	118	13	53
200,000 - 249,999	48	37	55	47	69	65	58	53	57	31	86	83	77	-	63
250,000 - 299,999	52	36	59	69	72	14	57	129	56	100	191	88	73	-	67
300,000 - 399,999	44	46	58	48	69	149	56	21	72	11	88	84	84	154	63
400,000 - 499,999	53	119	55	71	81	-	88	17	74	78	-	38	14	-	67
500,000 - 749,999	68	125	56	68	72	-	81	-	67	193	-	222	97	-	68
750,000 - 999,999	94	-	84	143	64	-	-	-	15	1	-	-	-	-	84
1,000,000 +	7	-	88	62	145	-	-	-	-	-	-	-	-	-	105
ALL Price Ranges	47	46	57	54	58	31	43	53	47	64	61	67	99	54	54

2013 SFR Avg. DOM by Price and Area

	C	E	N	NE	NW	S	SE	SW	W	XNE	XNW	XS	XSW	XW	ALL Areas
29,999 or under	28	-	-	-	134	34	-	0	45	-	97	71	45	-	43
30,000 - 39,999	38	-	-	-	47	41	0	99	39	-	112	-	-	-	45
40,000 - 49,999	43	-	-	-	62	40	118	29	41	-	134	194	169	-	46
50,000 - 59,999	31	67	-	-	61	38	47	32	48	-	148	19	-	13	38
60,000 - 69,999	40	32	-	-	121	40	30	26	37	-	38	107	59	117	41
70,000 - 79,999	54	30	-	4	17	33	21	30	36	64	52	53	191	4	38
80,000 - 89,999	44	49	-	-	37	32	42	34	28	-	42	76	58	79	41
90,000 - 99,999	44	53	-	68	46	24	43	25	35	-	46	85	115	54	41
100,000 - 119,999	44	46	6	35	32	20	34	26	34	-	27	56	86	39	37
120,000 - 139,999	45	51	25	34	29	22	29	28	26	-	25	40	97	46	35
140,000 - 159,999	34	37	66	50	32	31	38	41	38	-	50	43	97	-	39
160,000 - 179,999	45	35	51	48	44	46	39	54	43	30	78	50	126	14	46
180,000 - 199,999	45	41	35	47	52	40	52	46	44	-	117	64	108	13	52
200,000 - 249,999	48	37	50	49	66	65	58	53	57	31	86	83	70	-	62
250,000 - 299,999	52	36	64	64	72	14	57	129	56	100	191	88	70	-	68
300,000 - 399,999	46	46	55	48	70	149	56	21	72	11	88	84	88	154	63
400,000 - 499,999	54	119	55	71	82	-	88	17	74	78	-	38	14	-	68
500,000 - 749,999	68	125	56	68	72	-	81	-	67	193	-	222	97	-	68
750,000 - 999,999	94	-	84	143	64	-	-	-	15	1	-	-	-	-	84
1,000,000 +	7	-	88	62	145	-	-	-	-	-	-	-	-	-	105
ALL Price Ranges	44	43	59	56	56	31	43	36	46	64	59	64	94	47	50

Please note: The data contained in this report is dynamic in nature and therefore subject to change and adjust with the passage of time. These figures and charts are an approximation of the flow of business as observed through the Tucson Association of REALTORS® Multiple Listing Service. This report does not represent all real estate activity in the area as it does not include unrepresented sales, commercial sales or a substantial portion of new home sales. Though the data and materials presented here are deemed to be substantially correct, neither the Tucson Association of REALTORS® nor the MLS guarantees nor is in any way responsible for its accuracy.

2013 TH Avg. DOM by Price and Area

	C	E	N	NE	NW	S	SE	SW	W	XNE	XNW	XS	XSW	XW	ALL Areas
29,999 or under	274	64	-	-	-	47	6	-	2	-	-	-	-	-	49
30,000 - 39,999	77	154	-	9	-	32	27	61	48	-	-	-	71	-	46
40,000 - 49,999	40	55	-	54	-	47	15	2	31	-	-	-	-	-	38
50,000 - 59,999	36	54	-	24	22	29	66	15	41	-	-	30	101	-	44
60,000 - 69,999	59	58	16	17	162	13	43	24	36	-	-	94	82	-	51
70,000 - 79,999	57	43	-	-	51	16	31	6	22	-	-	104	124	-	53
80,000 - 89,999	39	42	59	68	66	15	39	7	41	-	-	112	121	-	64
90,000 - 99,999	80	52	89	40	51	-	21	89	44	-	-	147	211	-	95
100,000 - 119,999	34	57	82	57	56	-	48	155	22	-	-	146	93	-	68
120,000 - 139,999	38	64	75	61	41	-	190	4	13	-	-	86	101	-	64
140,000 - 159,999	47	27	67	40	40	-	10	-	177	-	-	192	99	-	57
160,000 - 179,999	24	104	35	36	88	133	-	-	-	-	-	68	128	-	68
180,000 - 199,999	5	-	33	27	107	57	-	-	-	-	-	125	144	-	71
200,000 - 249,999	38	-	65	33	106	-	-	-	6	-	-	5	107	-	81
250,000 - 299,999	29	-	44	194	77	-	-	-	-	-	-	-	101	-	60
300,000 - 399,999	17	-	75	-	29	-	-	-	-	-	-	-	23	-	63
400,000 - 499,999	11	-	50	-	22	-	-	-	-	-	-	-	-	-	46
500,000 - 749,999	-	-	42	-	-	-	-	-	-	-	-	-	-	-	42
750,000 - 999,999	-	-	-	-	-	-	-	-	-	-	-	-	-	-	-
1,000,000 +	-	-	-	-	-	-	-	-	-	-	-	-	-	-	-
ALL Price Ranges	44	54	57	47	75	34	41	50	36	-	-	118	117	-	64

2013 CND Avg. DOM by Price and Area

	C	E	N	NE	NW	S	SE	SW	W	XNE	XNW	XS	XSW	XW	ALL Areas
29,999 or under	161	64	-	65	36	-	-	-	43	-	-	-	85	-	94
30,000 - 39,999	77	43	-	40	35	-	-	11	44	-	-	-	131	-	61
40,000 - 49,999	39	101	35	54	86	-	-	-	140	-	-	-	117	-	85
50,000 - 59,999	45	34	62	47	24	-	-	-	62	-	-	34	137	-	47
60,000 - 69,999	73	52	59	67	41	-	-	-	175	-	-	-	91	-	78
70,000 - 79,999	71	71	40	59	12	-	-	-	49	-	-	-	-	-	56
80,000 - 89,999	34	42	50	57	77	-	-	162	98	-	-	115	-	-	52
90,000 - 99,999	92	56	56	-	138	-	-	-	32	-	-	-	-	-	72
100,000 - 119,999	65	55	33	-	114	-	-	-	11	-	-	-	148	-	44
120,000 - 139,999	53	10	40	-	80	-	-	-	-	-	-	-	-	-	45
140,000 - 159,999	68	65	79	-	155	-	-	-	-	-	-	-	-	-	88
160,000 - 179,999	72	-	28	-	173	-	-	-	-	-	-	-	-	-	92
180,000 - 199,999	20	-	38	-	98	-	-	-	-	-	-	-	-	-	52
200,000 - 249,999	-	-	19	-	24	-	-	-	-	-	-	-	-	-	21
250,000 - 299,999	122	-	55	-	-	-	-	-	-	-	-	-	-	-	68
300,000 - 399,999	2	-	-	-	-	-	-	-	-	-	-	-	-	-	2
400,000 - 499,999	161	64	-	65	36	-	-	-	43	-	-	-	85	-	94
500,000 - 749,999	77	43	-	40	35	-	-	11	44	-	-	-	131	-	61
750,000 - 999,999	39	101	35	54	86	-	-	-	140	-	-	-	117	-	85
1,000,000 +	45	34	62	47	24	-	-	-	62	-	-	34	137	-	47
ALL Price Ranges	73	52	59	67	41	-	-	-	175	-	-	-	91	-	78

Please note: The data contained in this report is dynamic in nature and therefore subject to change and adjust with the passage of time. These figures and charts are an approximation of the flow of business as observed through the Tucson Association of REALTORS® Multiple Listing Service. This report does not represent all real estate activity in the area as it does not include unrepresented sales, commercial sales or a substantial portion of new home sales. Though the data and materials presented here are deemed to be substantially correct, neither the Tucson Association of REALTORS® nor the MLS guarantees nor is in any way responsible for its accuracy.

2013 MH Avg. DOM by Price and Area

	C	E	N	NE	NW	S	SE	SW	W	XNE	XNW	XS	XSW	XW	ALL Areas
29,999 or under	-	-	-	-	73	68		153	28	-	37	63	217	-	105
30,000 - 39,999	-	-	-	-	104		41	133	6	-	-	-	64	-	113
40,000 - 49,999	7	-	-	-	43	-	-	143	-	-	-	-	133	17	109
50,000 - 59,999	-	-	-	-	81	-	-	84	-	-	-	-	21	-	77
60,000 - 69,999	-	-	-	-	87	-	-	151	-	-	-	-	-	-	143
70,000 - 79,999	-	-	-	-	64	-	-	146	-	-	-	-	-	-	139
80,000 - 89,999	-	-	-	-	33	-	-	73	-	-	-	-	-	-	57
90,000 - 99,999	-	-	-	-	-	-	-	-	-	-	-	-	-	-	-
100,000 - 119,999	-	-	-	-	75	-	-	105	-	-	-	-	-	-	96
120,000 - 139,999	-	-	-	-	-	-	-	122	-	-	-	-	-	-	122
140,000 - 159,999	-	-	-	-	-	-	-	192	-	-	-	-	-	-	192
160,000 - 179,999	-	-	-	-	-	-	-	-	-	-	-	-	-	-	-
180,000 - 199,999	-	-	-	-	-	-	-	-	-	-	-	-	-	-	-
200,000 - 249,999	-	-	-	-	-	-	-	-	-	-	-	-	-	-	-
250,000 - 299,999	-	-	-	-	-	-	-	-	-	-	-	-	-	-	-
300,000 - 399,999	-	-	-	-	-	-	-	-	-	-	-	-	-	-	-
400,000 - 499,999	-	-	-	-	-	-	-	-	-	-	-	-	-	-	-
500,000 - 749,999	-	-	-	-	-	-	-	-	-	-	-	-	-	-	-
750,000 - 999,999	-	-	-	-	-	-	-	-	-	-	-	-	-	-	-
1,000,000 +	-	-	-	-	-	-	-	-	-	-	-	-	-	-	-
ALL Price Ranges	7	-	-	-	74	68	41	134	24	-	37	63	108	17	109

2013 MSFR Avg. DOM by Price and Area

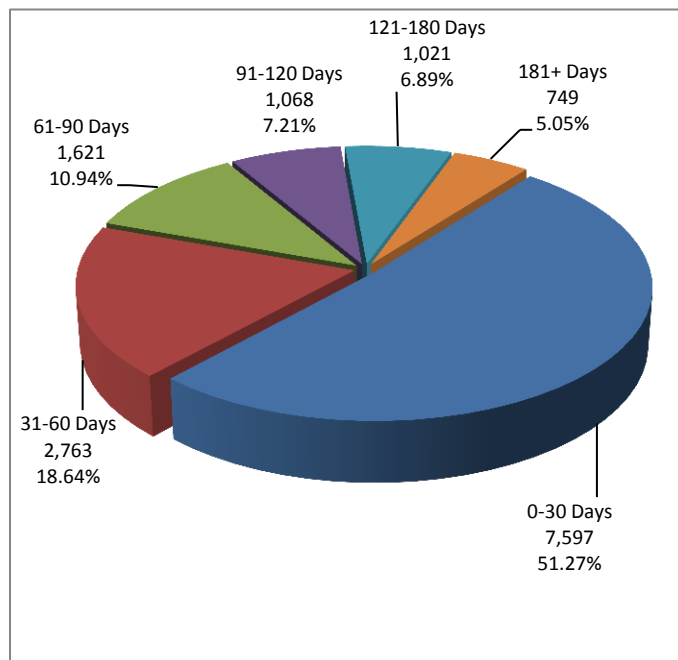
	C	E	N	NE	NW	S	SE	SW	W	XNE	XNW	XS	XSW	XW	ALL Areas
29,999 or under	6	-	-	-	144	21	82	73	20	-	45	-	64	44	66
30,000 - 39,999	56	-	-	-	78	45	34	49	46	-	66	74	59	85	58
40,000 - 49,999	-	-	-	-	85	32	28	80	23	-	42	60	56	49	53
50,000 - 59,999	358	-	-	-	55	31	7	60	79	-	119	94	90	116	73
60,000 - 69,999	50	-	-	-	84	33	84	147	62	-	27	168	105	46	82
70,000 - 79,999	45	-	-	-	33	51	99	44	-	-	40	97	85	26	59
80,000 - 89,999	-	-	-	-	79	32	46	48	51	-	87	46	92	24	63
90,000 - 99,999	-	-	-	-	23	82	17	103	199	-	74	71	14	131	62
100,000 - 119,999	-	-	-	-	53	15	64	97	-	-	109	32	76	19	61
120,000 - 139,999	-	-	-	-	73	-	60	208	-	-	17	78	-	31	101
140,000 - 159,999	-	-	-	-	116	-	81	219	-	-	-	12	-	70	124
160,000 - 179,999	-	-	-	-	45	-	42	16	-	-	12	-	82	4	38
180,000 - 199,999	-	-	-	-	27	-	-	96	-	-	-	-	-	-	50
200,000 - 249,999	-	-	-	-	-	-	-	-	-	-	-	-	-	-	-
250,000 - 299,999	-	-	-	-	-	-	-	-	-	-	-	-	-	-	-
300,000 - 399,999	-	-	-	-	-	-	-	-	-	-	-	-	-	-	-
400,000 - 499,999	-	-	-	-	-	-	-	-	-	-	-	-	-	-	-
500,000 - 749,999	-	-	-	-	-	-	-	-	-	-	-	-	-	-	-
750,000 - 999,999	-	-	-	-	-	-	-	-	-	-	-	-	-	-	-
1,000,000 +	-	-	-	-	-	-	-	-	-	-	-	-	-	-	-
ALL Price Ranges	95	-	-	-	71	36	47	90	53	-	63	70	69	57	66

Please note: The data contained in this report is dynamic in nature and therefore subject to change and adjust with the passage of time. These figures and charts are an approximation of the flow of business as observed through the Tucson Association of REALTORS® Multiple Listing Service. This report does not represent all real estate activity in the area as it does not include unrepresented sales, commercial sales or a substantial portion of new home sales. Though the data and materials presented here are deemed to be substantially correct, neither the Tucson Association of REALTORS® nor the MLS guarantees nor is in any way responsible for its accuracy.

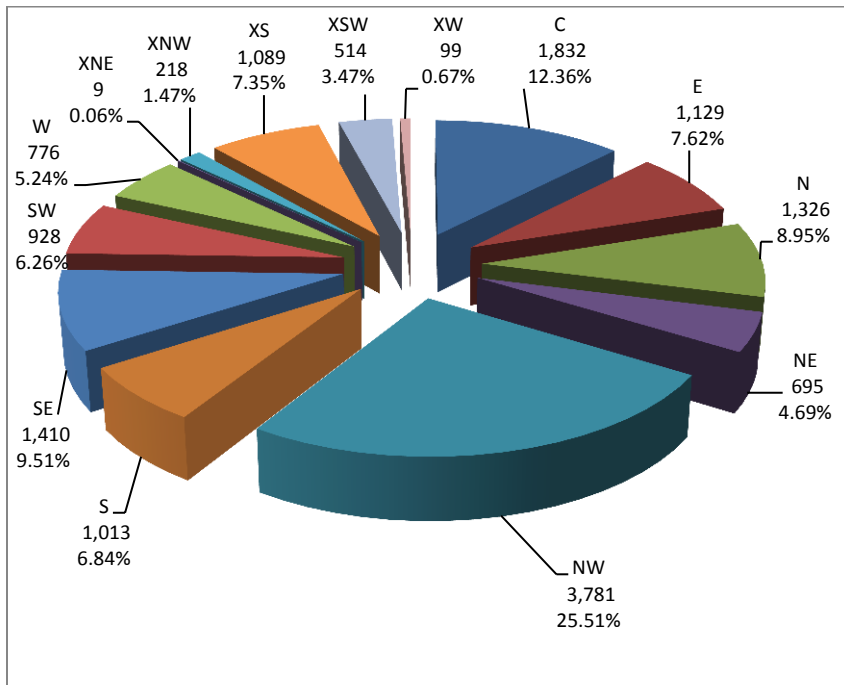
All RESIDENTIAL Avg. % - SP/LP

	SFR	TH	CND	MH	MSFR
C	96.57%	96.89%	95.1%	95.5%	94.13%
E	97.52%	97.17%	94.44%	-	-
N	95.82%	96.58%	96.69%	-	-
NE	96.68%	97.09%	95.78%	-	-
NW	96.96%	95.85%	95.09%	88.97%	94.72%
S	98.99%	96.82%	-	96.39%	95.37%
SE	97.98%	98.53%	-	100%	99.43%
SW	98.48%	97.23%	97.95%	89.65%	93.77%
W	97.22%	97.43%	92.45%	93.91%	96.39%
XNE	94.24%	-	-	-	-
XNW	98.67%	-	-	125.79%	96.11%
XS	97.65%	94.29%	94.8%	67.67%	94.66%
XSW	94.88%	94.95%	91.8%	66.84%	93.38%
XW	94.48%	-	-	91.15%	93.43%
All Areas	96.99%	96.37%	95.6%	89.03%	94.91%

All RESIDENTIAL - Days on Market



Total Listings by Area



Please note: The data contained in this report is dynamic in nature and therefore subject to change and adjust with the passage of time. These figures and charts are an approximation of the flow of business as observed through the Tucson Association of REALTORS® Multiple Listing Service. This report does not represent all real estate activity in the area as it does not include unrepresented sales, commercial sales or a substantial portion of new home sales. Though the data and materials presented here are deemed to be substantially correct, neither the Tucson Association of REALTORS® nor the MLS guarantees nor is in any way responsible for its accuracy.

YEAR END 2013 RESIDENTIAL SALES STATISTICS

All RESIDENTIAL – Total Listings

	0-2 BR	3 BR	4 BR	5+ BR	ALL BR
C	1,173	1,692	499	148	3,512
E	332	997	504	82	1,915
N	747	917	883	319	2,866
NE	235	565	463	155	1,418
NW	1,676	3,194	2,079	434	7,383
S	280	891	380	44	1,595
SE	181	1,251	796	110	2,338
SW	417	819	478	67	1,781
W	303	760	325	60	1,448
XNE	36	24	4	-	64
XNW	38	222	163	22	445
XS	502	778	607	152	-
XSW	834	338	98	18	1,288
XW	49	105	46	9	209
Total	6,803	12,553	7,325	1,620	28,301

All CND – Total Listings

	0-2 BR	3 BR	4 BR	5+ BR	ALL BR
C	311	54	-	-	365
E	158	31	1	2	192
N	341	56	-	-	397
NE	96	9	-	-	105
NW	93	25	5	-	123
S	-	-	-	-	-
SE	-	1	-	-	1
SW	5	2	-	-	7
W	70	12	-	-	82
XNE	-	-	-	-	-
XNW	-	-	-	-	-
XS	5	-	-	-	-
XSW	97	-	-	-	97
XW	-	-	-	-	-
Total	1,176	190	6	2	1,374

All SFR – Total Listings

	0-2 BR	3 BR	4 BR	5+ BR	ALL BR
C	634	1,512	497	146	2,789
E	45	872	499	78	1,494
N	104	674	877	319	1,974
NE	44	497	455	155	1,151
NW	1,117	2,892	2,027	429	6,465
S	222	793	354	41	1,410
SE	132	1,140	762	108	2,142
SW	95	619	439	59	1,212
W	136	649	318	60	1,163
XNE	36	24	4	0	64
XNW	19	109	104	16	248
XS	384	720	583	150	0
XSW	344	205	63	9	621
XW	12	18	14	1	45
Total	3324	10,724	6,996	1,571	22,615

All MH – Total Listings

	0-2 BR	3 BR	4 BR	5+ BR	ALL BR
C	4	1	-	-	5
E	-	-	-	-	-
N	-	-	-	-	-
NE	-	-	-	-	-
NW	32	13	2	2	49
S	-	3	-	-	3
SE	1	2	-	-	3
SW	158	35	6	-	199
W	5	3	-	-	8
XNE	-	-	-	-	-
XNW	3	3	2	1	9
XS	2	1	-	-	-
XSW	4	6	2	-	12
XW	5	3	-	-	8
Total	214	70	12	3	299

All TH – Total Listings

	0-2 BR	3 BR	4 BR	5+ BR	ALL BR
C	220	116	2	-	338
E	129	94	4	2	229
N	302	187	6	-	495
NE	95	59	8	-	162
NW	372	94	3	-	469
S	53	20	4	1	78
SE	43	45	-	-	88
SW	25	4	-	-	29
W	74	58	1	-	133
XNE	-	-	-	-	-
XNW	-	-	-	-	-
XS	105	10	2	-	-
XSW	344	19	-	-	363
XW	-	-	-	-	-
Total	1,762	706	30	3	2,501

All MSFR – Total Listings

	0-2 BR	3 BR	4 BR	5+ BR	ALL BR
C	4	9	-	2	15
E	-	-	-	-	-
N	-	-	-	-	-
NE	-	-	-	-	-
NW	62	170	42	3	277
S	5	75	22	2	104
SE	5	63	34	2	104
SW	134	159	33	8	334
W	18	38	6	-	62
XNE	-	-	-	-	-
XNW	16	110	57	5	188
XS	6	47	22	2	-
XSW	45	108	33	9	195
XW	32	84	32	8	156
Total	327	863	281	41	1,512

Please note: The data contained in this report is dynamic in nature and therefore subject to change and adjust with the passage of time. These figures and charts are an approximation of the flow of business as observed through the Tucson Association of REALTORS® Multiple Listing Service. This report does not represent all real estate activity in the area as it does not include unrepresented sales, commercial sales or a substantial portion of new home sales. Though the data and materials presented here are deemed to be substantially correct, neither the Tucson Association of REALTORS® nor the MLS guarantees nor is in any way responsible for its accuracy.

2013 All RESIDENTIAL – Total Listings by Price and Area (1/1/13- 12/31/13)

	C	E	N	NE	NW	S	SE	SW	W	XNE	XNW	XS	XSW	XW	ALL Areas
29,999 or under	62	39	-	31	18	50	5	27	24	-	12	1	26	4	299
30,000 - 39,999	67	35	-	24	35	80	24	68	57	-	21	4	64	14	493
40,000 - 49,999	95	36	-	20	38	124	24	101	44	-	37	6	61	30	616
50,000 - 59,999	123	37	7	26	57	117	19	95	71	-	26	6	57	26	667
60,000 - 69,999	134	43	19	19	51	140	56	93	74	-	28	17	63	20	757
70,000 - 79,999	165	81	23	5	58	135	87	119	50	-	37	29	53	17	859
80,000 - 89,999	201	71	15	6	74	114	60	123	64	-	36	34	59	11	868
90,000 - 99,999	200	92	23	4	92	148	97	116	64	1	30	53	71	10	1,001
100,000 - 119,999	355	232	85	24	227	243	213	224	100	-	42	148	117	18	2,028
120,000 - 139,999	392	282	92	36	456	212	342	256	115	1	36	213	161	19	2,613
140,000 - 159,999	321	285	131	65	573	79	291	209	94	1	31	254	118	12	2,464
160,000 - 179,999	260	236	96	67	713	43	233	135	83	2	27	264	109	7	2,275
180,000 - 199,999	216	131	80	90	650	58	167	65	71	1	27	232	63	7	1,858
200,000 - 249,999	309	164	206	260	1,341	33	320	86	119	7	20	344	101	1	3,311
250,000 - 299,999	239	68	295	180	975	13	166	29	84	8	16	201	77	2	2,353
300,000 - 399,999	180	38	470	200	972	6	139	26	144	15	11	147	61	2	2,411
400,000 - 499,999	102	16	379	122	390	-	41	6	66	8	4	55	11	4	1,204
500,000 - 749,999	64	16	452	133	388	-	40	3	83	14	1	20	11	4	1,229
750,000 - 999,999	16	11	213	59	119	-	6	-	19	6	3	9	3	1	465
1,000,000 +	11	2	280	47	156	-	8	-	22	-	-	2	2	-	530
All Price Ranges	3,512	1,915	2,866	1,418	7,383	1,595	2,338	1,781	1,448	64	445	2,039	1,288	209	28,301

2013 All SFR – Total Listings by Price and Area (1/1/13- 12/31/13)

	C	E	N	NE	NW	S	SE	SW	W	XNE	XNW	XS	XSW	XW	ALL Areas
29,999 or under	6	-	-	-	3	37	-	2	6	-	1	1	4	2	62
30,000 - 39,999	23	-	-	-	3	49	2	7	12	-	2	-	3	1	102
40,000 - 49,999	42	1	-	-	5	86	-	21	19	-	3	-	2	1	180
50,000 - 59,999	72	5	-	-	5	96	10	23	31	-	4	1	1	1	249
60,000 - 69,999	92	11	-	-	11	110	28	43	37	-	5	5	10	2	354
70,000 - 79,999	113	22	-	-	19	111	51	65	26	-	10	10	3	2	432
80,000 - 89,999	141	40	-	1	25	106	35	78	37	-	19	22	14	4	522
90,000 - 99,999	151	65	-	1	36	142	82	79	45	1	15	31	10	3	661
100,000 - 119,999	275	176	1	8	162	237	204	165	67	-	29	107	46	3	1,480
120,000 - 139,999	303	248	4	8	371	210	331	213	110	1	32	176	82	7	2,096
140,000 - 159,999	266	262	10	36	487	79	284	187	93	1	27	233	81	3	2,049
160,000 - 179,999	238	225	18	53	635	40	231	124	80	2	25	253	84	3	2,011
180,000 - 199,999	200	124	12	78	583	56	166	62	69	1	25	223	47	2	1,648
200,000 - 249,999	292	164	93	239	1,187	32	319	81	117	7	18	341	86	-	2,976
250,000 - 299,999	223	68	199	169	930	13	166	27	81	8	14	201	69	-	2,168
300,000 - 399,999	169	38	391	198	953	6	139	26	143	15	11	147	55	2	2,293
400,000 - 499,999	92	16	326	121	387	-	40	6	66	8	4	55	10	4	1,135
500,000 - 749,999	64	16	430	133	388	-	40	3	83	14	1	20	9	4	1,205
750,000 - 999,999	16	11	211	59	119	-	6	-	19	6	3	9	3	1	463
1,000,000 +	11	2	279	47	156	-	8	-	22	-	-	2	2	-	529
ALL Price Ranges	2,789	1,494	1,974	1,151	6,465	1,410	2,142	1,212	1,163	64	248	1,837	621	45	22,615

Please note: The data contained in this report is dynamic in nature and therefore subject to change and adjust with the passage of time. These figures and charts are an approximation of the flow of business as observed through the Tucson Association of REALTORS® Multiple Listing Service. This report does not represent all real estate activity in the area as it does not include unrepresented sales, commercial sales or a substantial portion of new home sales. Though the data and materials presented here are deemed to be substantially correct, neither the Tucson Association of REALTORS® nor the MLS guarantees nor is in any way responsible for its accuracy.

2013 All TH – Total Listings by Price and Area (1/1/13- 12/31/13)

	C	E	N	NE	NW	S	SE	SW	W	XNE	XNW	XS	XSW	XW	ALL Areas
29,999 or under	4	1	-	-	-	4	2	-	2	-	-	-	-	-	13
30,000 - 39,999	8	4	-	3	-	15	7	-	8	-	-	-	2	-	47
40,000 - 49,999	15	9	-	4	-	18	8	3	6	-	-	-	5	-	68
50,000 - 59,999	21	2	-	6	1	7	6	4	22	-	-	1	3	-	73
60,000 - 69,999	11	13	-	9	1	12	10	1	20	-	-	5	22	-	104
70,000 - 79,999	25	37	2	1	1	10	17	6	11	-	-	11	37	-	158
80,000 - 89,999	29	18	2	3	7	3	15	2	16	-	-	5	29	-	129
90,000 - 99,999	16	25	2	3	13	3	8	4	9	-	-	13	41	-	137
100,000 - 119,999	57	55	8	16	32	1	5	3	25	-	-	29	58	-	289
120,000 - 139,999	66	33	30	28	46	1	4	6	4	-	-	22	71	-	311
140,000 - 159,999	36	21	39	29	53	-	5	-	1	-	-	12	36	-	232
160,000 - 179,999	15	8	38	13	59	2	-	-	1	-	-	10	21	-	167
180,000 - 199,999	9	3	42	12	48	2	-	-	2	-	-	7	13	-	138
200,000 - 249,999	10	-	92	21	145	-	1	-	2	-	-	2	14	-	287
250,000 - 299,999	8	-	85	11	43	-	-	-	3	-	-	-	7	-	157
300,000 - 399,999	3	-	77	2	18	-	-	-	1	-	-	-	4	-	105
400,000 - 499,999	5	-	53	1	2	-	-	-	-	-	-	-	-	-	61
500,000 - 749,999	-	-	22	-	-	-	-	-	-	-	-	-	-	-	22
750,000 - 999,999	-	-	2	-	-	-	-	-	-	-	-	-	-	-	2
1,000,000 +	-	-	1	-	-	-	-	-	-	-	-	-	-	-	1
ALL Price Ranges	338	229	495	162	469	78	88	29	133	-	-	117	363	-	2,501

2013 All CND – Total Listings by Price and Area (1/1/13- 12/31/13)

	C	E	N	NE	NW	S	SE	SW	W	XNE	XNW	XS	XSW	XW	ALL Areas
29,999 or under	51	38	-	31	5	-	-	-	9	-	-	-	1	-	135
30,000 - 39,999	32	31	-	21	13	-	-	6	18	-	-	-	18	-	139
40,000 - 49,999	34	26	-	16	5	-	-	-	13	-	-	-	28	-	122
50,000 - 59,999	27	30	7	20	7	-	-	-	9	-	-	1	32	-	133
60,000 - 69,999	29	19	19	10	6	-	1	-	4	-	-	-	10	-	98
70,000 - 79,999	23	22	21	4	4	-	-	-	9	-	-	-	1	-	84
80,000 - 89,999	30	13	13	2	10	-	-	-	6	-	-	1	-	-	75
90,000 - 99,999	32	2	21	-	6	-	-	1	8	-	-	-	2	-	72
100,000 - 119,999	23	1	76	-	10	-	-	-	6	-	-	-	2	-	118
120,000 - 139,999	23	1	58	-	7	-	-	-	-	-	-	3	3	-	95
140,000 - 159,999	19	2	82	-	16	-	-	-	-	-	-	-	-	-	119
160,000 - 179,999	7	3	40	1	13	-	-	-	-	-	-	-	-	-	64
180,000 - 199,999	7	4	26	-	14	-	-	-	-	-	-	-	-	-	51
200,000 - 249,999	7	-	21	-	6	-	-	-	-	-	-	-	-	-	34
250,000 - 299,999	8	-	11	-	1	-	-	-	-	-	-	-	-	-	20
300,000 - 399,999	8	-	2	-	-	-	-	-	-	-	-	-	-	-	10
400,000 - 499,999	5	-	-	-	-	-	-	-	-	-	-	-	-	-	5
500,000 - 749,999	-	-	-	-	-	-	-	-	-	-	-	-	-	-	-
750,000 - 999,999	-	-	-	-	-	-	-	-	-	-	-	-	-	-	-
1,000,000 +	-	-	-	-	-	-	-	-	-	-	-	-	-	-	-
ALL Price Ranges	365	192	397	105	123	-	1	7	82	-	-	5	97	-	1,374

Please note: The data contained in this report is dynamic in nature and therefore subject to change and adjust with the passage of time. These figures and charts are an approximation of the flow of business as observed through the Tucson Association of REALTORS® Multiple Listing Service. This report does not represent all real estate activity in the area as it does not include unrepresented sales, commercial sales or a substantial portion of new home sales. Though the data and materials presented here are deemed to be substantially correct, neither the Tucson Association of REALTORS® nor the MLS guarantees nor is in any way responsible for its accuracy.

2013 All MH – Total Listings by Price and Area (1/1/13- 12/31/13)

	C	E	N	NE	NW	S	SE	SW	W	XNE	XNW	XS	XSW	XW	ALL Areas
29,999 or under	-	-	-	-	1	1	1	10	4	-	1	-	-	-	18
30,000 - 39,999	1	-	-	-	7	-	1	23	2	-	-	1	2	-	37
40,000 - 49,999	4	-	-	-	5	1	-	40	-	-	5	-	3	2	60
50,000 - 59,999	-	-	-	-	9	-	-	29	1	-	-	-	2	-	41
60,000 - 69,999	-	-	-	-	5	1	-	25	-	-	-	-	2	1	34
70,000 - 79,999	-	-	-	-	5	-	1	20	-	-	1	1	-	2	30
80,000 - 89,999	-	-	-	-	4	-	-	22	-	-	-	-	1	-	27
90,000 - 99,999	-	-	-	-	4	-	-	9	-	-	1	-	1	-	15
100,000 - 119,999	-	-	-	-	3	-	-	8	1	-	-	-	-	-	12
120,000 - 139,999	-	-	-	-	6	-	-	8	-	-	-	1	-	1	16
140,000 - 159,999	-	-	-	-	-	-	-	2	-	-	1	-	-	1	4
160,000 - 179,999	-	-	-	-	-	-	-	1	-	-	-	-	-	-	1
180,000 - 199,999	-	-	-	-	-	-	-	2	-	-	-	-	-	-	2
200,000 - 249,999	-	-	-	-	-	-	-	-	-	-	-	-	1	1	2
250,000 - 299,999	-	-	-	-	-	-	-	-	-	-	-	-	-	-	-
300,000 - 399,999	-	-	-	-	-	-	-	-	-	-	-	-	-	-	-
400,000 - 499,999	-	-	-	-	-	-	-	-	-	-	-	-	-	-	-
500,000 - 749,999	-	-	-	-	-	-	-	-	-	-	-	-	-	-	-
750,000 - 999,999	-	-	-	-	-	-	-	-	-	-	-	-	-	-	-
1,000,000 +	-	-	-	-	-	-	-	-	-	-	-	-	-	-	-
ALL Price Ranges	5	-	-	-	49	3	3	199	8	-	9	3	12	8	299

2013 All MSFR – Total Listings by Price and Area (1/1/13- 12/31/13)

	C	E	N	NE	NW	S	SE	SW	W	XNE	XNW	XS	XSW	XW	ALL Areas
29,999 or under	1	-	-	-	9	8	2	15	3	-	10	-	21	2	71
30,000 - 39,999	3	-	-	-	12	16	14	32	17	-	19	3	39	13	168
40,000 - 49,999	-	-	-	-	23	19	16	37	6	-	29	6	23	27	186
50,000 - 59,999	3	-	-	-	35	14	3	39	8	-	22	3	19	25	171
60,000 - 69,999	2	-	-	-	28	17	17	24	13	-	23	7	19	17	167
70,000 - 79,999	4	-	-	-	29	14	18	28	4	-	26	7	12	13	155
80,000 - 89,999	1	-	-	-	28	5	10	21	5	-	17	6	15	7	115
90,000 - 99,999	1	-	-	-	33	3	7	23	2	-	14	9	17	7	116
100,000 - 119,999	-	-	-	-	20	5	4	48	1	-	13	12	11	15	129
120,000 - 139,999	-	-	-	-	26	1	7	29	1	-	4	11	5	11	95
140,000 - 159,999	-	-	-	-	17	-	2	20	-	-	3	9	1	8	60
160,000 - 179,999	-	-	-	-	6	1	2	10	2	-	2	1	4	4	32
180,000 - 199,999	-	-	-	-	5	-	1	1	-	-	2	2	3	5	19
200,000 - 249,999	-	-	-	-	3	1	-	5	-	-	2	1	-	-	12
250,000 - 299,999	-	-	-	-	1	-	-	2	-	-	2	-	1	2	8
300,000 - 399,999	-	-	-	-	1	-	-	-	-	-	-	-	2	-	3
400,000 - 499,999	-	-	-	-	1	-	1	-	-	-	-	-	1	-	3
500,000 - 749,999	-	-	-	-	-	-	-	-	-	-	-	-	2	-	2
750,000 - 999,999	-	-	-	-	-	-	-	-	-	-	-	-	-	-	-
1,000,000 +	-	-	-	-	-	-	-	-	-	-	-	-	-	-	-
ALL Price Ranges	15	-	-	-	277	104	104	334	62	-	188	77	195	156	1,512

Please note: The data contained in this report is dynamic in nature and therefore subject to change and adjust with the passage of time. These figures and charts are an approximation of the flow of business as observed through the Tucson Association of REALTORS® Multiple Listing Service. This report does not represent all real estate activity in the area as it does not include unrepresented sales, commercial sales or a substantial portion of new home sales. Though the data and materials presented here are deemed to be substantially correct, neither the Tucson Association of REALTORS® nor the MLS guarantees nor is in any way responsible for its accuracy.

YEAR END 2013 RESIDENTIAL SALES STATISTICS

2013 All RESIDENTIAL – Expired Listings

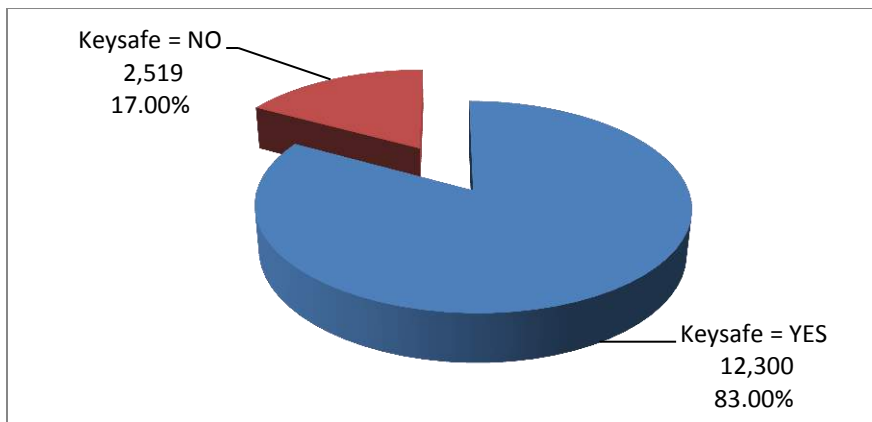
	C	E	N	NE	NW	S	SE	SW	W	XNE	XNW	XS	XSW	XW	ALL Areas
29,999 or under	11	4	-	2	-	1	-	1	-	-	1	-	2	-	22
30,000 - 39,999	11	5	-	2	3	1	-	5	3	-	1	-	9	-	40
40,000 - 49,999	6	4	-	2	2	7	-	8	1	-	4	-	14	-	48
50,000 - 59,999	6	3	2	-	5	6	-	10	3	-	2	-	12	3	52
60,000 - 69,999	6	2	2	2	4	8	2	9	7	-	6	1	11	1	61
70,000 - 79,999	15	5	2	-	8	4	4	9	4	-	5	7	7	4	74
80,000 - 89,999	15	1	1	-	5	4	3	11	6	-	3	3	7	1	60
90,000 - 99,999	17	2	-	-	8	5	4	4	2	-	3	5	13	-	63
100,000 - 119,999	29	12	4	3	8	12	9	10	4	-	3	12	11	4	121
120,000 - 139,999	29	14	12	1	22	13	16	12	6	1	3	19	20	2	170
140,000 - 159,999	18	17	14	4	24	6	10	16	3	-	3	18	6	1	140
160,000 - 179,999	26	14	10	1	31	3	17	8	1	1	2	17	10	1	142
180,000 - 199,999	17	3	7	6	39	3	11	3	6	-	1	18	7	2	123
200,000 - 249,999	34	10	16	21	80	1	19	11	11	4	-	14	18	-	239
250,000 - 299,999	31	2	20	21	71	7	11	1	9	3	2	23	17	1	219
300,000 - 399,999	16	1	38	27	100	1	18	6	10	1	-	11	8	1	238
400,000 - 499,999	14	-	29	16	50	-	5	-	6	3	1	9	4	3	140
500,000 - 749,999	7	1	50	20	68	-	3	1	11	6	-	3	3	2	175
750,000 - 999,999	1	1	32	7	20	-	-	-	2	3	2	1	2	-	71
1,000,000 +	2	-	57	8	30	-	1	-	5	-	-	-	1	-	104
ALL Price Ranges	311	101	296	143	578	82	133	125	100	22	42	161	182	26	2,302

2013 All RESIDENTIAL – Cancelled Listings

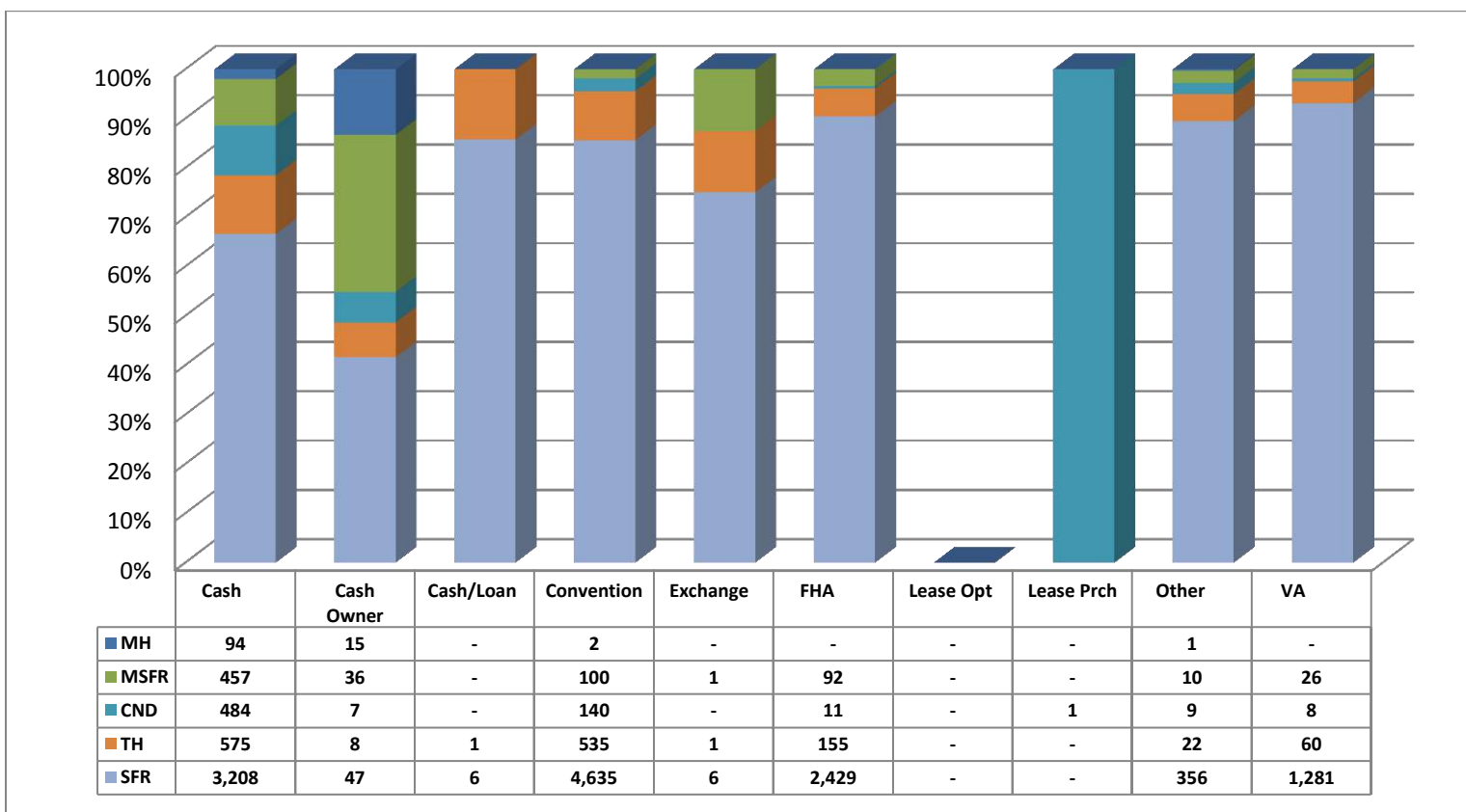
	C	E	N	NE	NW	S	SE	SW	W	XNE	XNW	XS	XSW	XW	ALL Areas
29,999 or under	6	8	-	5	4	3	1	2	4	-	-	-	4	1	38
30,000 - 39,999	8	6	-	3	3	10	1	5	8	-	2	-	2	1	49
40,000 - 49,999	7	8	-	7	5	14	2	15	5	-	6	-	12	3	84
50,000 - 59,999	14	2	2	4	7	22	-	14	8	-	5	1	14	5	98
60,000 - 69,999	16	5	1	1	11	23	11	11	11	-	5	-	7	4	106
70,000 - 79,999	21	11	3	-	9	18	4	17	8	-	5	1	7	2	106
80,000 - 89,999	23	9	2	-	10	26	5	18	5	-	4	2	9	2	115
90,000 - 99,999	39	9	5	1	10	17	11	21	13	-	4	4	8	3	145
100,000 - 119,999	54	20	10	1	20	25	32	31	15	-	7	15	12	3	245
120,000 - 139,999	54	29	15	3	50	19	35	21	11	-	4	25	13	-	279
140,000 - 159,999	49	34	9	8	47	8	37	24	5	1	3	25	20	3	273
160,000 - 179,999	31	30	19	7	77	4	19	20	6	-	3	29	19	2	266
180,000 - 199,999	33	24	11	10	68	4	13	6	14	-	8	25	7	-	223
200,000 - 249,999	63	30	25	44	186	4	41	13	22	-	2	31	15	1	477
250,000 - 299,999	45	12	41	23	162	1	26	7	15	1	3	22	13	-	371
300,000 - 399,999	40	6	64	27	153	1	14	6	36	2	5	29	11	-	394
400,000 - 499,999	18	-	70	24	68	-	5	1	13	1	2	11	-	-	213
500,000 - 749,999	13	2	109	25	56	-	8	1	23	1	-	2	2	1	243
750,000 - 999,999	6	5	48	18	22	-	-	-	9	-	-	4	-	-	112
1,000,000 +	4	1	74	14	31	-	4	-	7	-	-	1	-	-	136
ALL Price Ranges	544	251	508	225	999	199	269	233	238	6	68	227	175	31	3,973

Please note: The data contained in this report is dynamic in nature and therefore subject to change and adjust with the passage of time. These figures and charts are an approximation of the flow of business as observed through the Tucson Association of REALTORS® Multiple Listing Service. This report does not represent all real estate activity in the area as it does not include unrepresented sales, commercial sales or a substantial portion of new home sales. Though the data and materials presented here are deemed to be substantially correct, neither the Tucson Association of REALTORS® nor the MLS guarantees nor is in any way responsible for its accuracy.

2013 Sold Properties Keysafe Analysis – All Residential



2013 All Residential Terms of Sale by Terms and Type



Please note: The data contained in this report is dynamic in nature and therefore subject to change and adjust with the passage of time. These figures and charts are an approximation of the flow of business as observed through the Tucson Association of REALTORS® Multiple Listing Service. This report does not represent all real estate activity in the area as it does not include unrepresented sales, commercial sales or a substantial portion of new home sales. Though the data and materials presented here are deemed to be substantially correct, neither the Tucson Association of REALTORS® nor the MLS guarantees nor is in any way responsible for its accuracy.