



Danette Bewley, A.A.E.
Tucson Airport Authority
President and CEO

TUS: AN ECONOMIC ENGINE

CONNECTING TUCSON THE TO THE WORLD

March 10, 2023 | The Power of Real Estate Summit



TUCSON AIRPORT AUTHORITY | AIRPORT SYSTEM



MISSION Provide a sustainable airport system and constantly pursue initiatives that promote and grow business opportunities.

VISION Landing prosperity in Southern Arizona.

ECONOMIC IMPACT In 2021, the airport system that includes Tucson International Airport (TUS) and Ryan Airfield (RYN) produced an annual economic impact of \$8.6 billion for the region (Source: ADOT).

TUCSON INTERNATIONAL AIRPORT | TUS



Commercial Service Airport

3.4 Million Passengers in 2022

55 Peak Daily Departures

21 Nonstop Destinations

7 Airlines



REVENUE GENERATION



REVENUE GENERATION

| Revenue Source | | FY21 % | FY21 % |
|--------------------|--|--------|--------|
| Airline Driven | Passenger airline rates and charges, including terminal rentals and landing fees | 31.4% | 65.5% |
| | Concession revenues (food and beverage, news and gifts, rental car, and parking) | 34.1% | |
| Non-Airline Driven | Other operating revenue (non-terminal space rentals and land rent) | 34.5% | 34.5% |
| Total | | 100% | 100% |

AIR SERVICE DEVELOPMENT



AIRLINES AT TUS

Alaska

American Airlines 

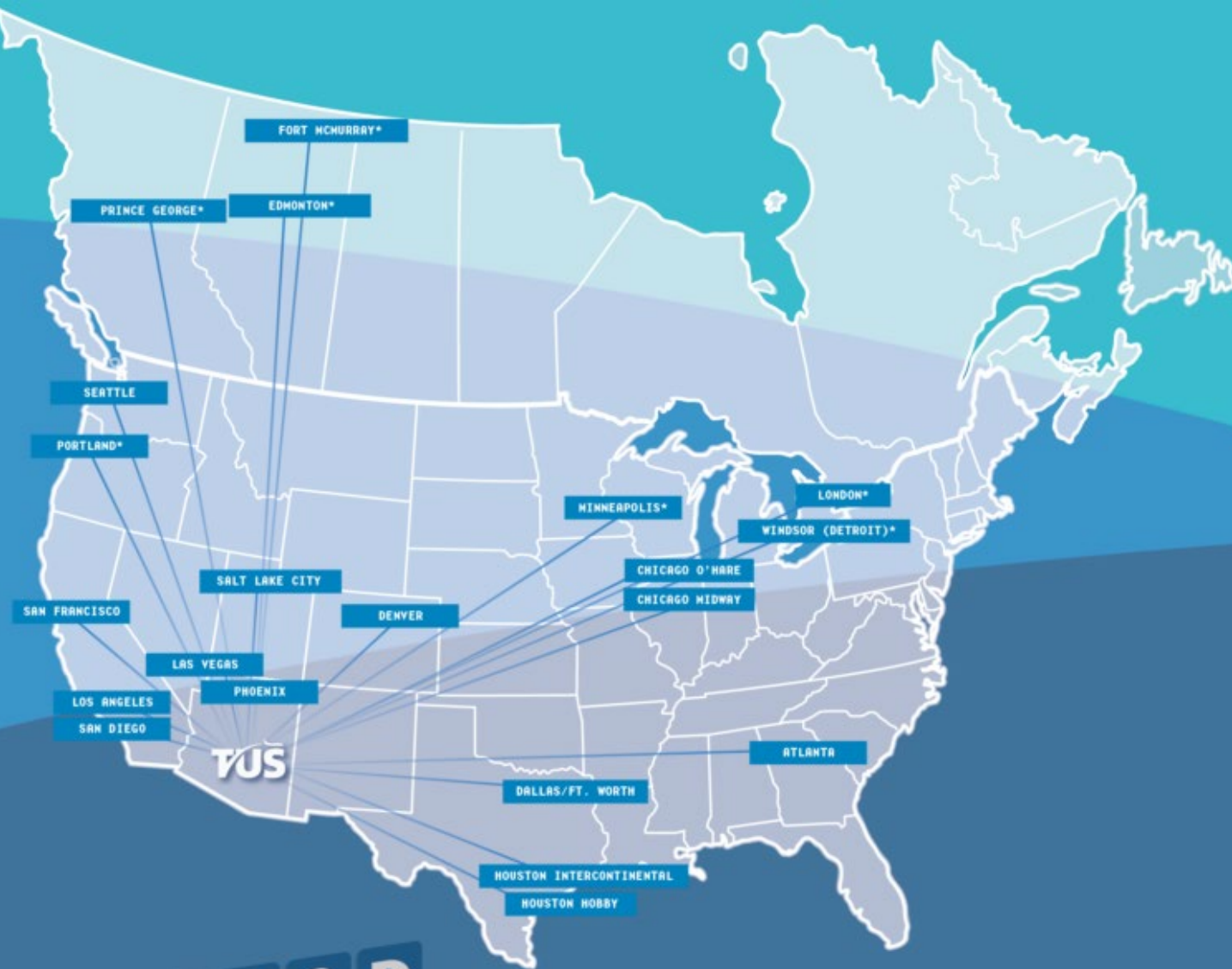
 DELTA

flair  airlines™

Southwest® 

 sun country airlines.

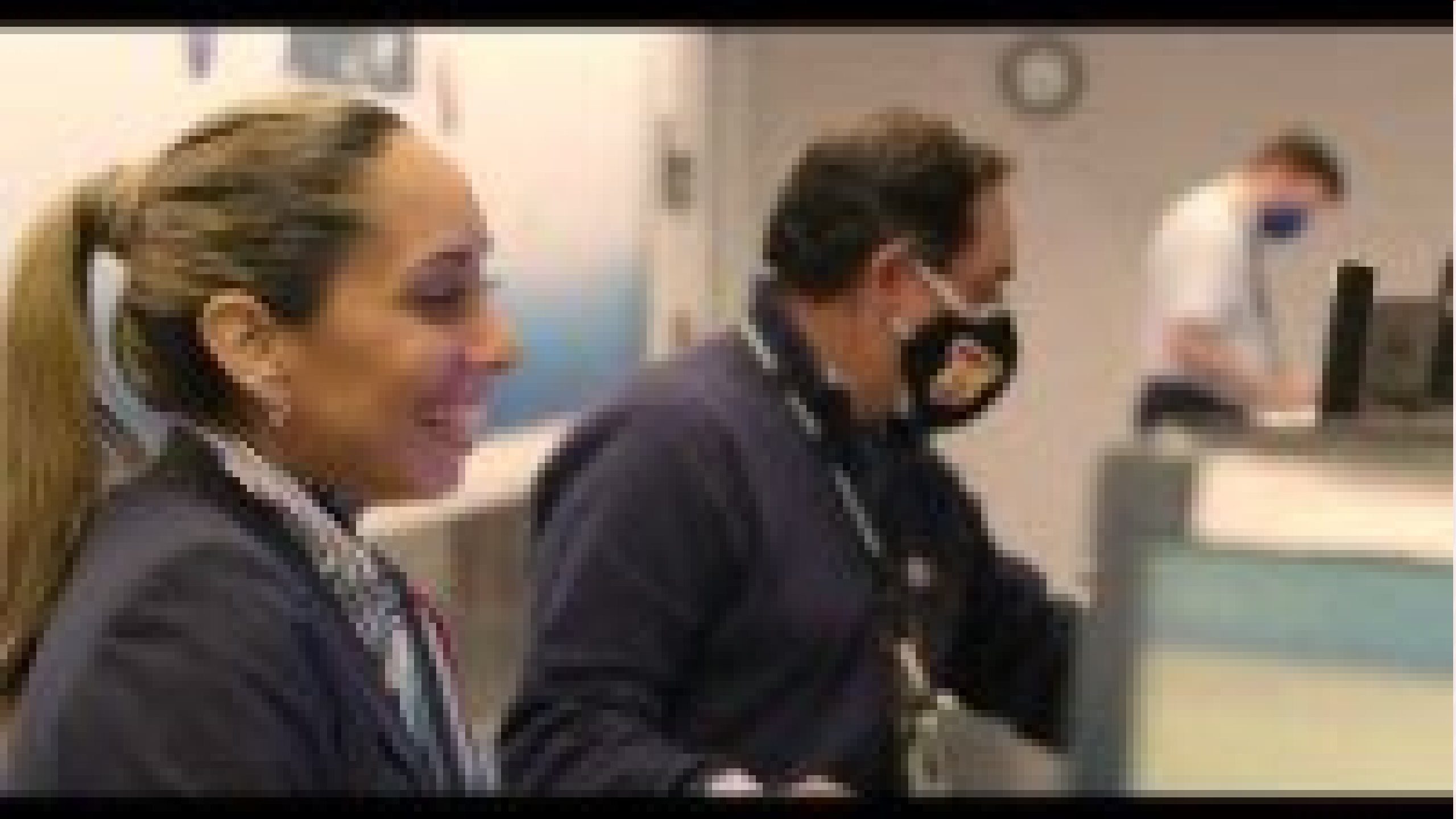
UNITED 



NONSTOP
FOR TUCSON

NONSTOP DESTINATIONS

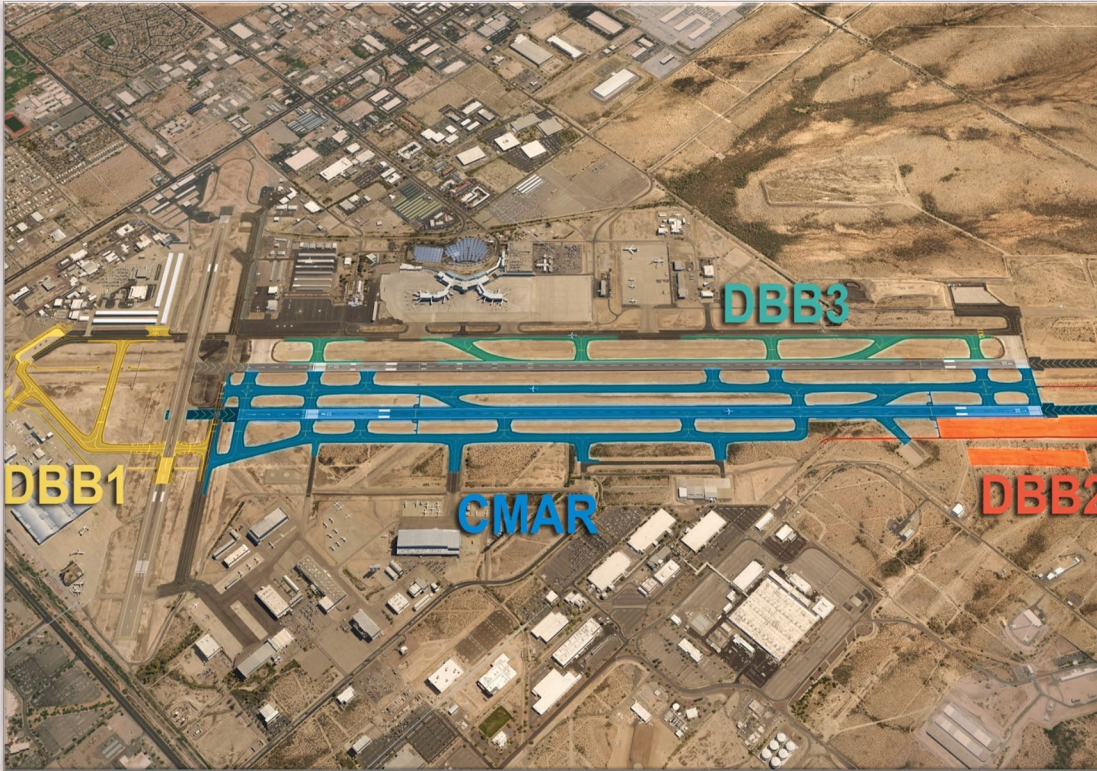
*Seasonal





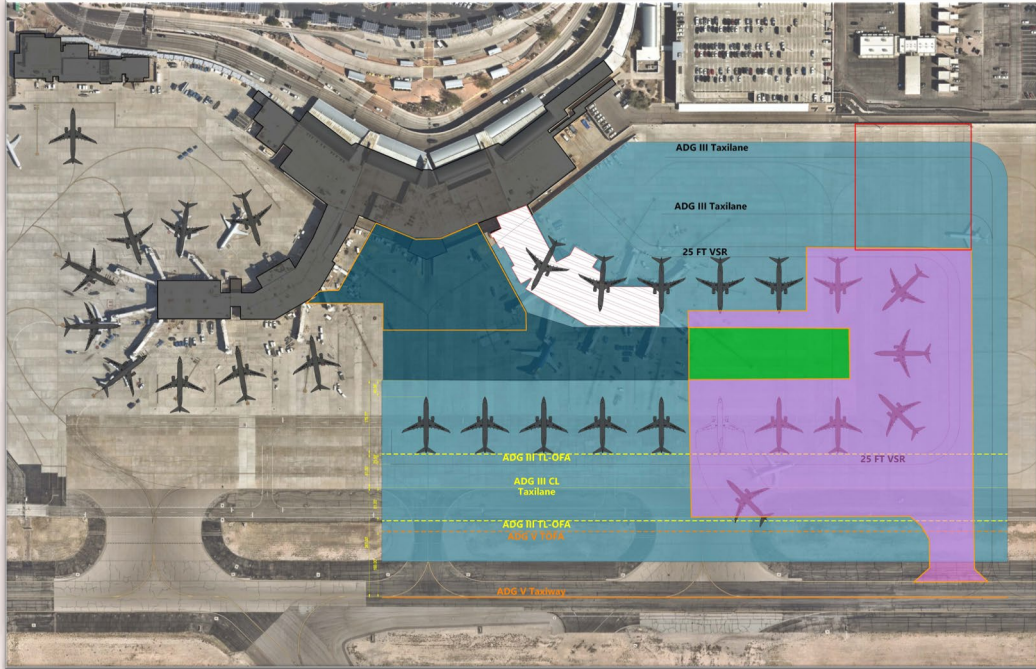
INFRASTRUCTURE INVESTMENTS

AIRFIELD SAFETY ENHANCEMENT PROGRAM



- \$400+ million Safety and Standards Program to meet FAA Regulations
- Demolition, re-alignment and construction of second parallel runway
- New Taxiways; improved geometry
- Improvements that support ANG
- Project Completion (2027 - 2030)
 - Dependent on federal funding

FUTURE TERMINAL PLANNING



Terminal Concept Plan | January 2023

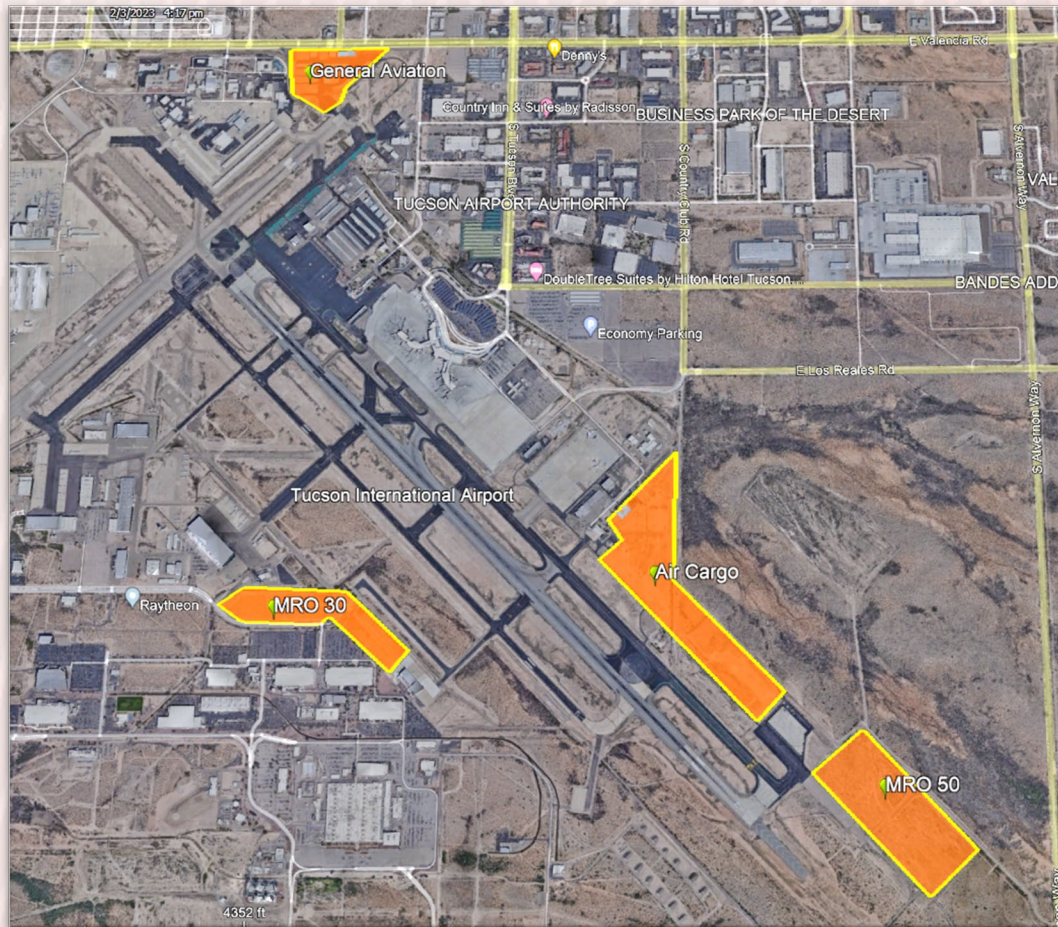
- Prepare for future demand
- TUS market shows forecasted growth
- Replace outdated infrastructure
- New efficient baggage system
- Improve passenger experience

Airlines support efforts to expand gates and upgrade critical infrastructure to meet growth projections | \$1.1B (2023 dollars)



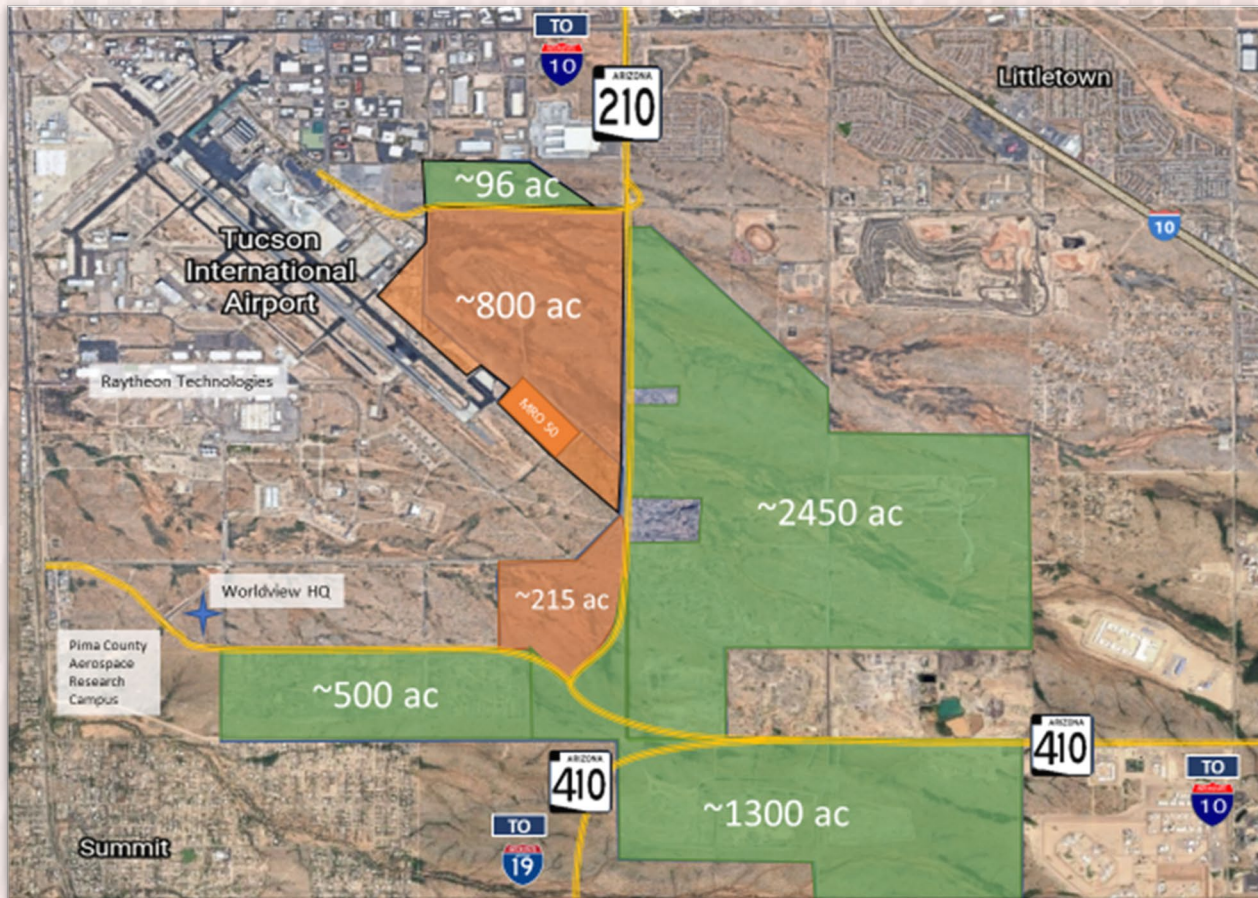
ECONOMIC DEVELOPMENT

AERONAUTICAL LAND OPPORTUNITIES



- Strategically located nearby large MRO and/or manufacturing facilities
- Small and medium MRO or commercial hangars
- Air Cargo and General Aviation

NON-AERONAUTICAL LAND OPPORTUNITIES



Strategically located nearby:

- Interstates 10 and 19
- Proposed Sonoran Corridor
- Union Pacific Railroad
- Port of Tucson
- Tucson International Airport

Challenges:

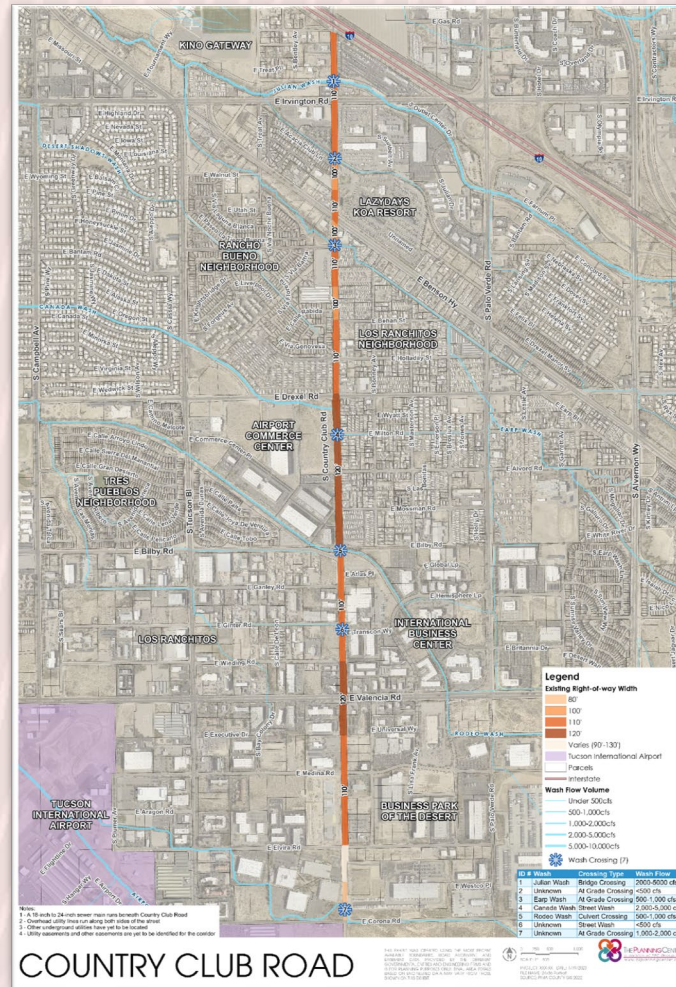
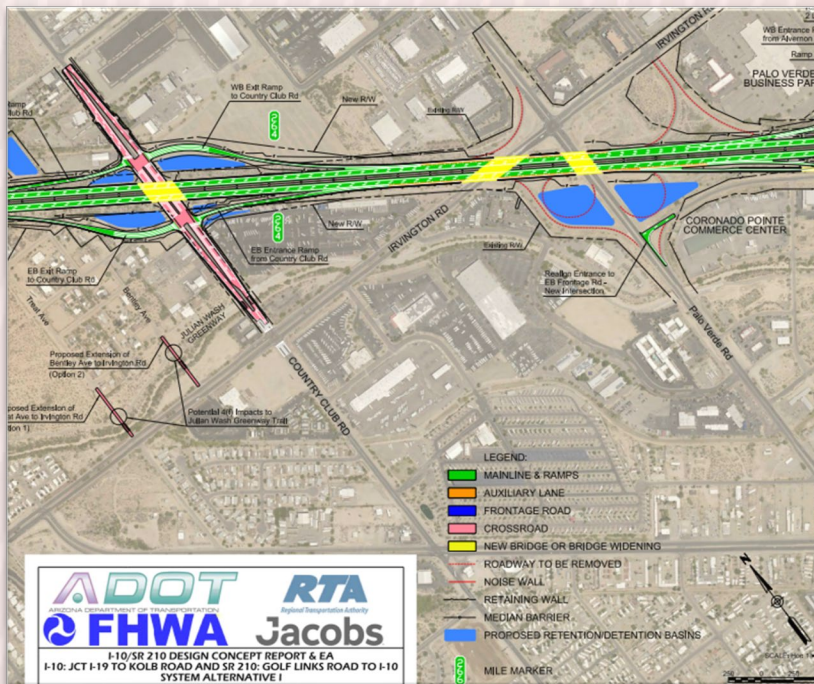
- FAA processes
- Environmental (NEPA)
- Land ownership
- Source of funds used to purchase land
- Potential FAA Repayment



REGIONAL TRANSPORTATION PLAN: FREEWAY PROGRAM

I-10 COUNTRY CLUB INTERCHANGE

Country Club Road Interchange and Surface Improvements



- Essential for expanded/improved access to TUS and surrounding land
- PAG/RTA will consider as part of RTA Next
- Four lane divided roadway with center median
- Complements concept for TUS Terminal Expansion

THANK YOU.

Q&A SESSION

Danette Bewley, A.A.E.
President and CEO