

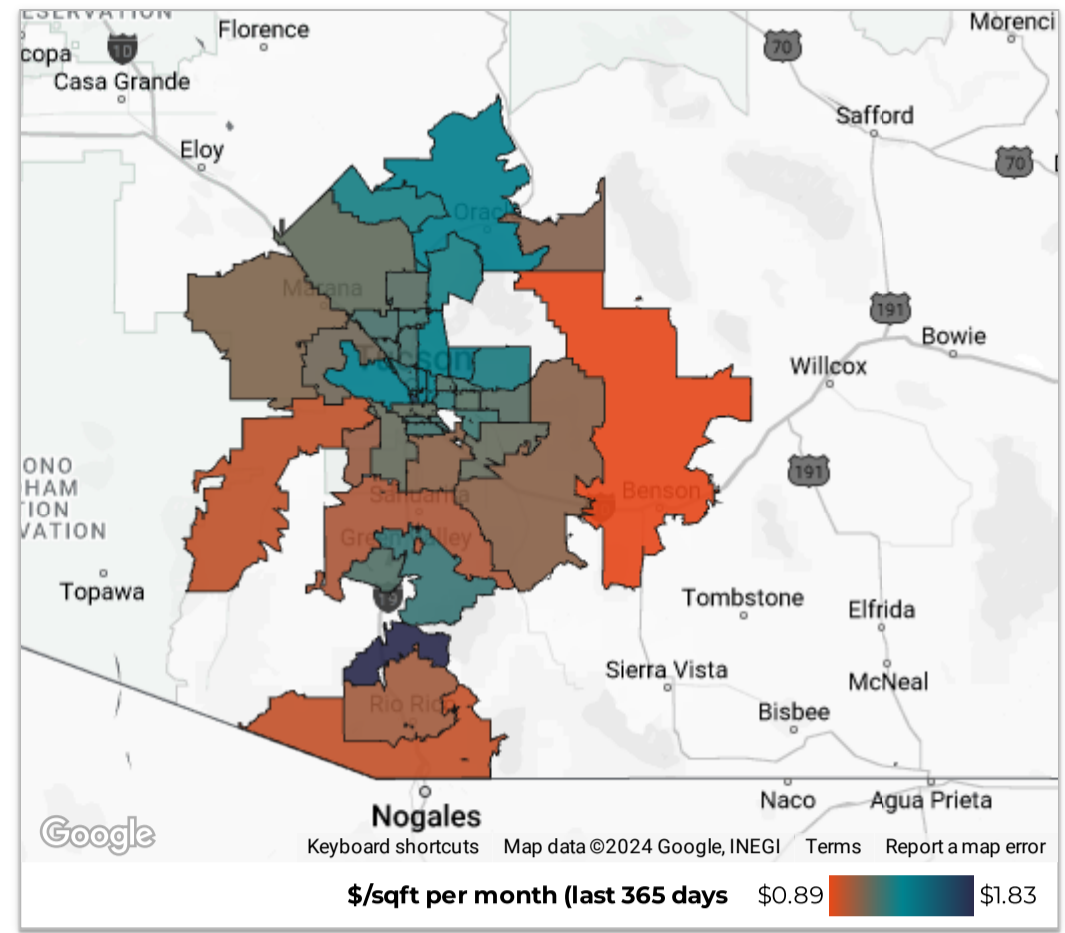
Southern AZ Rental Housing Market

All data is updated in realtime in accordance with content from MLSSAZ.
This report provides a snapshot of the market as taken on: May 7, 2024

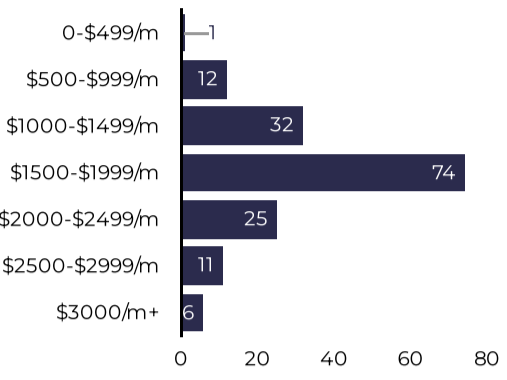
Region City Zip Code

County Type Beds

Price Range Between and



April



of Leases: **161**
 ↓ -22.2% from previous year

Median Lease (\$/month): **\$1,795**
 0.0% from previous year

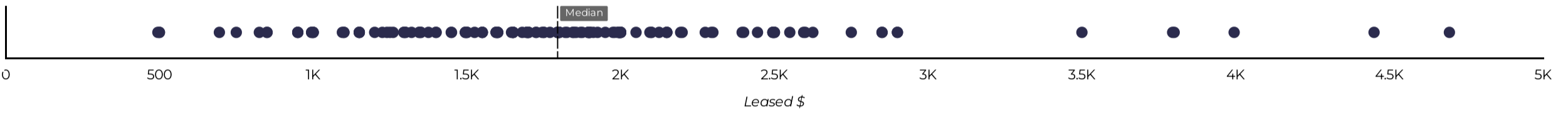
Total Monthly Rental Volume: **\$290,870**
 ↓ -23.9% from previous year

Median Days on Market: **25**
 ↓ -1 from previous year

\$/sqft: **\$1.25**
 ↑ \$0.02 from previous year

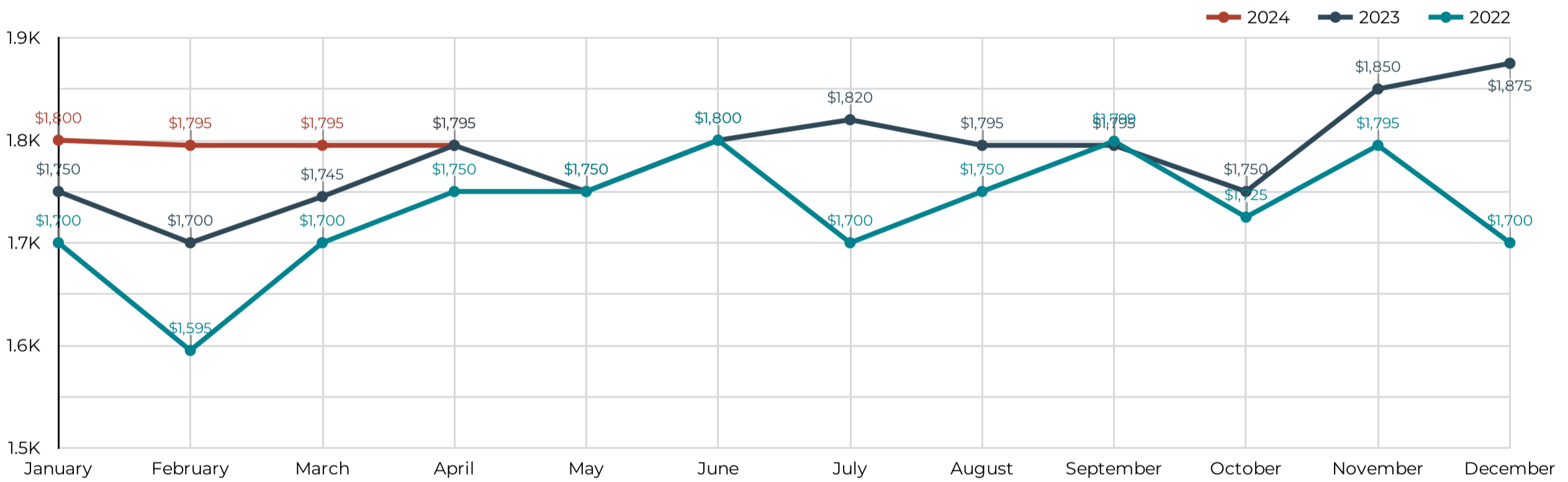
Average % Over Asking: **-0.41%**
 ↓ -0.56% from previous year

Leases



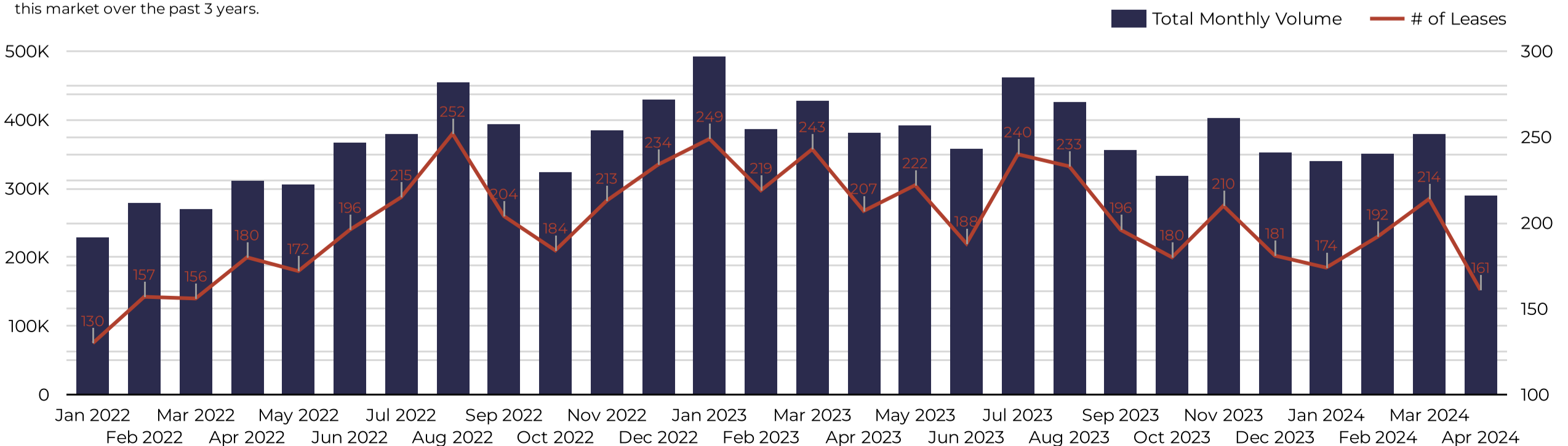
Median Rental Price/Month

Use this data to see how the cost of real estate has changed in this area over the last 3 years.



Market Activity

Use this data to see changes in total lease activity in this market over the past 3 years.



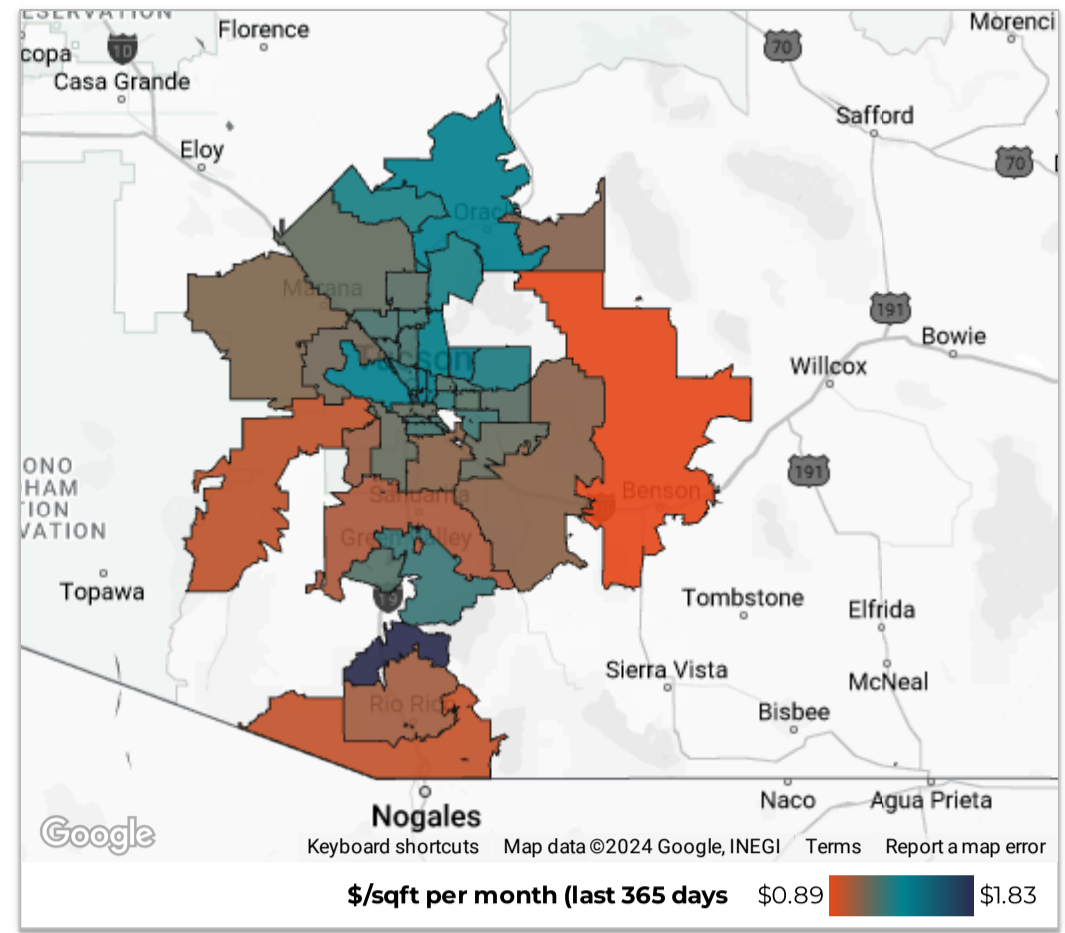
Southern AZ Rental Housing Market

All data is updated in realtime in accordance with content from MLSSAZ.
This report provides a snapshot of the market as taken on: May 7, 2024

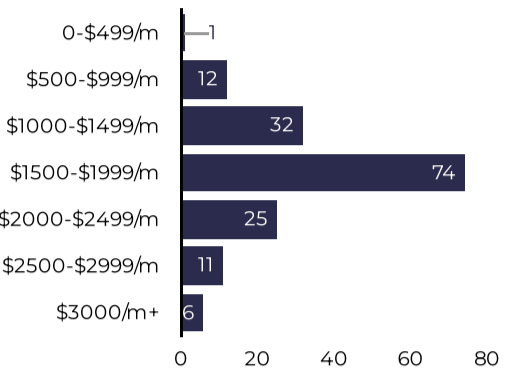
Region City Zip Code

County Type Beds

Price Range Between and



April



of Leases
161
↓ -22.2% from previous year

Median Lease (\$/month)
\$1,795
0.0% from previous year

Total Monthly Rental Volume
\$290,870
↓ -23.9% from previous year

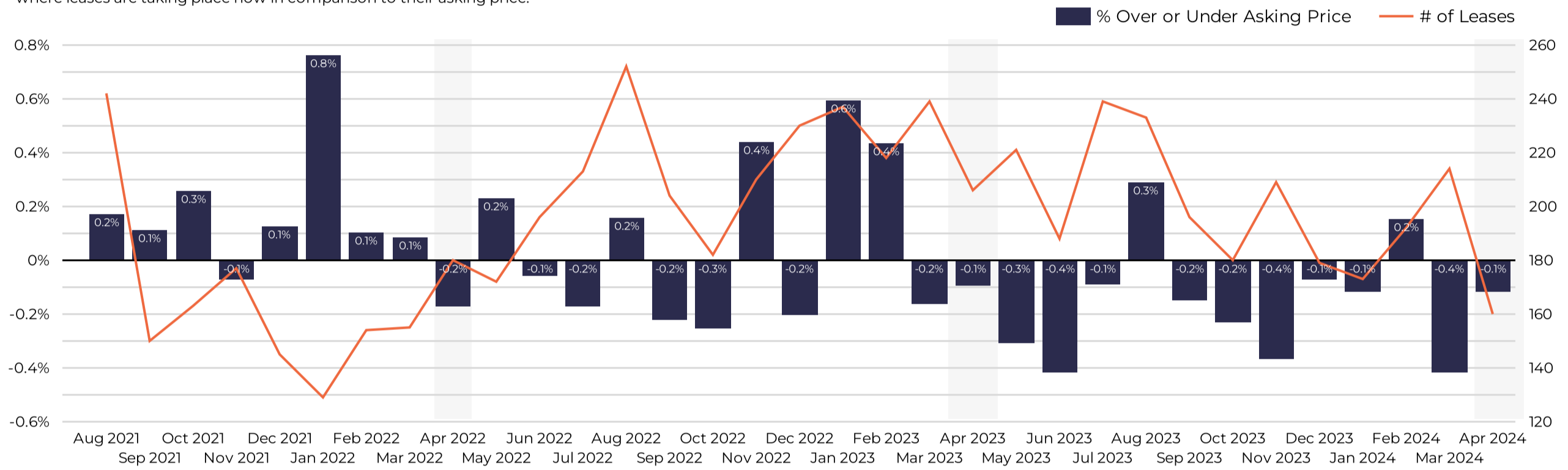
Median Days on Market
25
↓ -1 from previous year

\$/sqft
\$1.25
↑ \$0.02 from previous year

Average % Over Asking
-0.41%
↓ -0.56% from previous year

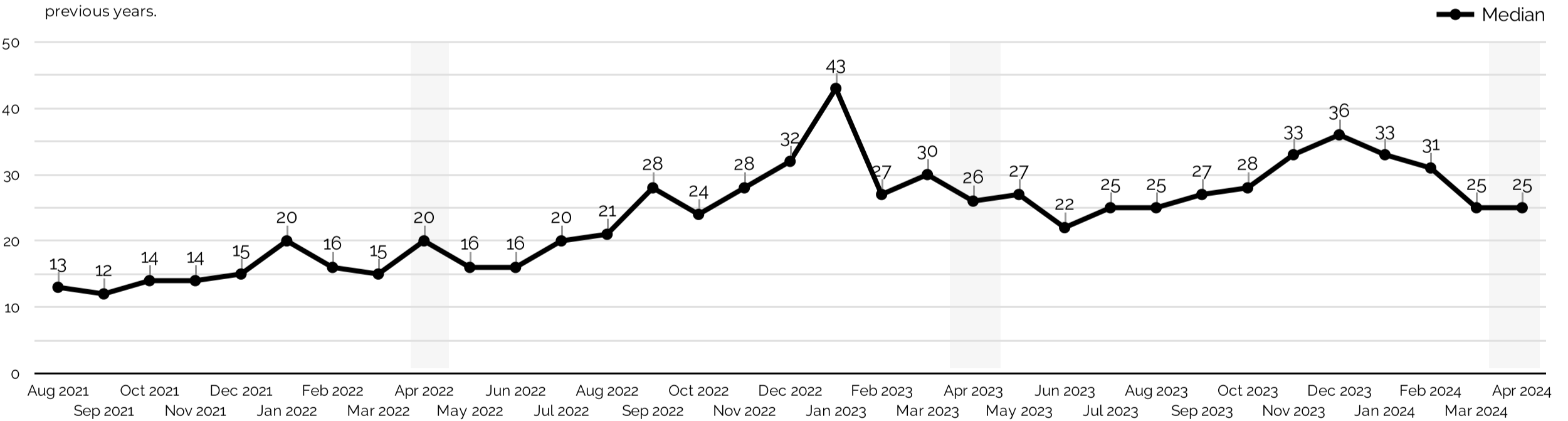
Renter Demand

Explore the seasonality of competitive bidding in this area and understand where leases are taking place now in comparison to their asking price.



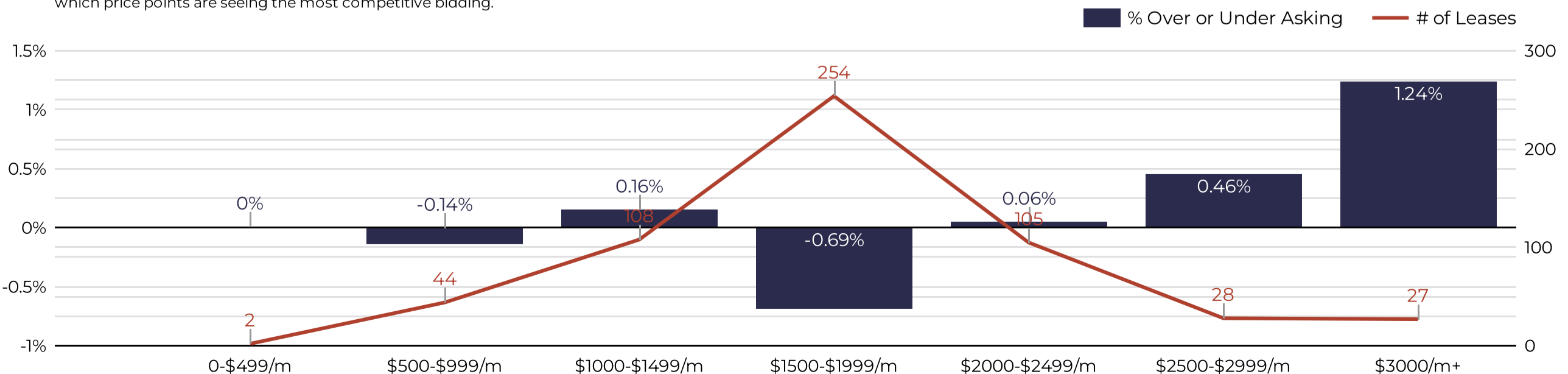
Days on Market

This graphic will help to show how fast listings are leasing vs. in previous years.



Renter Demand at Each Price Range (last 90 days)

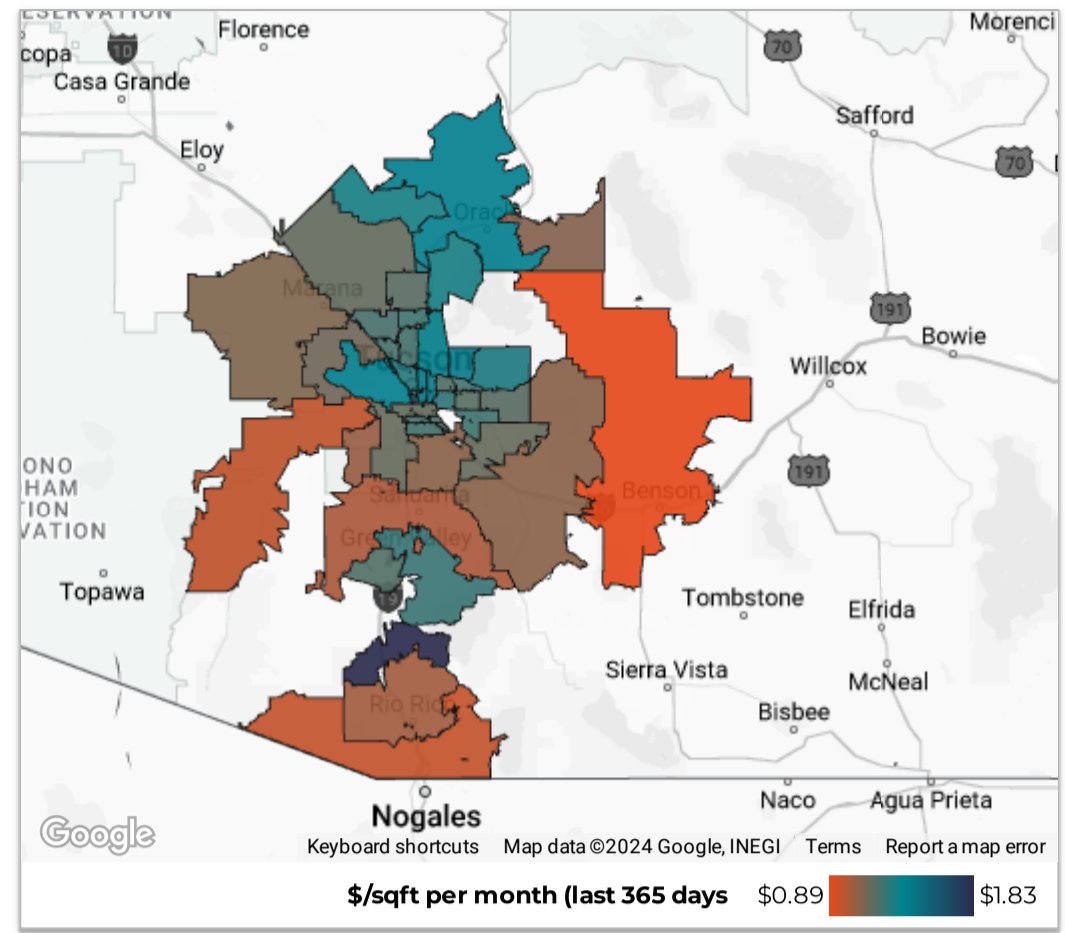
Each price range typically attracts competing renters differently. Use this data to see which price points are seeing the most competitive bidding.



Southern AZ Rental Housing Market

All data is updated in realtime in accordance with content from MLSSAZ. This report provides a snapshot of the market as taken on: May 7, 2024

Region City Zip Code
 County Type Beds
 Price Range Between Enter a value and Enter a value Download

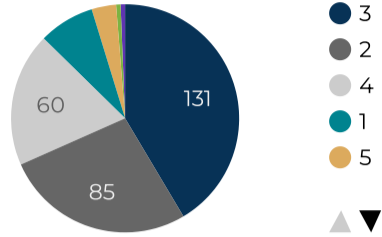


April

of New Listings (Supply)
316
 ↑ 63 from previous year

of New Pending (Demand)
70
 ↓ -31 from previous year

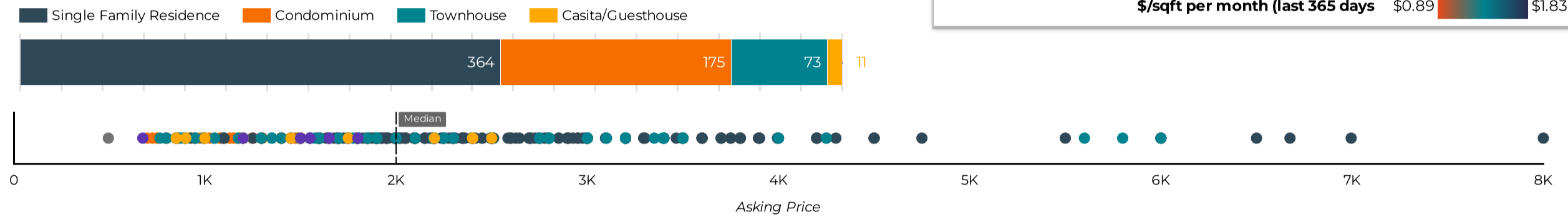
of Bedrooms Delivered



Months of Supply Now
3.92

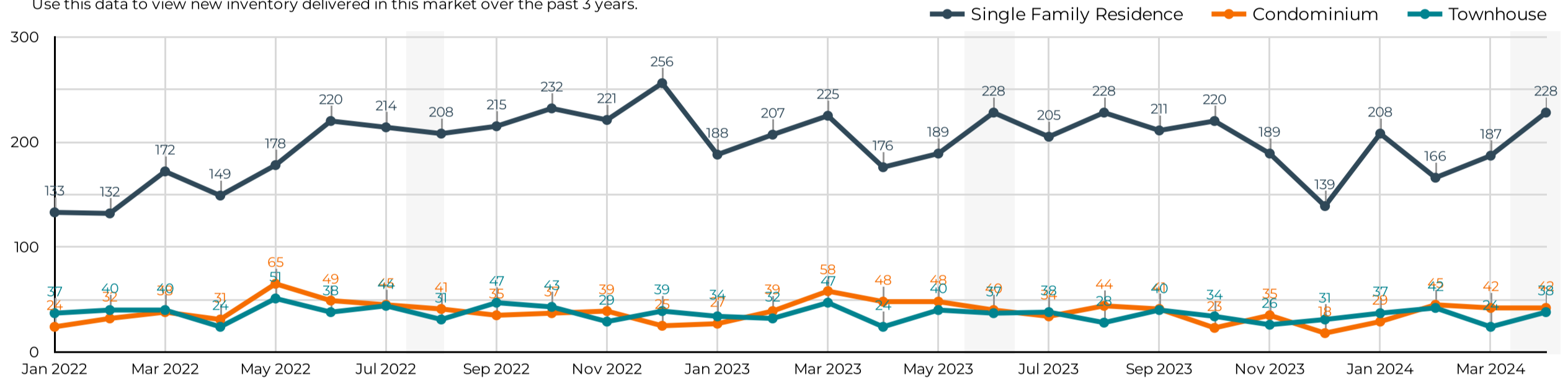
Active Listings Now
631

Active Now



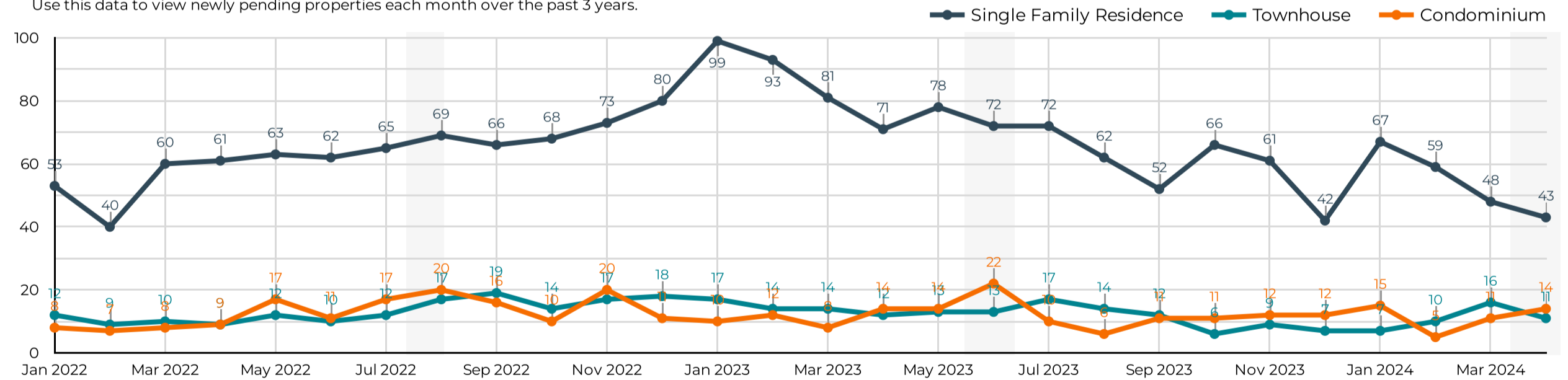
New Rental Listings

Use this data to view new inventory delivered in this market over the past 3 years.



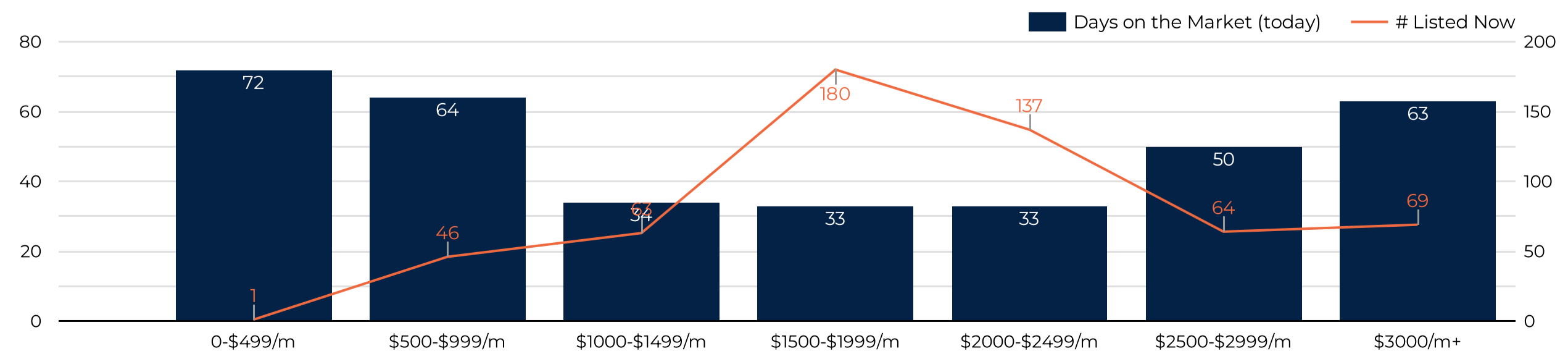
New Pending Leases

Use this data to view newly pending properties each month over the past 3 years.



Active Listings Now

Use this data to see how long current listings are on the market now at each price range.



Southern AZ Rental Housing Market

All data is updated in realtime in accordance with content from MLSSAZ.
This report provides a snapshot of the market as taken on: May 7, 2024

Region City Zip Code

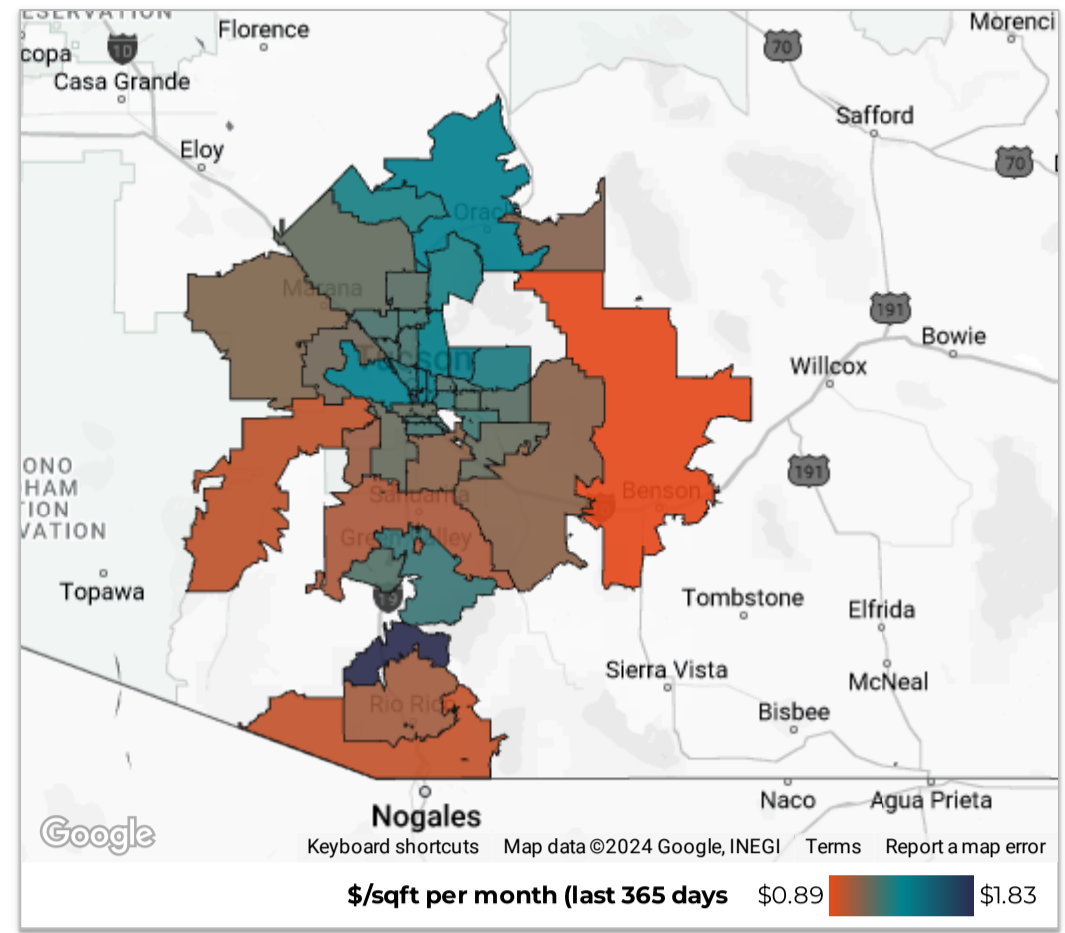
County Type Beds

Price Range Between and

Year-to-Date Statistics
2024

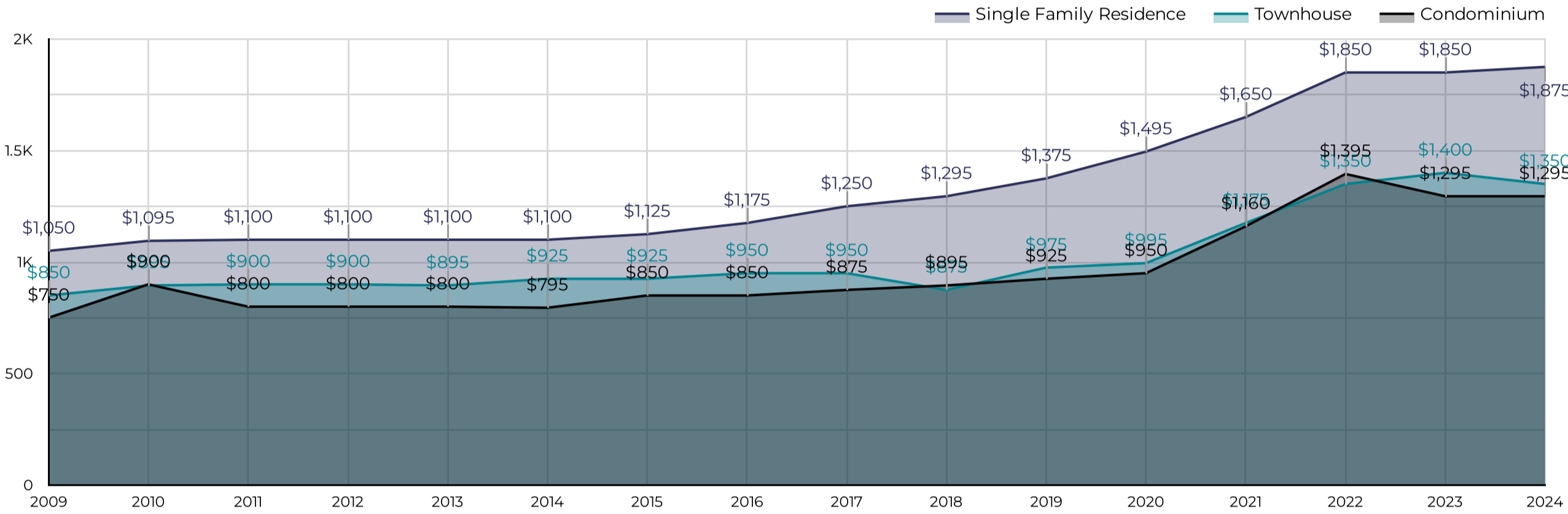


# of Leases 814 -17.9% from Jan 1, 2023 - May 8, 2023	Total Monthly Volume \$1.51M -17.1% from Jan 1, 2023 - May 8, 2023	Median Lease (\$/month) \$1,795 2.6% from Jan 1, 2023 - May 8, 2023
New Listings 1,181 -3.4% from Jan 1, 2023 - May 8, 2023	Median Days on Market 28 -3 from Jan 1, 2023 - May 8, 2023	% Over or Under Asking -0.2% -1.2% from Jan 1, 2023 - May 8, 2023

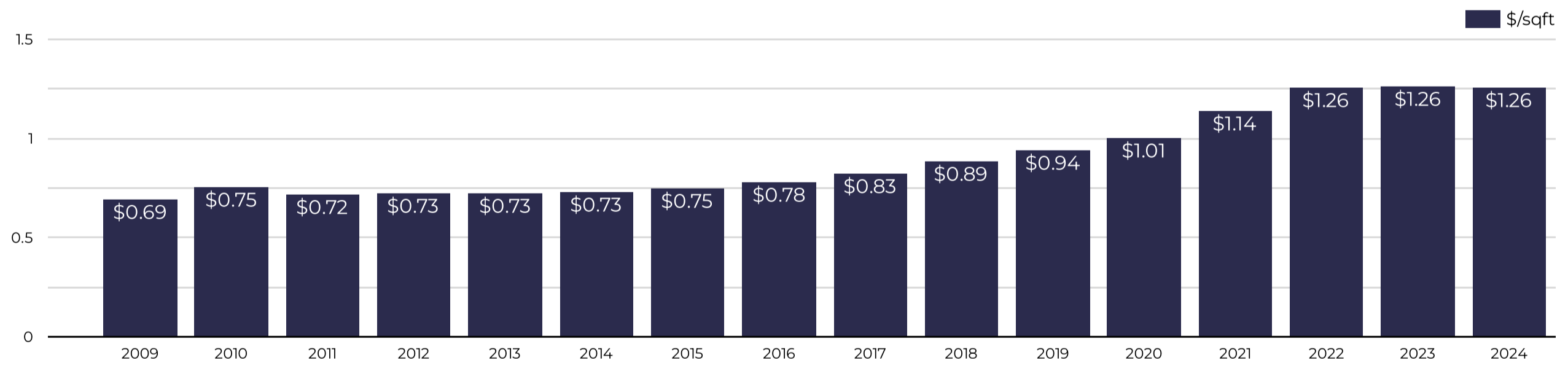


Median Rental Price/Month

Jan 1, 2009 - May 7, 2024

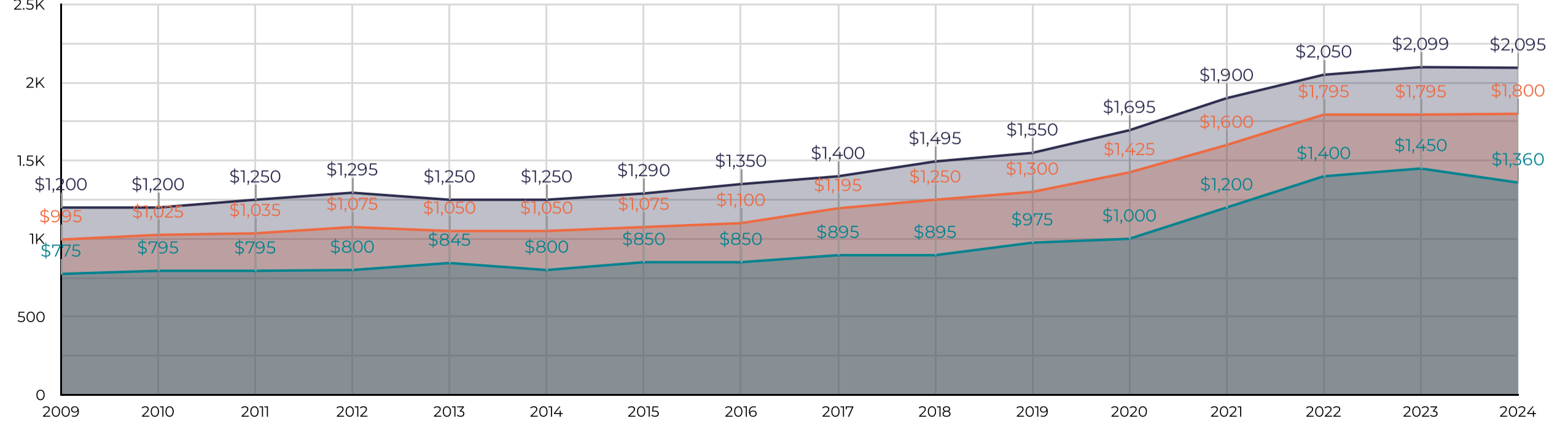


\$/Square Foot per Month



Median Lease By Bedrooms

Beds (compare up to 3)



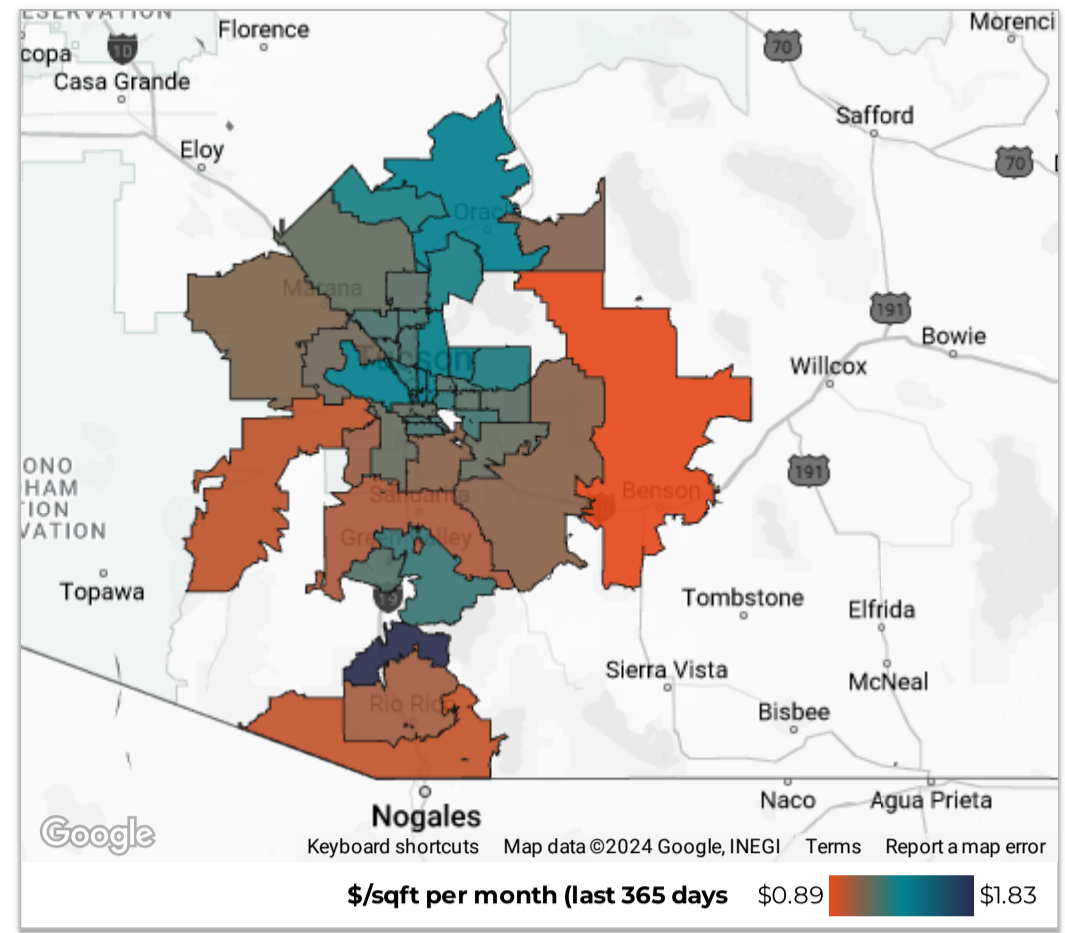
Southern AZ Rental Housing Market

All data is updated in realtime in accordance with content from MLSSAZ. This report provides a snapshot of the market as taken on: May 7, 2024

Region City Zip Code

County Type Beds

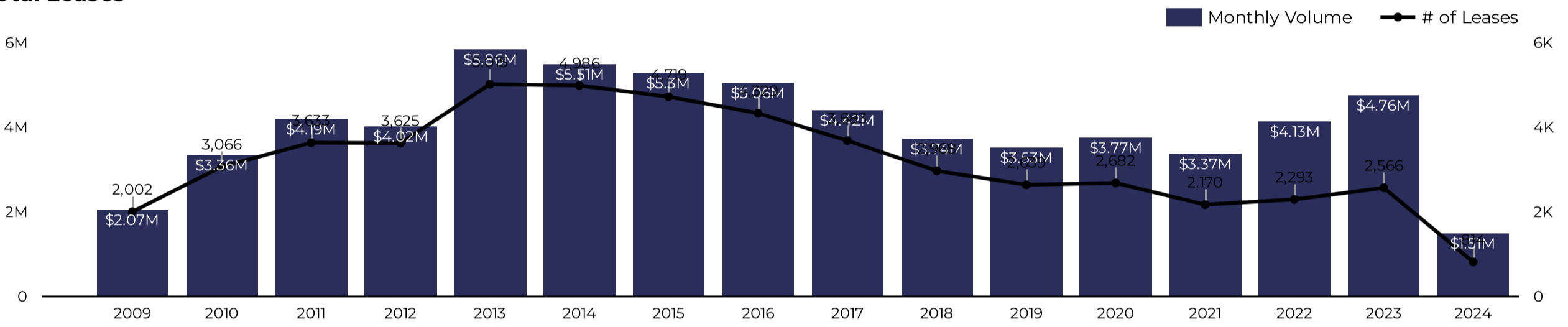
Price Range Between and



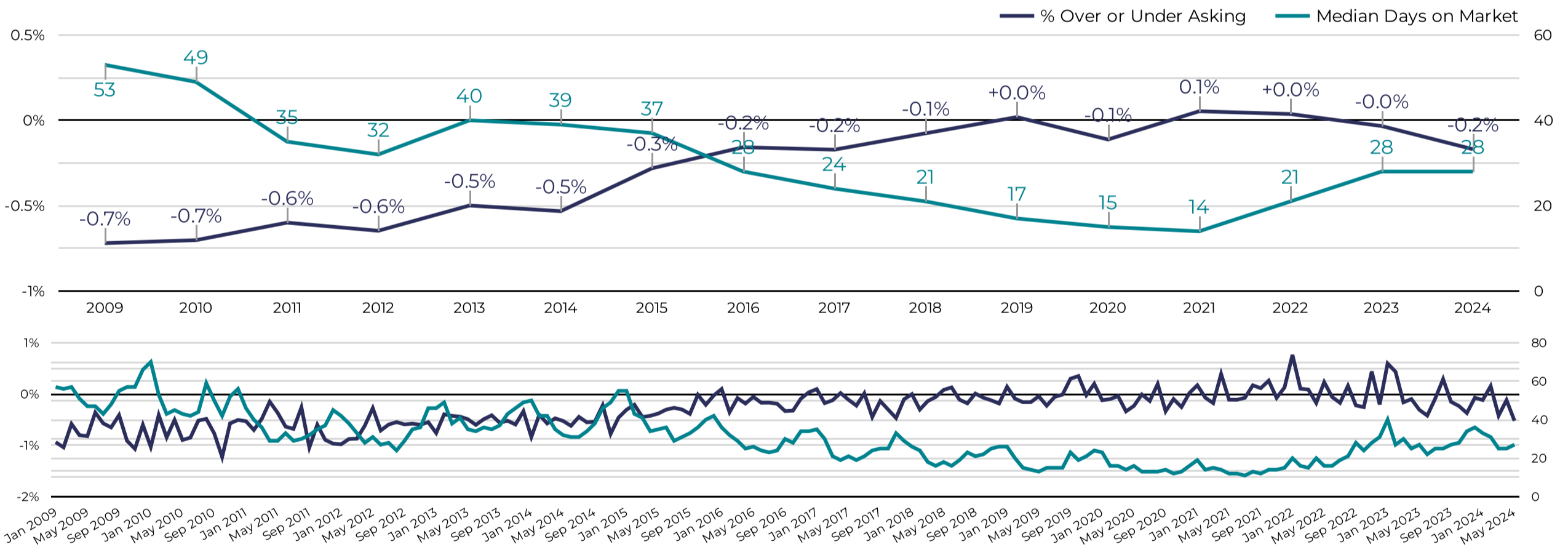
Year-to-Date Statistics 2024

# of Leases 814 -17.9% from Jan 1, 2023 - May 8, 2023	Total Volume \$1.51M -17.1% from Jan 1, 2023 - May 8, 2023	Median Lease (\$/month) \$1,795 2.6% from Jan 1, 2023 - May 8, 2023
New Listings 1,181 -3.4% from Jan 1, 2023 - May 8, 2023	Median Days on Market 28 -3 from Jan 1, 2023 - May 8, 2023	% Over or Under Asking -0.2% -1.2% from Jan 1, 2023 - May 8, 2023

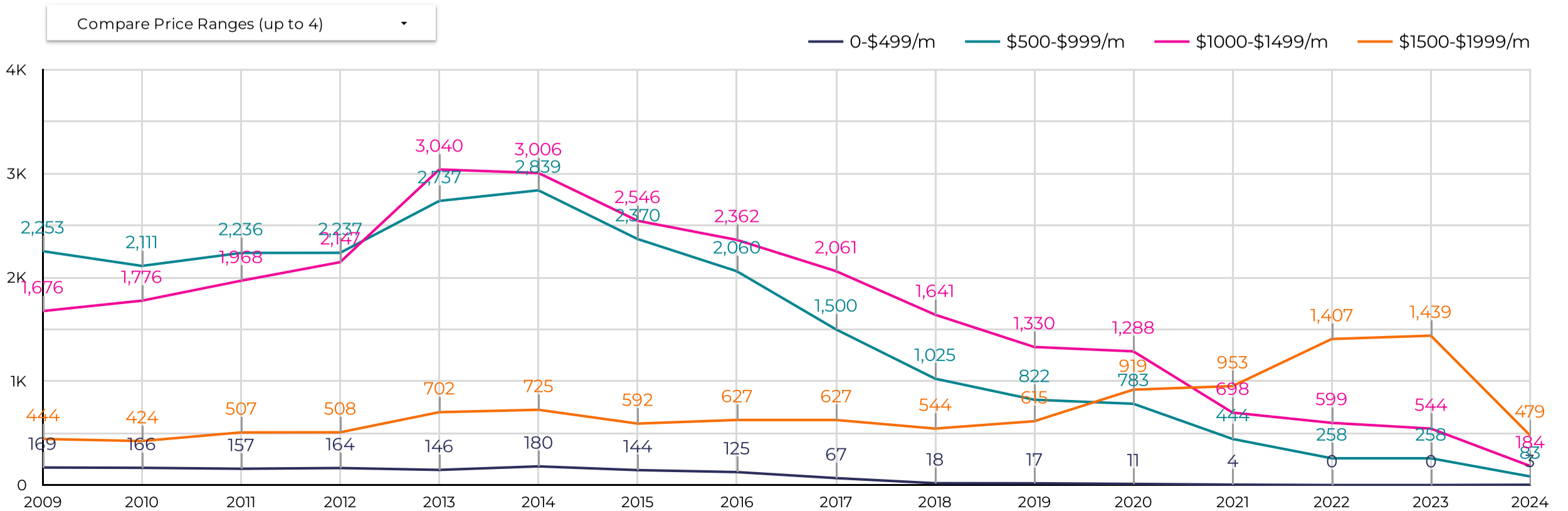
Total Leases



Renter Demand



New Rental Listings Delivered



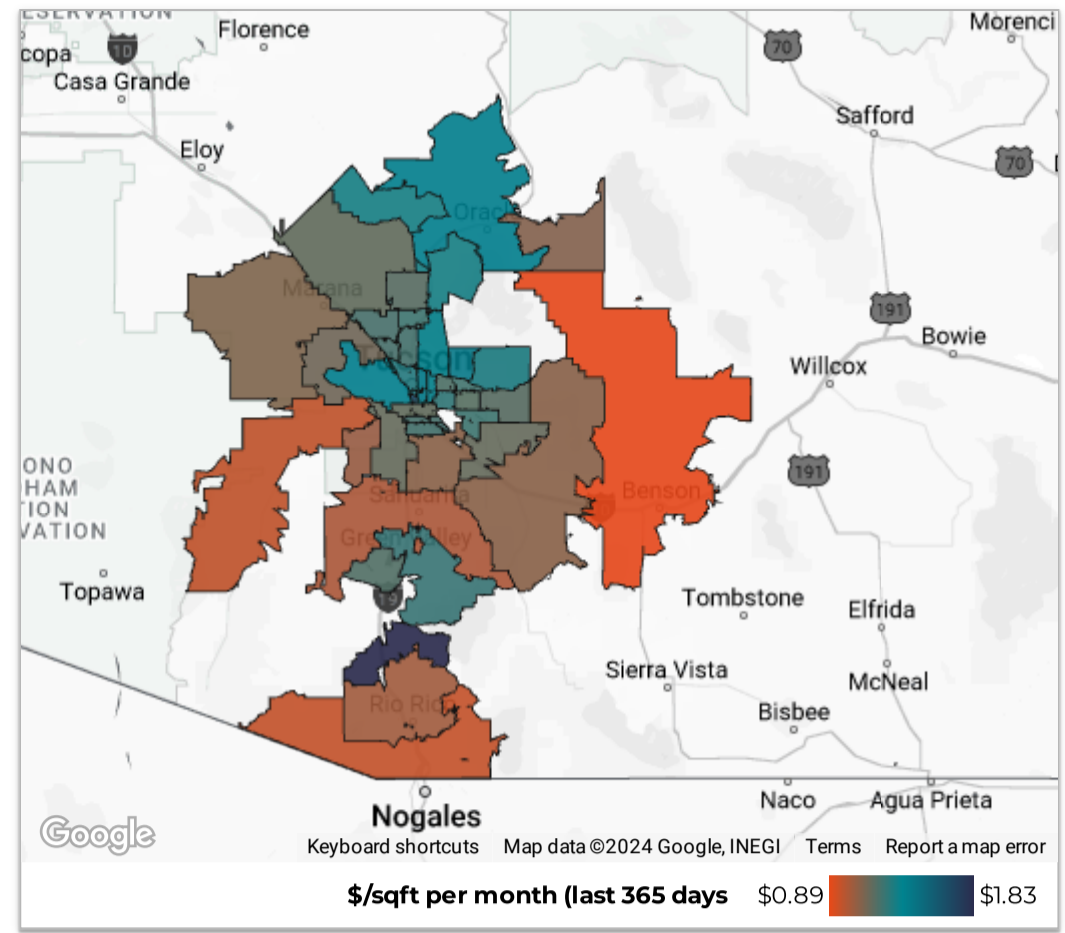
Southern AZ Rental Housing Market

All data is updated in realtime in accordance with content from MLSSAZ.
This report provides a snapshot of the market as taken on: May 7, 2024

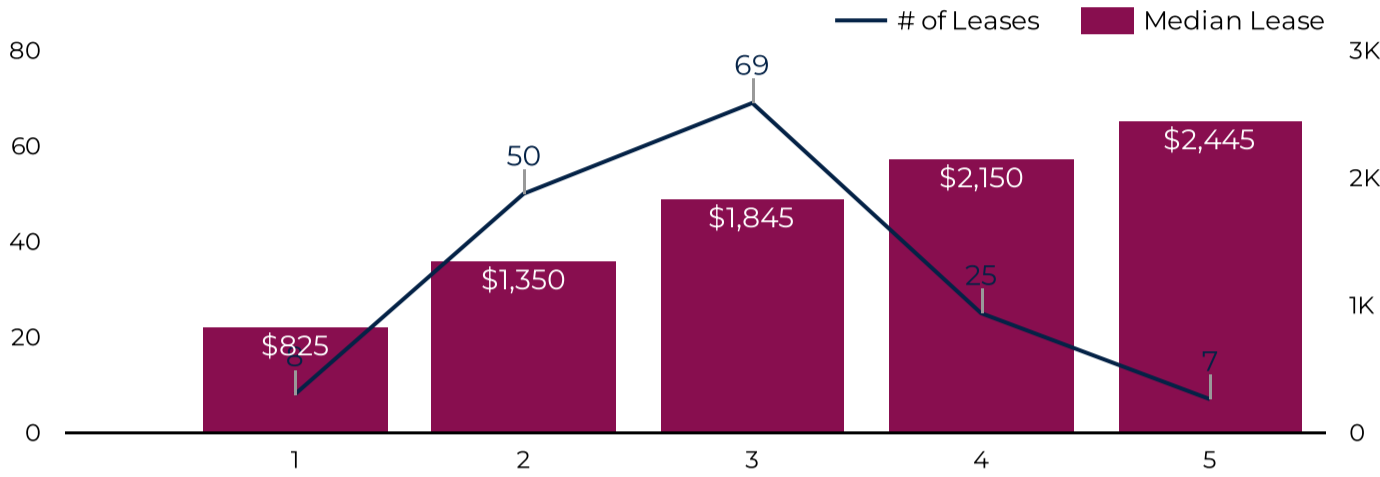
Region City Zip Code
 County Type Beds
 Price Range Between and

April

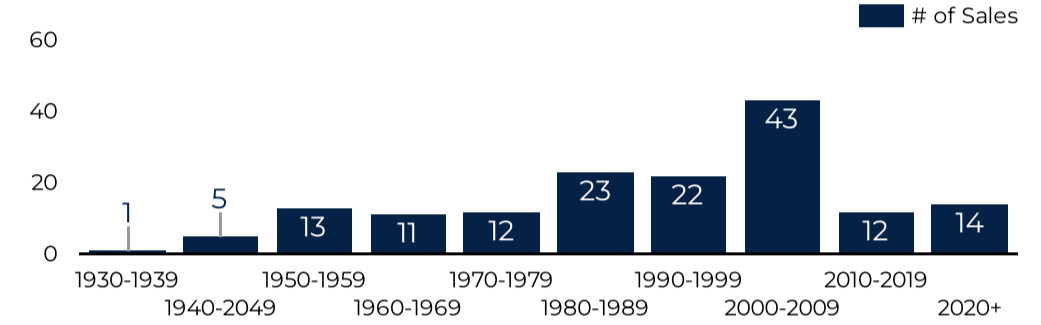
of Leases: **161** (-22.2% from previous year)
 Total Monthly Rental Volume: **\$290.87K** (-23.9% from previous year)
 Average SqFt: **1,516**
 Median Year Built: **1,996**



Median Lease Price By Bedrooms



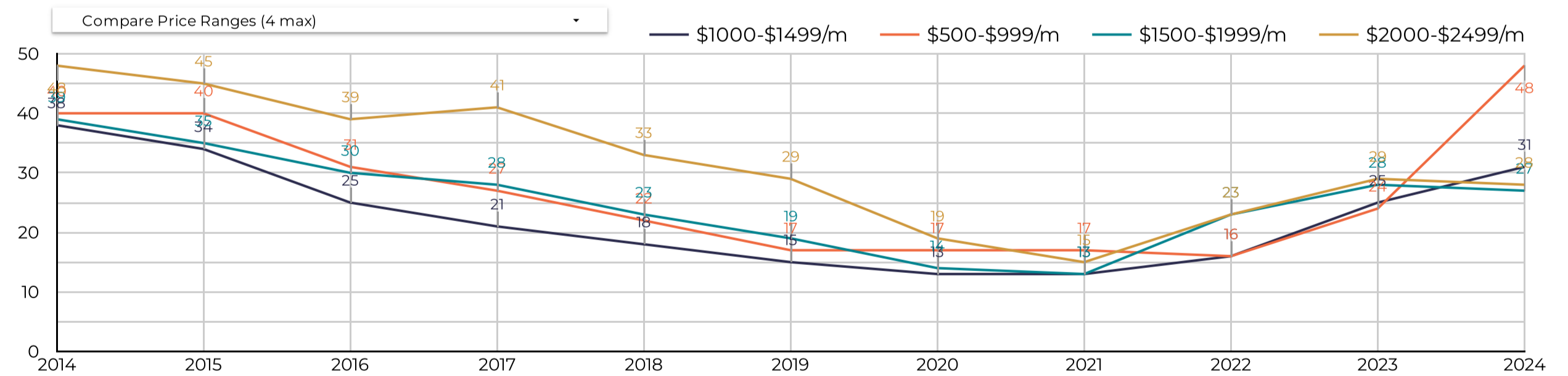
Leases By Property Age



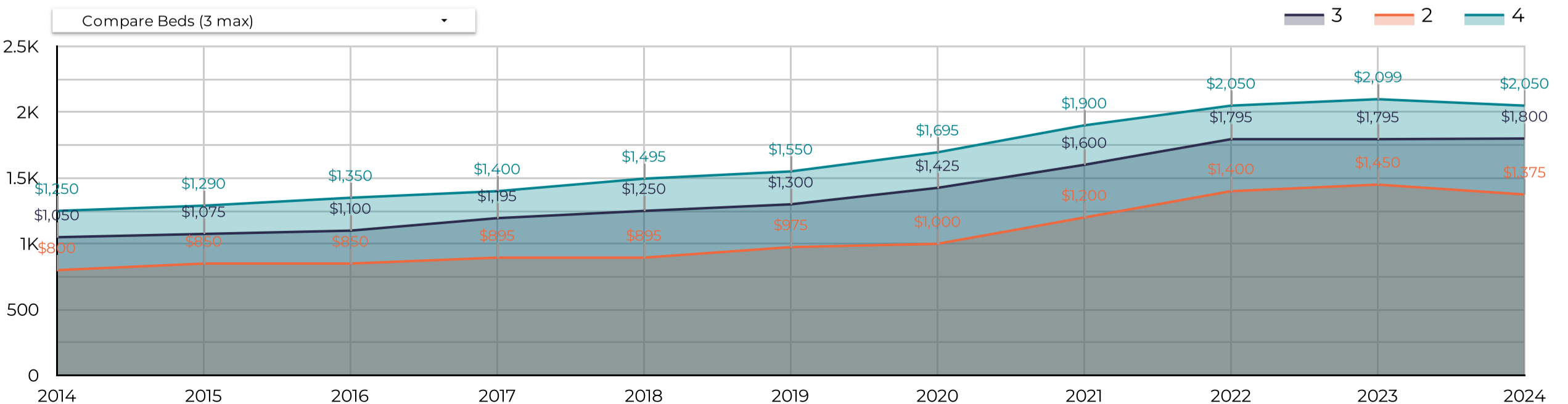
Data By Price Range

Price Range	# of Leases	0-2 Beds	3 Beds	4+ Beds	Median DOM	% Over or Under Asking
0-\$499/m	1	1	0	0	20	0%
\$500-\$999/m	12	12	0	0	14	0%
\$1000-\$1499/m	32	29	2	1	27	-0.81%
\$1500-\$1999/m	74	13	48	13	24	-1.12%
\$2000-\$2499/m	25	3	12	10	21	0.91%
\$2500-\$2999/m	11	2	6	3	25	1.82%
Grand total	161	60	69	32	25	-0.41%

Median Days on Market



Median Rental Price/Month



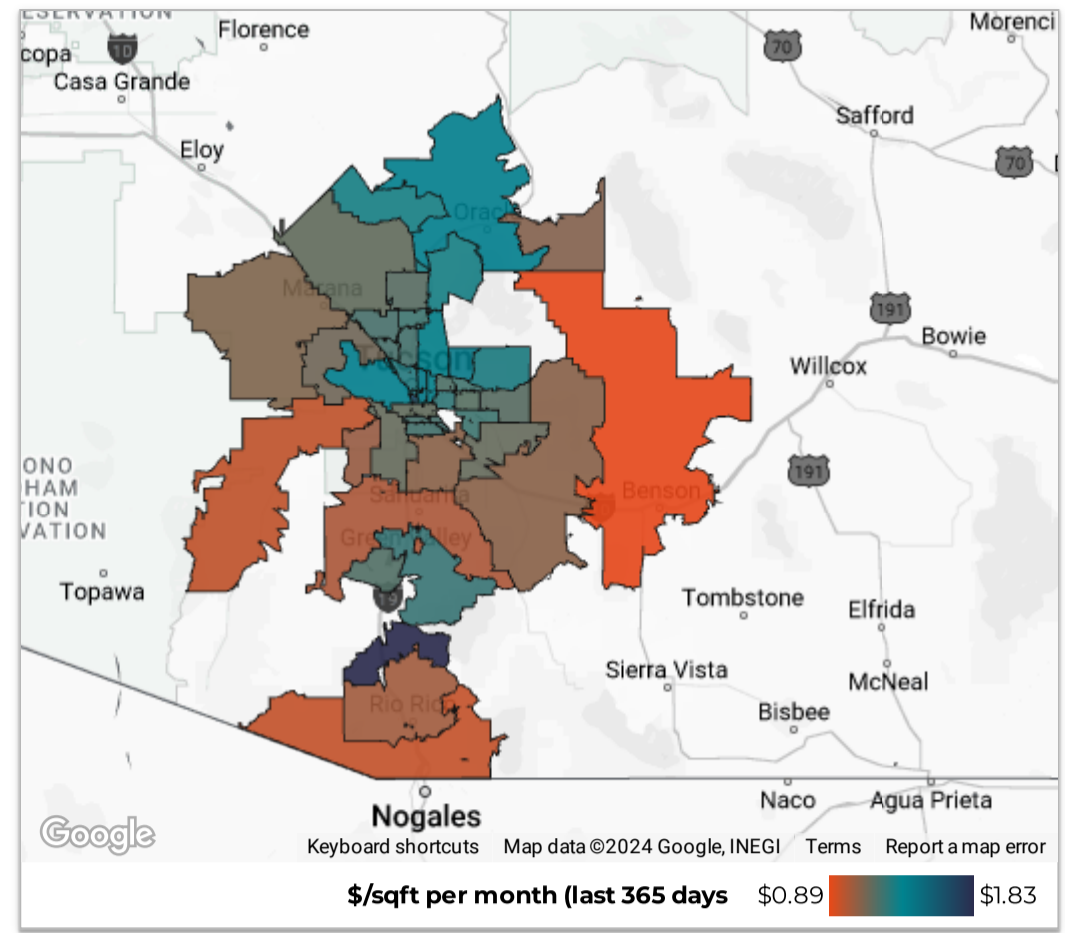
Southern AZ Rental Housing Market

All data is updated in realtime in accordance with content from MLSSAZ. This report provides a snapshot of the market as taken on: May 7, 2024

Region City Zip Code

County Type Beds

Price Range Between and



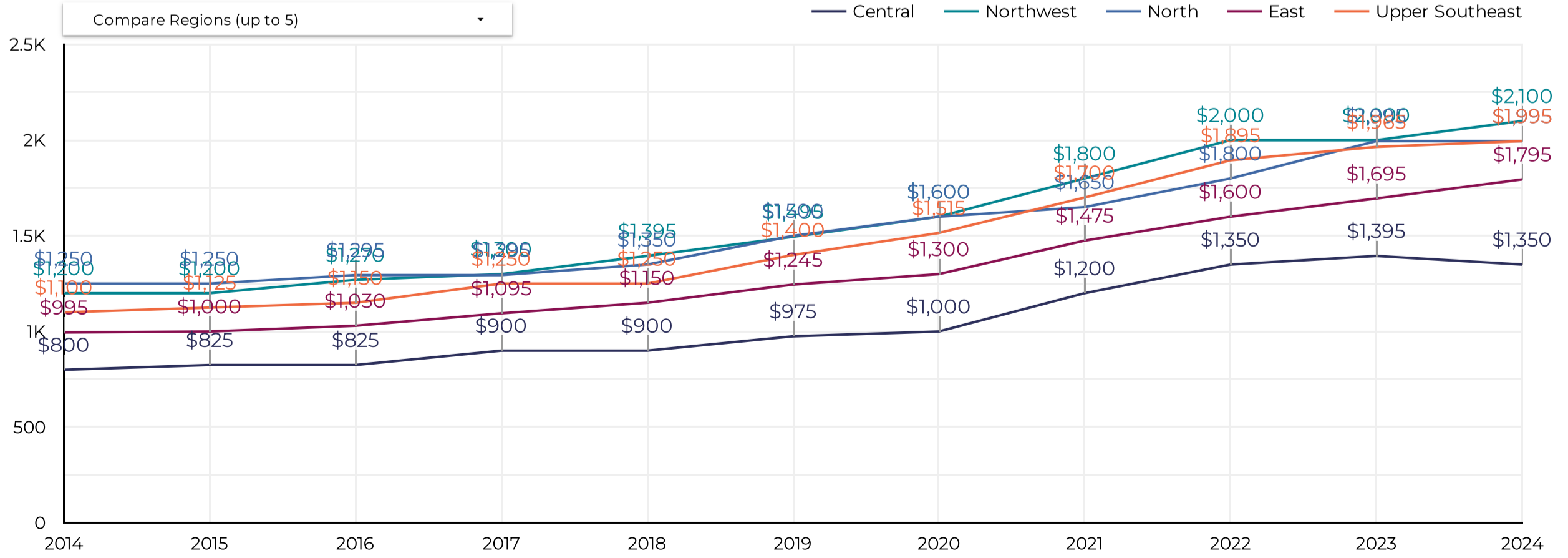
Apr 2024 vs. last year

Use this table to compare MLSSAZ regions year-over-year in your selected area on a range of metrics.

Market Activity				Market Pricing				Renter Demand				
Region	# of Leases	% Δ	Volume	% Δ	Median Lease	Δ	\$/sqft	Δ	Median DOM	Δ	% Over	Δ
1. Central	41	-10.9%	\$58.09K	-7.7%	\$1,350	\$150	\$1.36	\$0.07	42	20	1.1%	1.4%
2. Upper Southeast	19	0.0%	\$38.4K	0.4%	\$1,995	\$100	\$1.18	\$0.03	23	-15	0.2%	-0.4%
3. Northwest	18	-47.1%	\$41.32K	-50.2%	\$2,275	\$125	\$1.24	\$0.01	15	-2	-0.6%	-0.8%
4. North	16	-20.0%	\$35.97K	-14.3%	\$1,800	-\$100	\$1.33	-\$0.03	11	-5	-0.3%	-0.6%
5. East	16	-15.8%	\$26.35K	-15.3%	\$1,725	\$80	\$1.15	-\$0.05	16	-20	0.1%	0.2%
6. South	9	-18.2%	\$15.4K	-14.2%	\$1,745	\$45	\$1.12	-\$0.02	21	-7	-3.0%	-2.8%
7. West	8	-27.3%	\$13.19K	-31.2%	\$1,500	-\$295	\$1.39	\$0.20	31	11	0.0%	1.2%
8. Southwest	7	-56.3%	\$15.29K	-43.9%	\$1,995	\$300	\$1.17	-\$0.07	17	-24	-0.7%	-0.4%
9. Green Valley North	5	66.7%	\$9.08K	81.8%	\$1,820	-\$30	\$1.13	\$0.24	28	-51	-2.9%	-2.9%
10. Extended West	5	25.0%	\$9.19K	-0.3%	\$1,795	-\$355	\$1.06	-\$0.02	54	35	0.0%	1.7%
11. Upper Northwest	4	-20.0%	\$9.87K	-12.6%	\$2,500	\$200	\$1.38	-\$0.02	40	-17	-2.4%	-2.4%
12. Southeast	2	-50.0%	\$3.4K	-56.5%	\$1,650	-\$45	\$1.23	\$0.16	35	18	0.0%	0.0%
13. Northeast	2	-50.0%	\$3.5K	-43.9%	\$1,000	-\$100	\$1.38	\$0.20	26	19	0.0%	1.7%
14. Green Valley Nort...	1	-	\$1.1K	-	\$1,100	-	\$1.67	-	27	-	0.0%	-
15. Green Valley Sout...	1	-	\$1.4K	-	\$1,399	-	\$1.20	-	58	-	0.0%	-
16. Pinal	1	-50.0%	\$950	-59.6%	\$950	-\$150	\$1.10	\$0.07	5	-13	0.0%	0.0%
17. Green Valley Nort...	1	-75.0%	\$1.85K	-76.5%	\$1,845	-\$50	\$0.88	-\$0.24	35	18	0.0%	0.7%
18. SCC-Rio Rico East	1	0.0%	\$1.7K	-22.7%	\$1,700	-\$500	\$1.26	-\$0.24	14	1	0.0%	0.0%
19. Green Valley Sout...	1	-	\$1.55K	-	\$1,550	-	\$1.40	-	55	-	0.0%	-
20. Graham	1	-	\$1.55K	-	\$1,550	-	\$1.02	-	7	-	0.0%	-
21. Benson/St. David	1	-	\$500	-	\$500	-	\$0.89	-	13	-	0.0%	-

1 - 21/21 < >

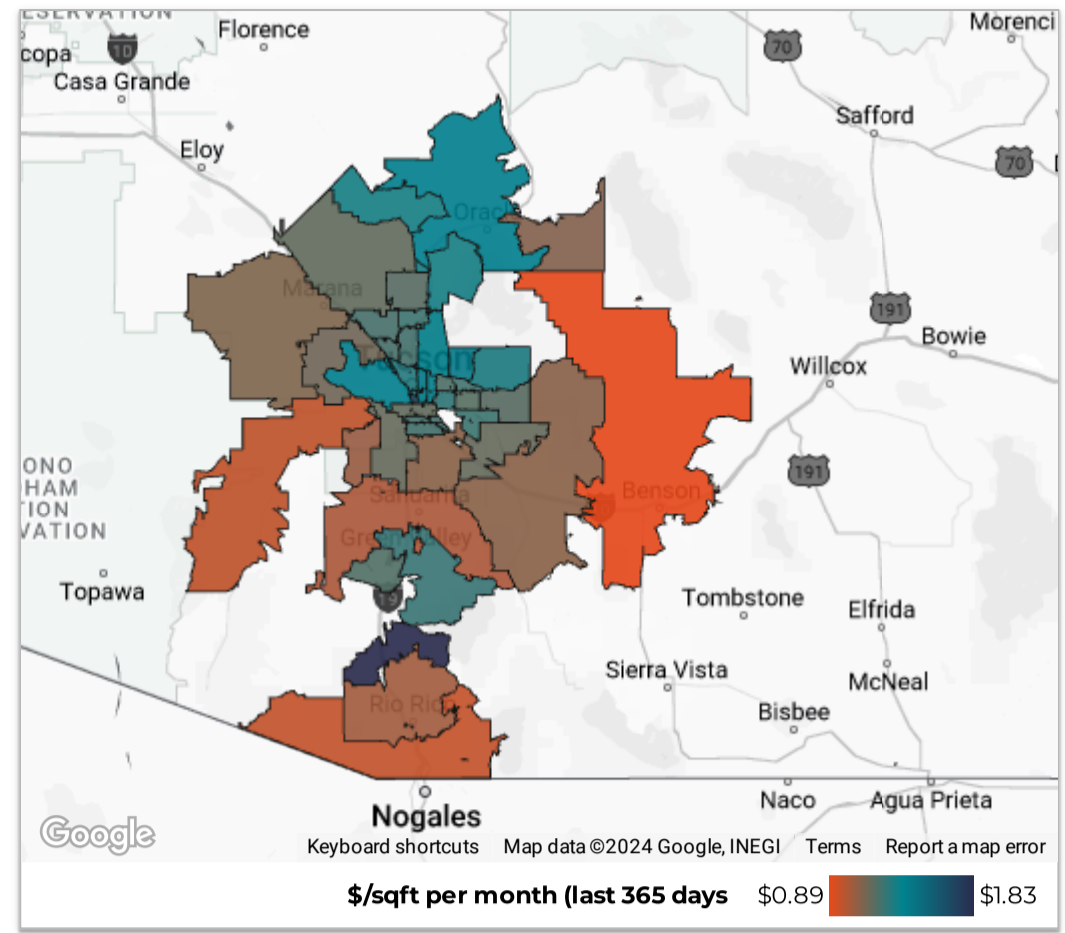
Median Lease by Region



Southern AZ Rental Housing Market

All data is updated in realtime in accordance with content from MLSSAZ. This report provides a snapshot of the market as taken on: May 7, 2024

Region City Zip Code
 County Type Beds
 Price Range Between Enter a value and Enter a value Download



Apr 2024 vs. last year

Use this table to compare zip codes year-over-year in your selected area on a range of metrics.

Market Activity					Market Pricing				Renter Demand			
Zip Code	# of Leases	% Δ	Volume	% Δ	Median Lease	Δ	\$/sqft	Δ	Median DOM	Δ	% Over	Δ
1. 85710	13	44.4%	\$20,888	39.9%	\$1,700	-\$45	\$1.15	\$0.02	18	-4	0.6%	0.6%
2. 85719	12	33.3%	\$18,125	42.0%	\$1,345	\$50	\$1.45	-\$0.08	42	25	0.0%	-1.6%
3. 85747	11	-8.3%	\$21,954	-4.7%	\$1,895	\$50	\$1.20	\$0.03	21	0	0.4%	-0.1%
4. 85716	11	-15.4%	\$13,815	-20.9%	\$1,295	-\$5	\$1.31	\$0.10	25	-23	+0.0%	0.6%
5. 85641	8	-11.1%	\$16,726	-13.2%	\$1,995	-\$205	\$1.15	\$0.04	23	-20	0.0%	-0.7%
6. 85750	8	14.3%	\$19,900	38.9%	\$2,000	\$100	\$1.38	\$0.02	11	-5	0.1%	0.1%
7. 85712	7	-46.2%	\$8,615	-58.3%	\$1,200	-\$250	\$1.23	\$0.03	25	3	0.0%	1.3%
8. 85745	7	600.0%	\$11,290	1,311.3%	\$1,500	\$700	\$1.40	-\$0.20	38	18	0.0%	0.0%
9. 85629	6	20.0%	\$10,925	18.8%	\$1,820	-\$30	\$1.09	\$0.17	28	-11	-2.4%	-2.4%
10. 85705	6	-14.3%	\$8,785	25.5%	\$1,150	\$200	\$1.50	\$0.24	31	9	4.7%	4.7%
11. 85706	6	500.0%	\$9,928	453.1%	\$1,745	-\$50	\$1.10	-\$0.07	40	-46	-3.8%	-3.8%
12. 85653	5	25.0%	\$9,185	-0.3%	\$1,795	-\$355	\$1.06	-\$0.02	54	35	0.0%	1.7%
13. 85704	5	-16.7%	\$9,875	-16.5%	\$1,800	-\$100	\$1.30	-\$0.04	4	-13	0.0%	-2.1%
14. 85711	5	66.7%	\$8,745	111.0%	\$1,600	\$105	\$1.26	\$0.04	42	31	3.7%	3.7%
15. 85755	4	-20.0%	\$11,195	-12.8%	\$2,550	\$0	\$1.17	-\$0.13	20	6	-2.2%	-2.6%
16. 85658	4	0.0%	\$8,670	-22.1%	\$2,275	\$425	\$1.14	-\$0.09	33	16	0.0%	0.0%
17. 85746	4	-60.0%	\$7,145	-58.0%	\$1,800	\$105	\$1.25	-\$0.01	12	-18	-1.3%	-0.7%
18. 85737	4	-50.0%	\$9,390	-57.9%	\$2,395	\$400	\$1.31	-\$0.00	13	-7	-0.4%	0.3%
19. 85718	4	-50.0%	\$8,945	-55.0%	\$1,450	-\$1,050	\$1.33	-\$0.06	19	3	-1.4%	-2.5%
20. 85756	4	-33.3%	\$7,440	-37.4%	\$1,750	\$5	\$1.18	\$0.11	17	-6	0.0%	0.0%
21. 85757	3	-40.0%	\$8,145	-9.8%	\$2,445	\$750	\$1.06	-\$0.15	21	-32	+0.0%	+0.0%
22. 85623	3	200.0%	\$8,000	247.8%	\$2,600	\$300	\$1.57	-\$0.07	40	-53	3.5%	3.5%
23. 85742	3	-62.5%	\$5,740	-67.5%	\$1,950	-\$50	\$1.18	\$0.02	48	33	0.0%	0.0%

1 - 37 / 37

Median Lease by Zip Code

