

**June  
2001**

<http://www.tarmls.com>

# MLS Month in Review

Tucson Association of REALTORS® Multiple Listing Service, Inc.

"The Voice for Real Estate" in Tucson, Arizona

1622 North Swan Road, Tucson, Arizona, 85712



For Immediate Release: **July 12, 2001**

Contact: Mike Waling, President, (520) 544-4477  
Gary E. Doran, Chief Executive Officer, (520) 327-4218

## June 2001 Residential Home Sales

The Tucson Association of REALTORS® Multiple Listing Service, Inc. reports that June 2001's 1175 existing home sales increased by 6% from the 1113 units sold in June, 2000, while total sales volume increased 4% from last year's \$182,714,011 to \$190,665,736. June's average sale price for all residential types shows a slight decrease of 1% to \$162,269 in 2001 from \$164,164 in 2000. The average sale price for Single Family Residences was \$176,354 in June, 2001 compared to \$177,573 in June, 2000. The median sale price, the price at which half the homes were sold above and below, rose by 4% from June 2000's \$124,000 to \$129,000 in June 2001.

Average days on market remained the same at 49 in June, 2001, and 49 in June, 2000, with 49% of all closed listings selling in the first 30 days on the market. Pending contracts, those transactions subject to contract, but not yet closed escrow, increased by 28% from 954 in June, 2000, to 1217 in June, 2001. The 4,179 active listings in June, 2001, were 8% over the 3,876 in June, 2000, and the 1,585 listings added during June, 2001, are 14% over the 1,392 added in June, 2000.

"The Tucson area residential housing market is setting a record pace through the first six months of 2001," said Mike Waling, President of the Tucson Association of REALTORS® Multiple Listing Service, Inc. "We have seen a 2.6% increase in total units sold and a 5% increase in total sales volume through June 2001 vs. June 2000." Mike continued, "If this trend in resale residential housing continues throughout 2001, it will be a record breaking year in both total units sold and total sales volume for the Tucson area."

**Check Us Out Online at:  
<http://www.tarmls.com>**

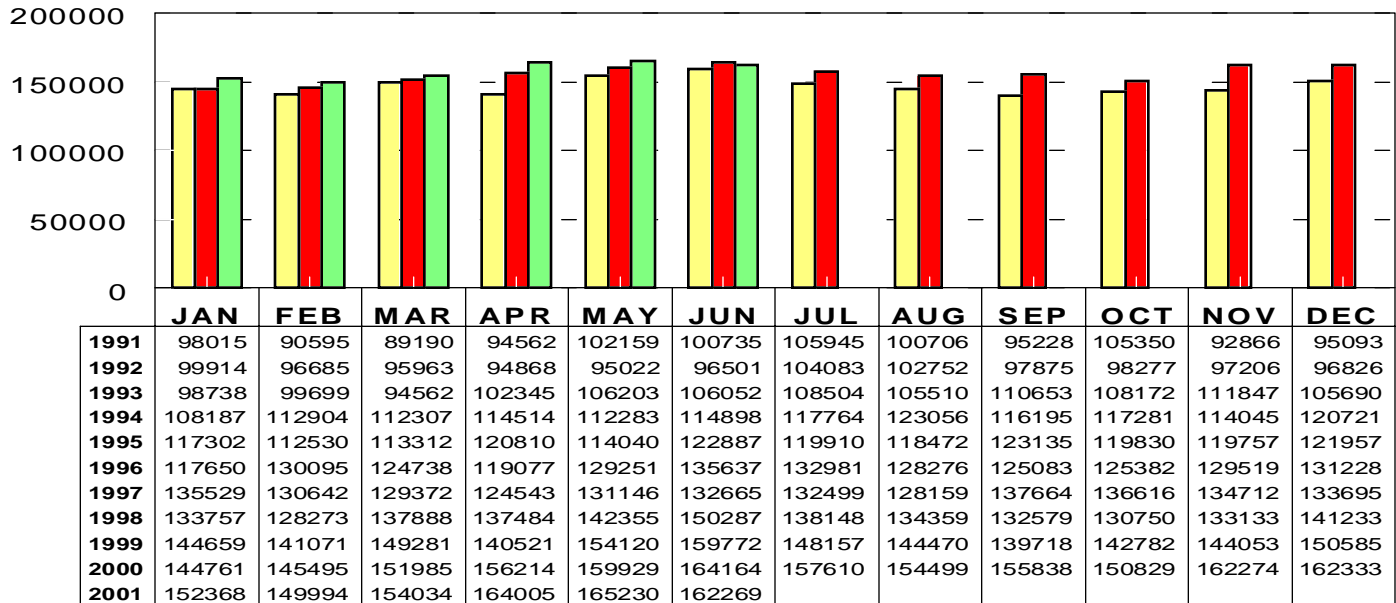
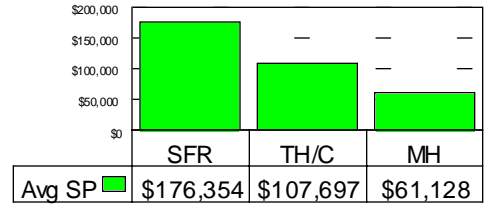
The Tucson Association of REALTORS® Multiple Listing Service, Inc. is a wholly owner subsidiary of the Tucson Association of REALTORS®. With more than 3,800 members, it is affiliated with the Arizona Association of REALTORS® and the National Association of REALTORS®. Only members of the Association can use the term REALTOR®. Its members provide professional real estate services to buyers and sellers and adhere to the organization's strict professional Code of Ethics.

# RESIDENTIAL STATISTICS

Including: Single Family, Townhouse, Condominium, Mobile Home, and New Construction

## Average Sale Price

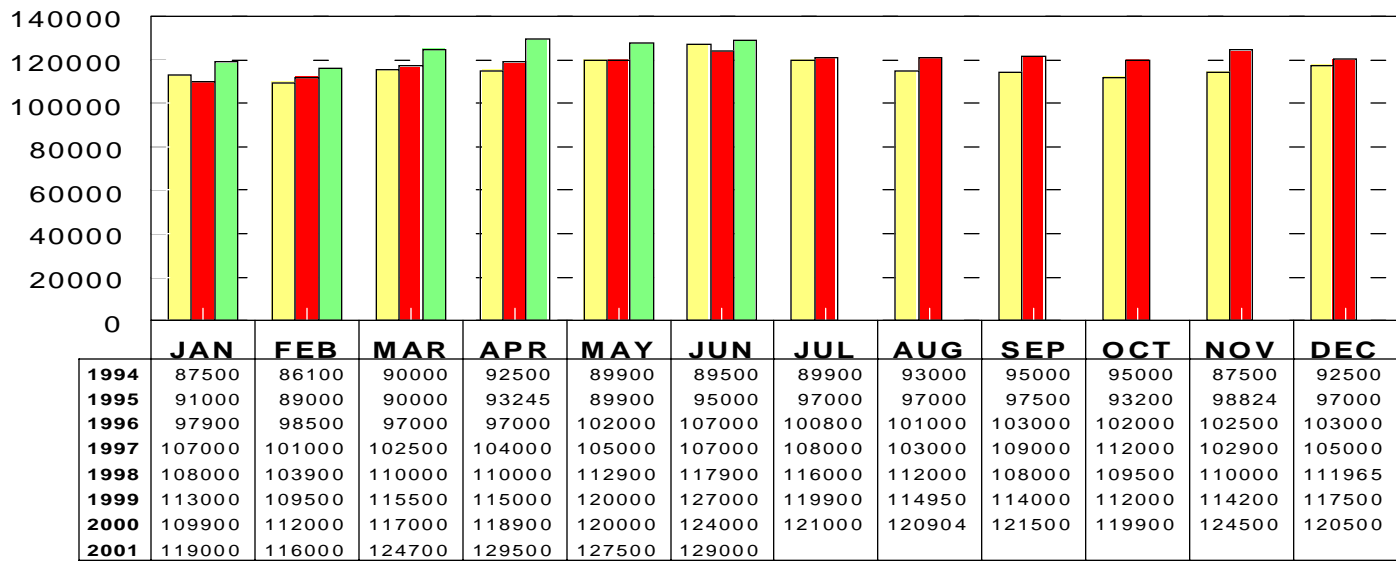
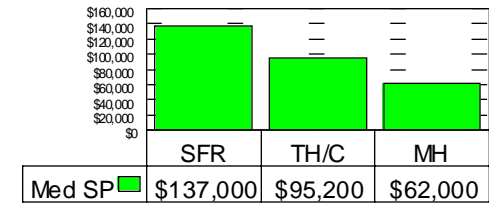
June 2001: \$162,269



1999 2000 2001

## Median Sale Price

June 2001: \$129,000



1999 2000 2001

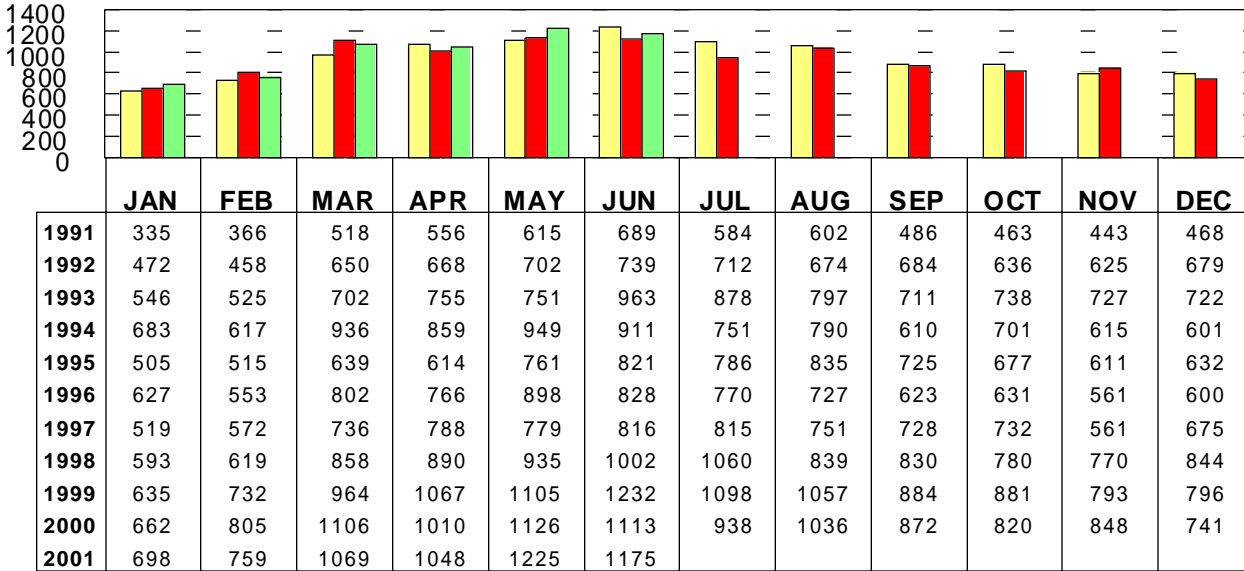
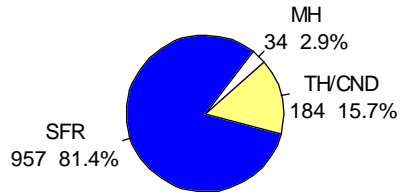
This representation is based in whole or in part on data supplied by the Tucson Association of REALTORS® or its Multiple Listing Service. Neither the Association nor its MLS guarantees or is in any way responsible for its accuracy. Data maintained by the Association or its MLS may not reflect all real estate activity in the market.

# RESIDENTIAL STATISTICS

Including: Single Family, Townhouse, Condominium, Mobile Home, and New Construction

## Total Unit Sales

June 2001: 1175 Units

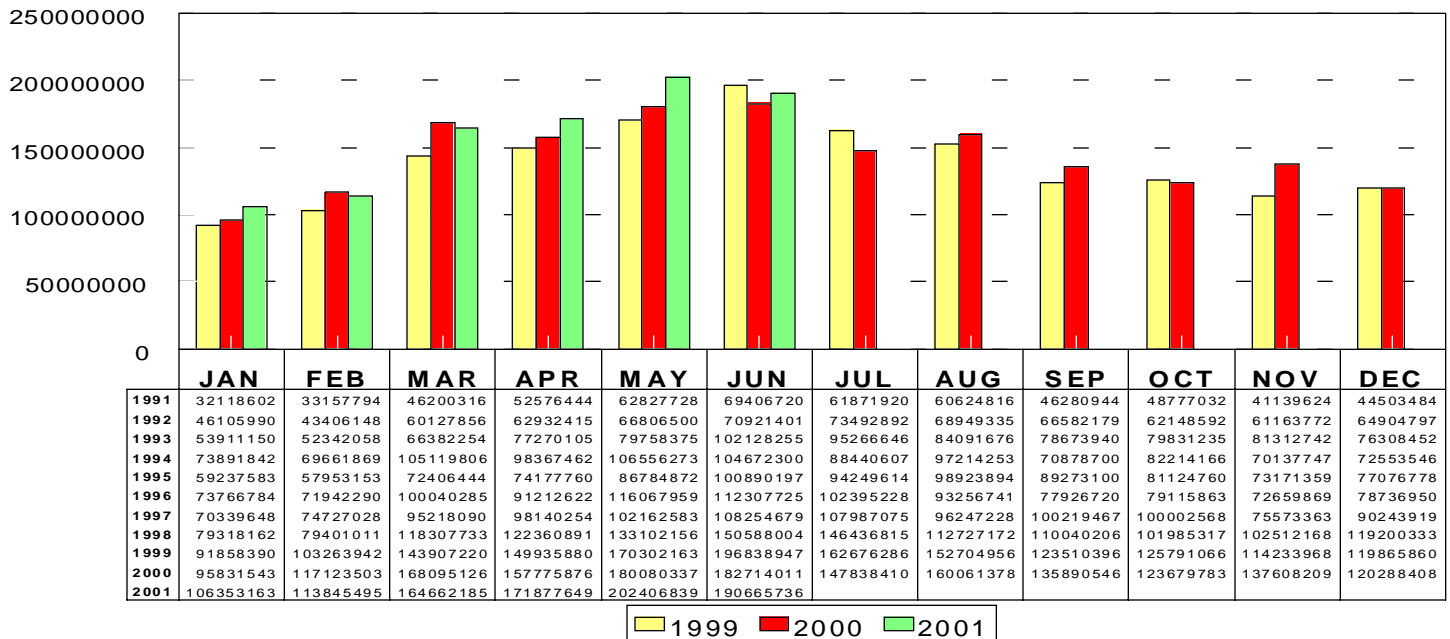
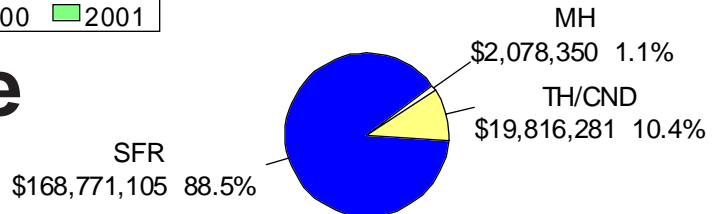


June 2001

Area	Sales
C	204
CCO	6
CPI	25
CSC	3
E	106
N	139
NE	91
NW	264
S	42
SE	107
SW	53
W	66
XNW	35
XS	10
XSE	5
XSW	5
XW	14

## Total Sales Volume

June 2001: \$190,665,736

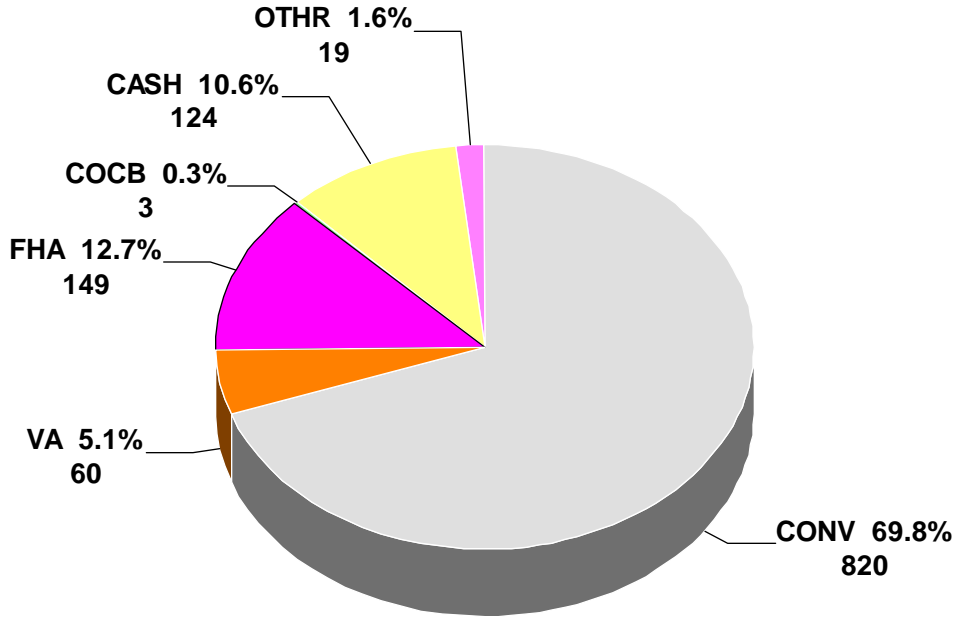


This representation is based in whole or in part on data supplied by the Tucson Association of REALTORS® or its Multiple Listing Service. Neither the Association nor its MLS guarantees or is in any way responsible for its accuracy. Data maintained by the Association or its MLS may not reflect all real estate activity in the market.

# RESIDENTIAL STATISTICS

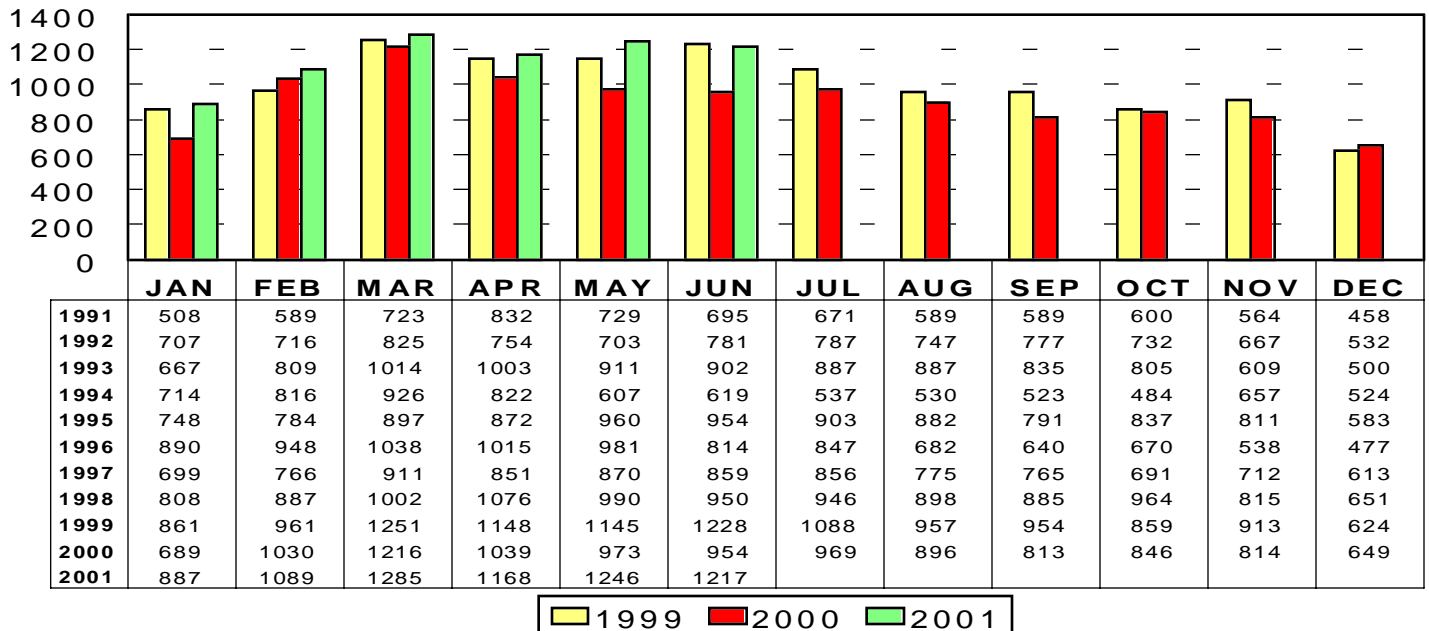
Including: Single Family, Townhouse, Condominium, Mobile Home, and New Construction

## Terms of Sale: June 2001



## Total Listings Under Contract Reported

June 2001: 1217



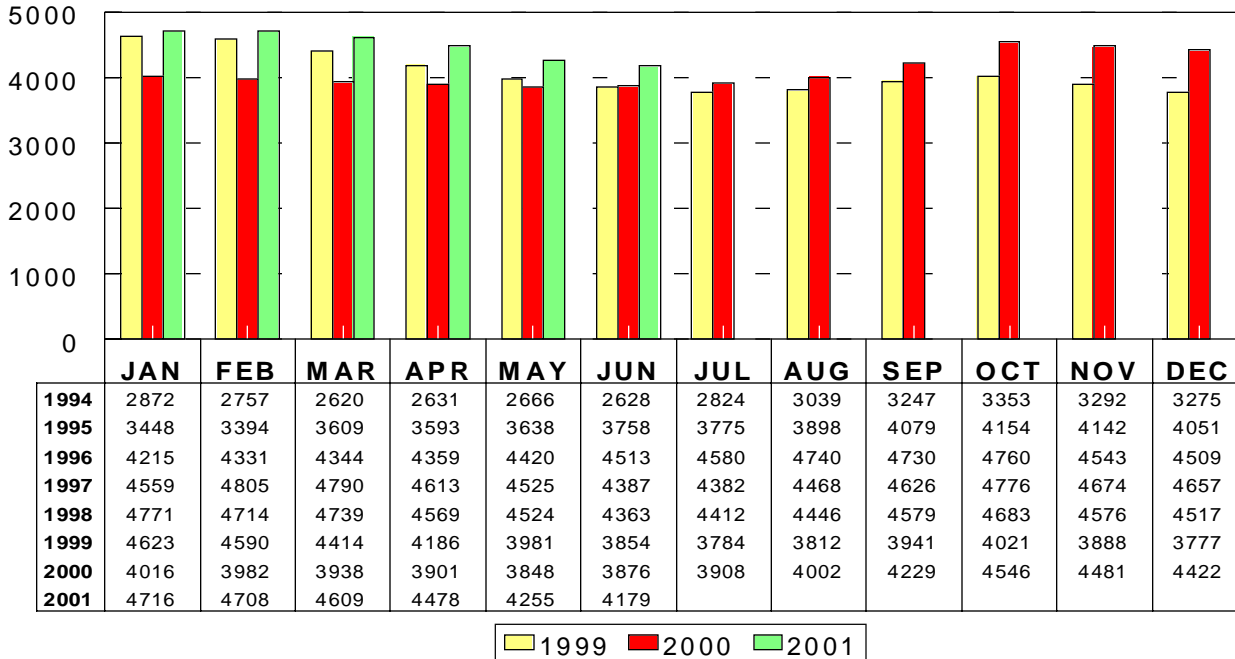
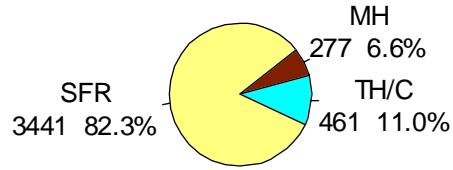
**\* Note: 1995 and forward data includes listings under contract that remained active on the market**

This representation is based in whole or in part on data supplied by the Tucson Association of REALTORS® or its Multiple Listing Service. Neither the Association nor its MLS guarantees or is in any way responsible for its accuracy. Data maintained by the Association or its MLS may not reflect all real estate activity in the market.

# RESIDENTIAL STATISTICS

Including: Single Family, Townhouse, Condominium, Mobile Home, and New Construction

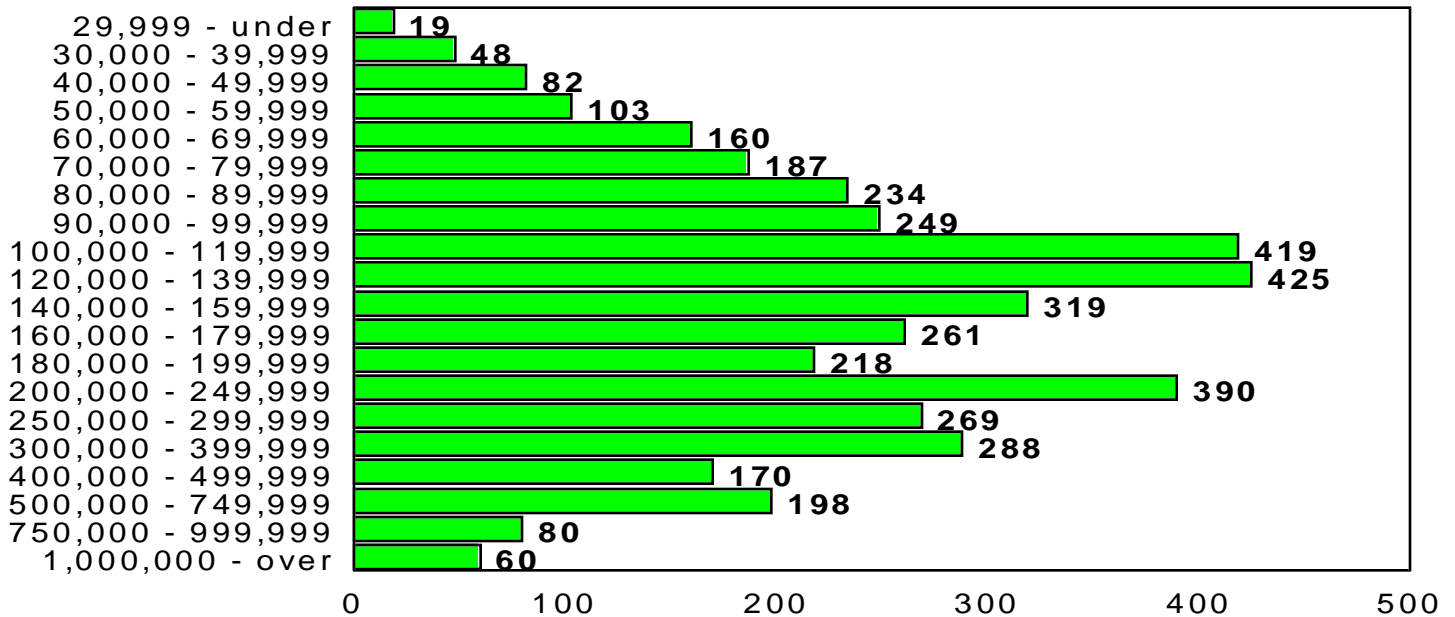
## Active Listings June 2001: 4179



### June 2001

Area	Listings
C	495
CCO	121
CGI	2
CGR	1
CMC	1
CPI	179
CSC	74
CYA	1
E	273
MEX	9
N	430
NE	333
NW	706
S	142
SE	219
SW	262
W	240
XNE	3
XNW	252
XS	90
XSE	51
XSW	109
XW	186

## Active Listing Price Breakdown June 2001: Average Price: \$224,781



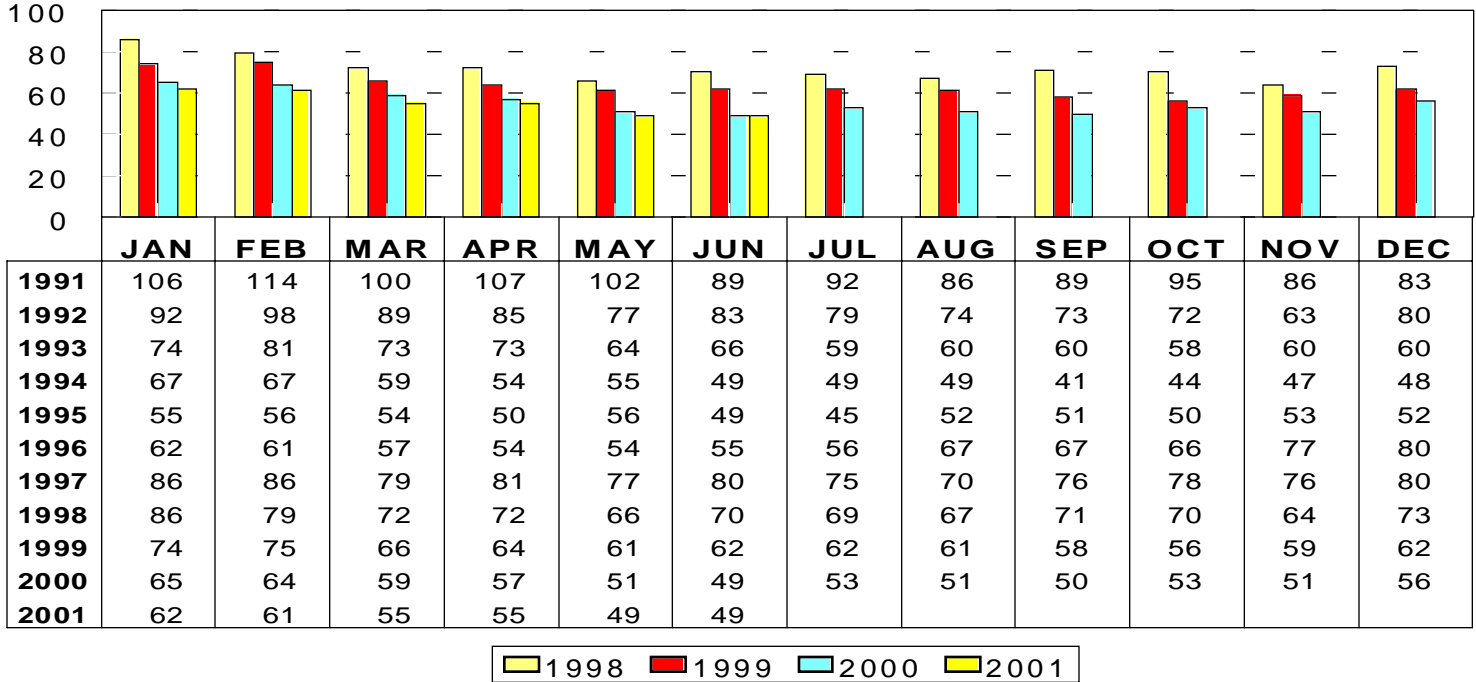
This representation is based in whole or in part on data supplied by the Tucson Association of REALTORS® or its Multiple Listing Service. Neither the Association nor its MLS guarantees or is in any way responsible for its accuracy. Data maintained by the Association or its MLS may not reflect all real estate activity in the market.

# RESIDENTIAL STATISTICS

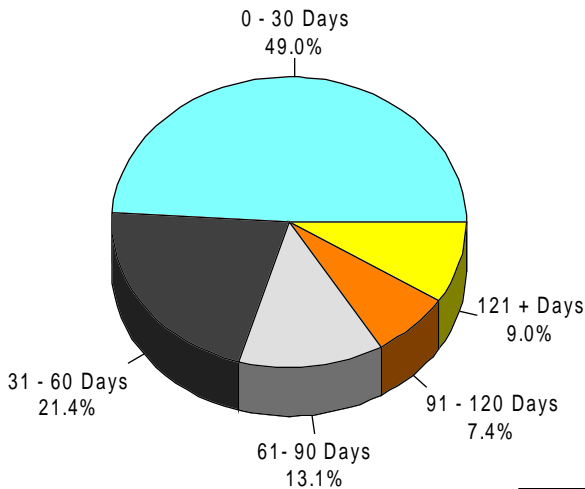
Including: Single Family, Townhouse, Condominium, Mobile Home, and New Construction

## Average Days on Market

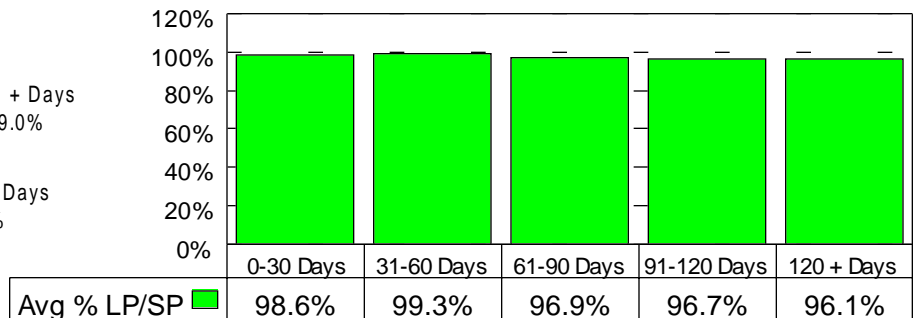
June 2001: 49 days



### June 2001 Average Days on Market Breakdown



### Average % of List Price Received on Solds by Market time - June 2001



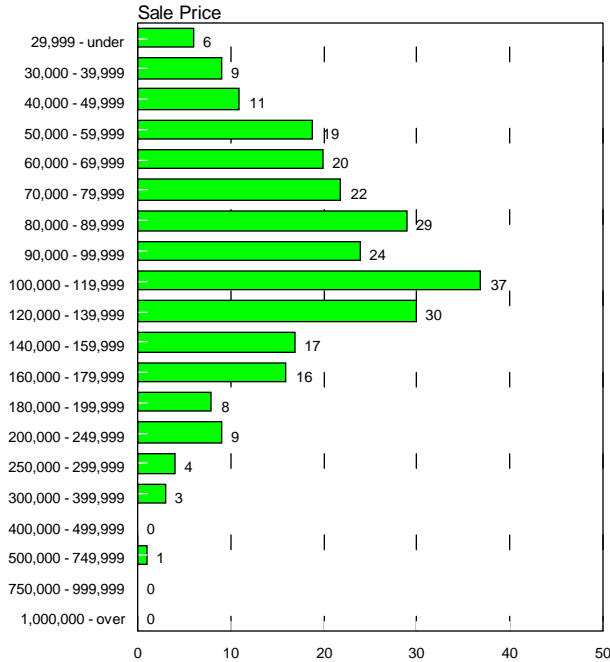
This representation is based in whole or in part on data supplied by the Tucson Association of REALTORS® or its Multiple Listing Service. Neither the Association nor its MLS guarantees or is in any way responsible for its accuracy. Data maintained by the Association or its MLS may not reflect all real estate activity in the market.

# RESIDENTIAL STATISTICS

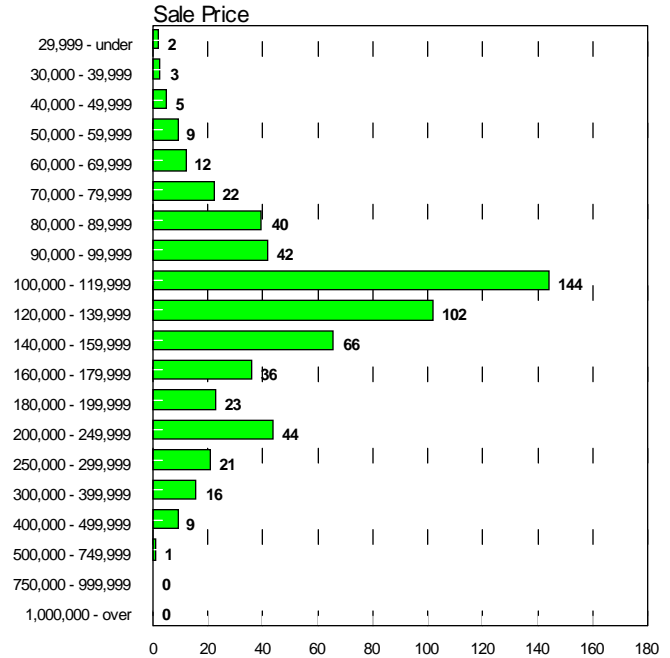
Including: Single Family, Townhouse, Condominium, Mobile Home, and New Construction

## Sales Price Breakdown by Bedrooms

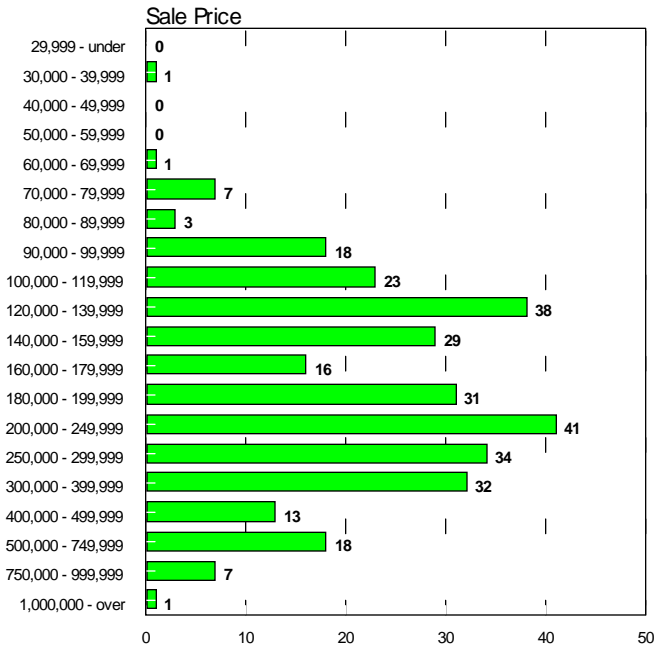
### 0 - 2 Bedrooms June 2001



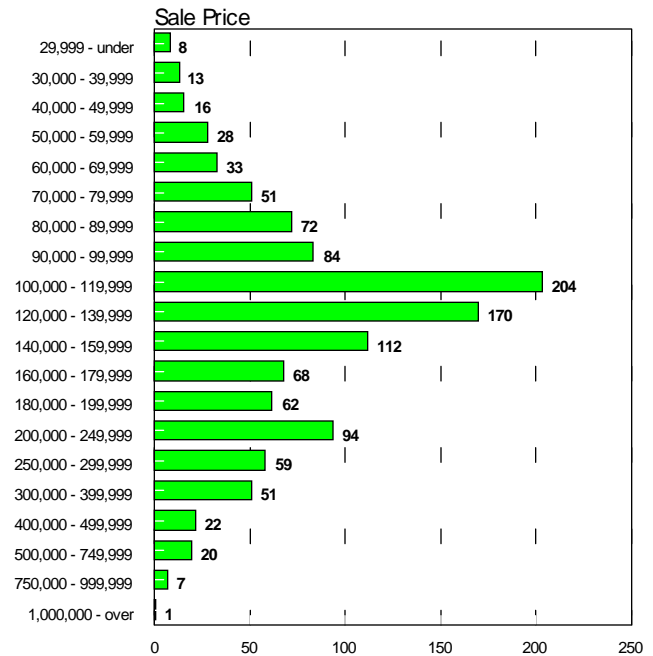
### 3 Bedrooms June 2001



### 4 + Bedrooms June 2001



### All Bedrooms June 2001



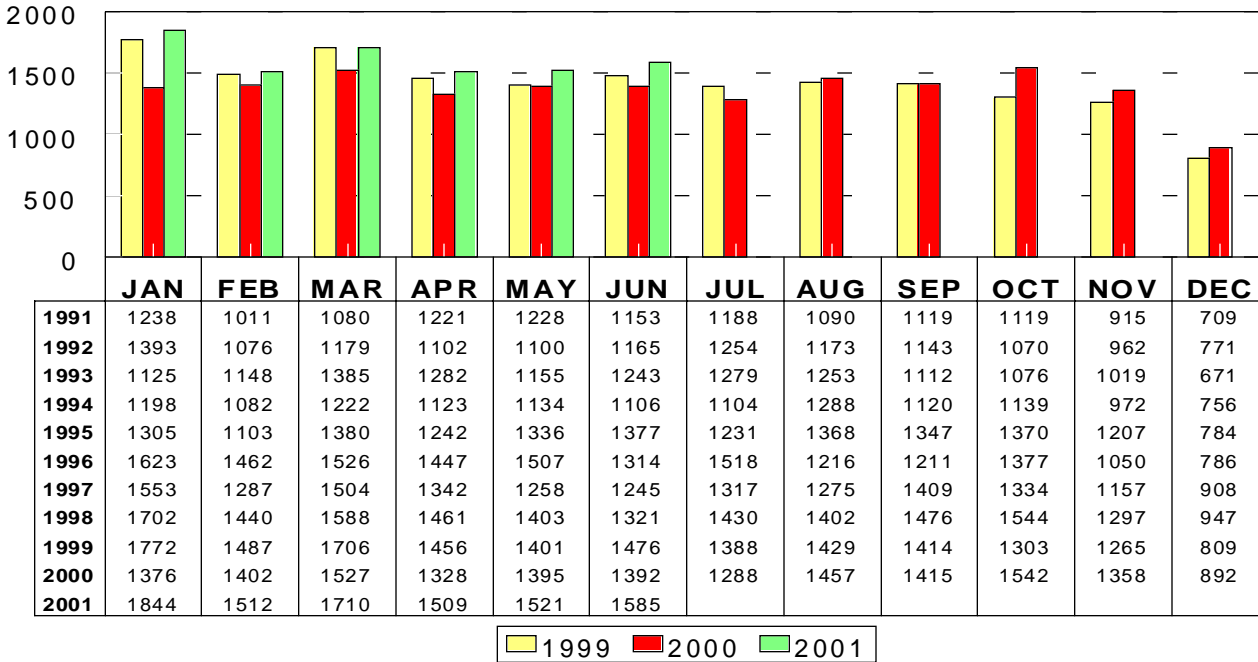
This representation is based in whole or in part on data supplied by the Tucson Association of REALTORS® or its Multiple Listing Service. Neither the Association nor its MLS guarantees or is in any way responsible for its accuracy. Data maintained by the Association or its MLS may not reflect all real estate activity in the market.

# RESIDENTIAL STATISTICS

Including: Single Family, Townhouse, Condominium, Mobile Home, and New Construction

## New Listings

June 2001: 1585

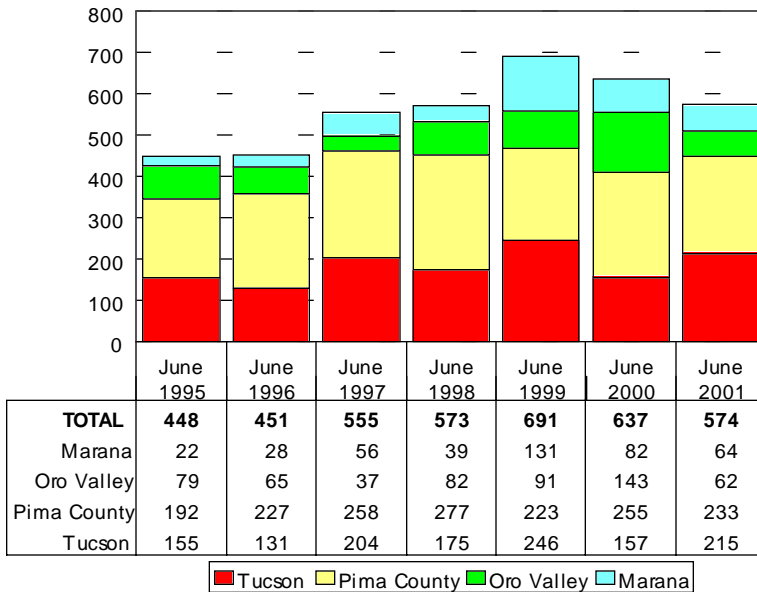


June 2001

Area	New
C	254
CCO	25
CPI	47
CSC	16
E	136
N	160
NE	135
NW	314
S	53
SE	98
SW	83
W	108
XNE	2
XNW	68
XS	25
XSE	10
XSW	16
XW	35

## New Housing Permits

June 2001: 574



June 2001 Type of Permits Issued  
Tucson Metro Area

Type	# Issued
Commercial Addition	30
Commercial Alteration	96
Commercial Demolition	3
Commercial New	31
Commercial Other	310
Commercial Tenant Improv	17
Duplex New	2
Duplex Other	8
Fence	10
Mobile Homes	213
Multi Family Alteration	0
Multi Family New	0
Multi Family Other	33
Patio/Ret. Wall	175
Residence Pool	106
Residential Demolition	11
Semi Public Pool	0
Sign	15
Single Family Addition	242
Single Family Alteration	103
Single Family New	596
Single Family Other	750
Travel Trailer	6
Industrial New	0
Industrial Other	0
Single Family Renewal	0
<b>TOTAL</b>	<b>2757</b>

Source: Bright Future Business Consultants

Source: Bright Future Business Consultants

This representation is based in whole or in part on data supplied by the Tucson Association of REALTORS® or its Multiple Listing Service. Neither the Association nor its MLS guarantees or is in any way responsible for its accuracy. Data maintained by the Association or its MLS may not reflect all real estate activity in the market.