

**For Immediate
Release:
February 5, 2019**

**CONTACT:
Cheryl Terpening
MLSSAZ President
(520) 907-2437**

**Sean Murphy
Executive Vice President
(520) 382-8792**

**Randy Rogers
CEO, MLSSAZ
(520) 327-4218**

Multiple Listing Service of Southern Arizona Statistics 2018 YEAR END REVIEW

Dear MLS Subscribers:

2018 proved to be another great year for the Tucson housing market with an ever-increasing Total Sales Volume. Listing prices and sales prices continue to grow, exceeding pre-recessions numbers. Please continue to read through the following pages to see the Tucson Market Trends.

A snapshot of the MLS Year in Review Summary shows total sales volume for 2018 is \$4,097,516,530, an increase of 7.91% over 2017. The total unit sales increased by 297, while total units listed were slightly less than 2017. The average list and sold prices had significant increases over 2017. Days on market as well as cumulative days on market decreased again this year and is less than it has been in over 10 years. All signs indicative that Tucson's market remains high demand and low inventory. Average % of list price received on sales increased slightly again this year.

I would like to recognize and extend gratitude to the entire MLSSAZ staff for a job well done. They continue to achieve excellence in everything they do and we are lucky to have such a hard working team providing their services to our REALTOR® community.

As we begin 2019, we continue to hope our residential housing market continues to show growth and improvement.

On behalf of the Tucson Association of REALTORS® and Multiple Listing Service of Southern Arizona, we wish you all continued success in the new year!

*Cheryl Terpening
2019 MLSSAZ President*



**Lifestyle Opportunities:
No matter what area or type of home
you are interested in, you have a
variety of options.
Financial:
Multiple financing opportunities are
available
Talk to a REALTOR®!
With the complexity of a real estate
transaction, you need a REALTOR®.**



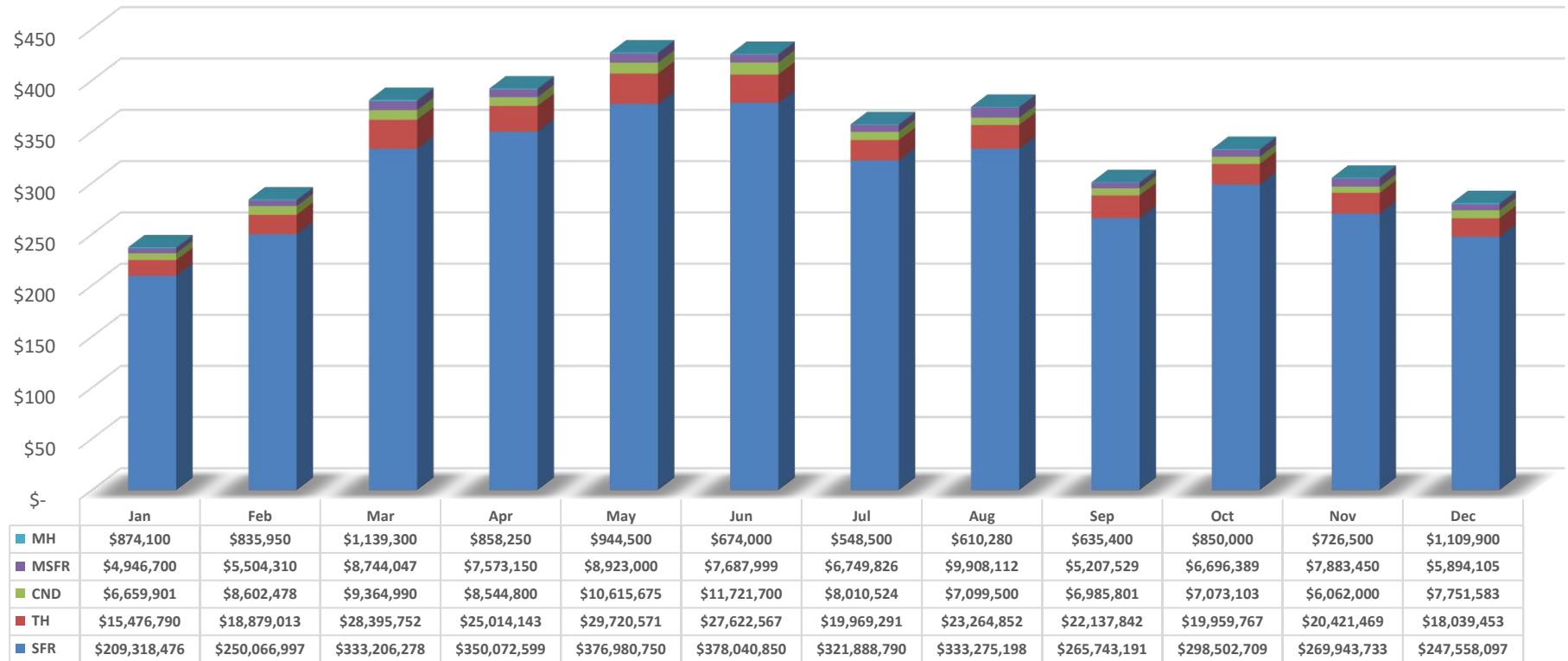
The Multiple Listing Service Southern Arizona is a wholly owned subsidiary of the Tucson Association of REALTORS®, dedicated to providing a reliable real estate database for members and the public. The Association represents the interests of 5,400 professionals in the real estate industry, and is affiliated with the National Association of REALTORS®. REALTOR® is a registered collective membership mark which may only be used by professionals who are members and subscribe to its strict code of ethics.

2018 MLS Year in Review Summary

	2008	2009	2010	2011	2012	2013	2014	2015	2016	2017	2018
Total Sales Volume	\$ 2,560,571,338	\$ 2,345,672,056	\$ 2,234,884,205	\$ 2,194,210,104	\$ 2,480,670,298	\$ 2,836,342,803	\$ 2,785,457,970	\$ 3,157,057,716	\$ 3,652,484,514	\$ 3,773,311,675	\$ 4,097,516,530
Total Sales Units	10,578	11,661	11,802	13,418	14,236	14,819	13,739	15,060	16,842	15,932	16,229
Total Units Listed	26,592	22,170	31,914	29,719	26,661	28,301	29,432	29,723	29,118	25,928	25,670
Average List Price	\$254,247	\$211,524	\$199,197	\$171,767	\$180,745	\$197,584	\$209,398	\$216,148	\$222,659	\$242,451	\$258,141
Average Sale Price	\$242,066	\$201,155	\$189,352	\$163,527	\$174,253	\$191,399	\$202,740	\$209,631	\$216,8667	\$236,838	\$252,481
Average DOM /CDOM	78 / 123	78 / 113	88 / 121	82 / 107	59 / 75	54 / 69	62 / 80	63 / 84	54 / 71	44 / 58	42 / 53
Average % of LP received on Sales	95.21%	95.10%	94.59%	95.20%	96.41%	96.86%	96.82%	96.98%	97.39%	97.68%	97.80%

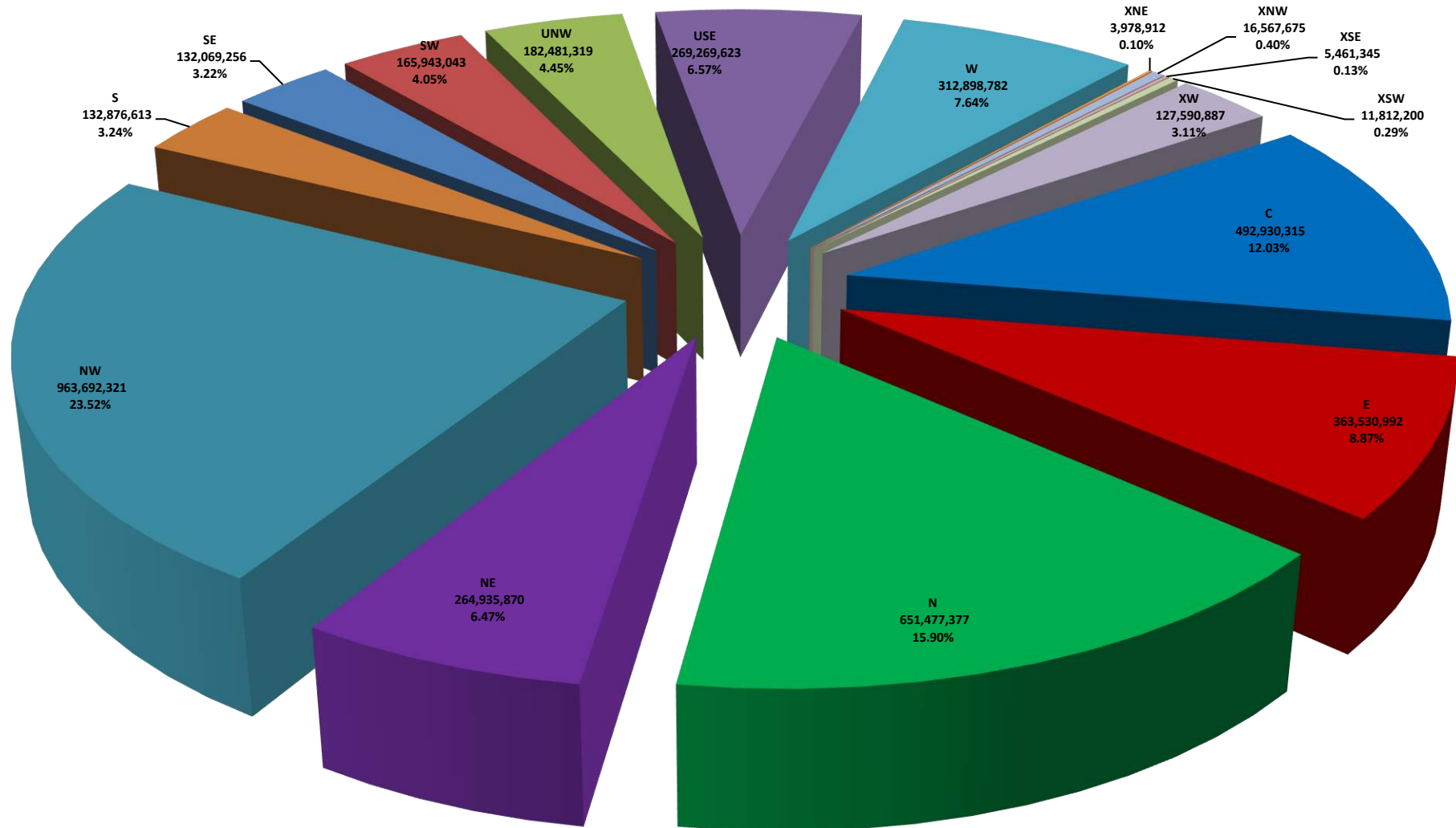
Please note: The data contained in this report is dynamic in nature and therefore subject to change and adjust with the passage of time. These figures and charts are an approximation of the flow of business as observed through the MLS of Southern Arizona. This report does not represent all real estate activity in the area as it does not include unrepresented sales, commercial sales or a substantial portion of new home sales. Though the data and materials presented here are deemed to be substantially correct, neither the Tucson Association of REALTORS® nor the MLS of Southern Arizona guarantees nor is in any way responsible for its accuracy.

2018 All Residential Total Sales Volume by Month and Type



Please note: The data contained in this report is dynamic in nature and therefore subject to change and adjust with the passage of time. These figures and charts are an approximation of the flow of business as observed through the MLS of Southern Arizona. This report does not represent all real estate activity in the area as it does not include unrepresented sales, commercial sales or a substantial portion of new home sales. Though the data and materials presented here are deemed to be substantially correct, neither the Tucson Association of REALTORS® nor the MLS of Southern Arizona guarantees nor is in any way responsible for its accuracy.

2018 All Residential Total Sales Volume % of Market by Area



Please note: The data contained in this report is dynamic in nature and therefore subject to change and adjust with the passage of time. These figures and charts are an approximation of the flow of business as observed through the MLS of Southern Arizona. This report does not represent all real estate activity in the area as it does not include unrepresented sales, commercial sales or a substantial portion of new home sales. Though the data and materials presented here are deemed to be substantially correct, neither the Tucson Association of REALTORS® nor the MLS of Southern Arizona guarantees nor is in any way responsible for its accuracy.

YEAR END 2018 RESIDENTIAL SALES STATISTICS

ALL RESIDENTIAL TOTAL SALES UNITS

	0-2 BR	3 BR	4 BR	5+ BR	ALL BR
C	768	1242	351	72	2433
E	261	1080	517	53	1911
N	556	550	384	139	1,629
NE	176	350	232	62	820
NW	675	1483	864	161	3,183
S	156	534	229	28	947
SE	31	278	189	45	543
SW	206	479	280	35	1,000
UNW	255	225	79	19	578
USE	111	505	400	66	1,082
W	249	638	309	61	1,257
XNE	9	5	1	0	15
XNW	7	46	30	7	90
XSE	1	8	6	2	17
XSW	15	60	18	4	97
XW	42	341	210	34	627
TOTALS	3,518	7,824	4,099	788	16,229

TH TOTAL SALES UNITS

	0-2 BR	3 BR	4 BR	5+ BR	ALL BR
C	157	86	2	0	245
E	108	111	2	0	221
N	214	104	6	0	324
NE	75	46	0	0	121
NW	201	60	0	0	261
S	35	12	1	0	48
SE	6	1	0	0	7
SW	31	2	0	0	33
UNW	31	0	0	0	31
USE	4	0	0	0	4
W	49	44	1	0	94
XNE	0	0	0	0	0
XNW	0	0	0	0	0
XSE	0	0	0	0	0
XSW	0	0	0	0	0
XW	0	0	0	0	0
TOTALS	911	466	12	0	1,389

MH TOTAL SALES UNITS

	0-2 BR	3 BR	4 BR	5+ BR	ALL BR
C	10	5	0	0	15
E	0	0	0	0	0
N	0	0	0	0	0
NE	0	0	0	0	0
NW	8	2	2	0	12
S	2	3	0	2	7
SE	0	1	0	0	1
SW	66	15	1	0	82
UNW	1	1	0	0	2
USE	0	0	0	0	0
W	2	1	0	0	3
XNE	0	0	0	0	0
XNW	0	0	0	0	0
XSE	0	0	0	0	0
XSW	0	0	0	0	0
XW	4	6	2	0	12
TOTALS	0	34	5	2	134

SFR TOTAL SALES UNITS

	0-2 BR	3 BR	4 BR	5+ BR	ALL BR
C	436	1097	337	72	1,942
E	56	955	515	53	1,579
N	69	406	377	139	991
NE	26	303	232	62	623
NW	393	1390	858	161	2,802
S	112	477	217	24	830
SE	23	255	174	43	495
SW	44	386	254	34	718
UNW	218	196	72	17	503
USE	106	482	388	63	1,039
W	149	573	306	61	1,089
XNE	9	5	1	0	15
XNW	6	41	30	7	84
XSE	0	8	6	2	16
XSW	10	28	6	2	46
XW	16	192	164	27	399
TOTALS	1,673	6,794	3,937	767	13,171

CND TOTAL SALES UNITS

	0-2 BR	3 BR	4 BR	5+ BR	ALL BR
C	156	28	0	0	184
E	95	9	0	0	104
N	273	40	1	0	314
NE	75	1	0	0	76
NW	62	21	0	0	83
S	2	0	0	0	2
SE	0	0	0	0	0
SW	2	0	0	0	2
UNW	0	0	0	0	0
USE	0	0	0	0	0
W	46	10	0	0	56
XNE	0	0	0	0	0
XNW	0	0	0	0	0
XSE	0	0	0	0	0
XSW	0	0	0	0	0
XW	0	0	0	0	0
TOTALS	711	109	1	0	821

MSFR TOTAL SALES UNITS

	0-2 BR	3 BR	4 BR	5+ BR	ALL BR
C	9	26	12	0	47
E	2	5	0	0	7
N	0	0	0	0	0
NE	0	0	0	0	0
NW	11	10	4	0	25
S	5	42	11	2	60
SE	2	21	15	2	40
SW	63	76	25	1	165
UNW	5	28	7	2	42
USE	1	23	12	3	39
W	3	10	2	0	15
XNE	0	0	0	0	0
XNW	1	5	0	0	6
XSE	1	0	0	0	1
XSW	5	32	12	2	51
XW	22	143	44	7	216
TOTALS	130	421	144	19	714

Please note: The data contained in this report is dynamic in nature and therefore subject to change and adjust with the passage of time. These figures and charts are an approximation of the flow of business as observed through the MLS of Southern Arizona. This report does not represent all real estate activity in the area as it does not include unrepresented sales, commercial sales or a substantial portion of new home sales. Though the data and materials presented here are deemed to be substantially correct, neither the Tucson Association of REALTORS® nor the MLS of Southern Arizona guarantees nor is in any way responsible for its accuracy.

2018 All Residential Total Unit Sales by Price and Area

	C	E	N	NE	NW	UNW	S	SE	USE	SW	W	XNE	XNW	XSE	XSW	XW	ALL Areas
29,999 or under	17	5	0	1	1	0	3	0	0	5	3	1	0	0	4	3	43
30,000 - 39,999	7	4	0	8	0	0	4	0	0	7	1	0	0	0	4	4	39
40,000 - 49,999	17	12	2	10	1	1	5	0	0	18	4	0	0	0	2	7	79
50,000 - 59,999	14	13	10	14	4	0	13	1	2	26	5	0	0	0	4	15	121
60,000 - 69,999	35	16	4	17	5	2	22	0	0	23	13	0	0	0	6	9	152
70,000 - 79,999	32	24	11	13	4	2	39	1	0	23	9	0	0	0	10	6	174
80,000 - 89,999	49	30	7	11	6	3	43	2	1	18	4	0	0	0	5	12	191
90,000 - 99,999	63	17	6	10	6	3	40	0	1	22	9	0	0	0	9	13	199
100,000 - 119,999	162	73	53	8	33	7	88	6	3	56	47	0	2	0	14	39	591
120,000 - 139,999	286	171	70	4	38	9	183	13	11	87	68	1	12	0	8	48	1,009
140,000 - 159,999	324	242	88	27	93	19	223	20	30	134	74	1	15	1	8	41	1,340
160,000 - 179,999	336	386	97	37	240	13	154	67	130	195	103	0	17	0	8	48	1,831
180,000 - 199,999	195	297	78	33	317	19	72	83	139	155	138	0	14	1	3	47	1,591
200,000 - 249,999	364	367	126	119	731	107	46	143	330	155	316	3	26	1	6	156	2996
250,000 - 299,999	206	140	155	135	533	102	9	108	229	45	195	3	3	2	4	109	1,978
300,000 - 399,999	204	68	285	180	655	178	3	67	154	28	152	5	0	11	1	65	2,056
400,000 - 499,999	57	26	227	77	256	72	0	27	38	3	56	1	0	1	1	5	847
500,000 - 749,999	44	14	262	84	182	35	0	3	12	0	44	0	1	0	0	0	681
750,000 - 999,999	11	6	86	22	54	5	0	1	2	0	11	0	0	0	0	0	198
1,000,000 +	10	0	62	10	24	1	0	1	0	0	5	0	0	0	0	0	113
ALL Price Ranges	2,433	1,911	1,629	820	3,183	578	947	543	1,082	1,000	1,257	15	90	17	97	627	16,229

2018 SFR Total Unit Sales by Price and Area

	C	E	N	NE	NW	UNW	S	SE	USE	SW	W	XNE	XNW	XSE	XSW	XW	ALL Areas
29,999 or under	1	1	0	0	0	0	1	0	0	0	0	1	0	0	1	0	5
30,000 - 39,999	1	0	0	0	0	0	1	0	0	0	0	0	0	0	1	0	3
40,000 - 49,999	1	1	0	0	0	0	1	0	0	0	1	0	0	0	0	0	4
50,000 - 59,999	4	0	0	0	0	0	9	0	1	2	0	0	0	0	0	0	16
60,000 - 69,999	8	0	0	0	0	0	16	0	0	1	2	0	0	0	3	0	30
70,000 - 79,999	15	2	0	0	0	0	26	0	0	4	2	0	0	0	4	0	53
80,000 - 89,999	17	0	0	0	1	0	28	0	0	1	2	0	0	0	0	1	50
90,000 - 99,999	26	3	0	0	0	3	27	0	1	5	2	0	0	0	1	3	71
100,000 - 119,999	89	29	0	0	6	2	69	2	0	14	11	0	0	0	4	2	228
120,000 - 139,999	209	87	0	0	17	4	154	6	2	27	15	1	9	0	4	4	539
140,000 - 159,999	280	183	2	3	48	8	215	13	24	103	49	1	14	0	5	5	953
160,000 - 179,999	288	366	13	9	196	3	153	58	119	182	98	0	17	0	8	25	1,535
180,000 - 199,999	170	287	18	18	279	17	72	72	130	151	136	0	14	1	3	33	1,401
200,000 - 249,999	330	366	51	97	641	83	46	138	327	153	310	3	26	1	6	148	2,726
250,000 - 299,999	189	140	89	127	492	17	9	107	229	44	193	3	3	2	4	109	1,834
300,000 - 399,999	194	68	225	177	611	177	3	67	154	28	152	5	0	11	1	64	1,937
400,000 - 499,999	55	26	194	76	254	72	0	27	38	3	56	1	0	1	1	5	809
500,000 - 749,999	44	14	251	84	180	35	0	3	12	0	44	0	1	0	0	0	668
750,000 - 999,999	11	6	86	22	53	5	0	1	2	0	11	0	0	0	0	0	197
1,000,000 +	10	0	62	10	24	0	0	1	0	0	5	0	0	0	0	0	112
ALL Price Ranges	1,942	1,579	991	623	2,802	503	830	495	1,039	718	1,089	15	84	16	46	399	13,171

Please note: The data contained in this report is dynamic in nature and therefore subject to change and adjust with the passage of time. These figures and charts are an approximation of the flow of business as observed through the MLS of Southern Arizona. This report does not represent all real estate activity in the area as it does not include unrepresented sales, commercial sales or a substantial portion of new home sales. Though the data and materials presented here are deemed to be substantially correct, neither the Tucson Association of REALTORS® nor the MLS of Southern Arizona guarantees nor is in any way responsible for its accuracy.

2018 TH Total Unit Sales by Price and Area

	C	E	N	NE	NW	UNW	S	SE	USE	SW	W	XNE	XNW	XSE	XSW	XW	ALL Areas
29,999 or under	0	0	0	0	0	0	0	0	0	0	0	0	0	0	0	0	0
30,000 - 39,999	0	0	0	0	0	0	0	0	0	0	0	0	0	0	0	0	0
40,000 - 49,999	1	3	0	0	0	0	1	0	0	0	0	0	0	0	0	0	5
50,000 - 59,999	1	0	0	0	0	0	2	0	0	0	0	0	0	0	0	0	3
60,000 - 69,999	3	5	0	5	0	0	4	0	0	0	0	0	0	0	0	0	17
70,000 - 79,999	6	4	0	5	0	0	6	0	0	1	1	0	0	0	0	0	23
80,000 - 89,999	8	9	0	4	0	0	8	0	0	1	0	0	0	0	0	0	30
90,000 - 99,999	20	5	0	1	0	0	4	0	0	0	4	0	0	0	0	0	34
100,000 - 119,999	33	30	4	1	1	0	4	0	0	5	25	0	0	0	0	0	103
120,000 - 139,999	45	80	16	4	11	0	14	0	0	20	35	0	0	0	0	0	228
140,000 - 159,999	36	54	26	24	30	0	5	1	1	4	15	0	0	0	0	0	196
160,000 - 179,999	36	20	32	28	30	1	0	2	1	2	4	0	0	0	0	0	156
180,000 - 199,999	19	10	27	15	24	1	0	0	1	0	2	0	0	0	0	0	99
200,000 - 249,999	21	1	56	22	79	21	0	2	0	0	6	0	0	0	0	0	208
250,000 - 299,999	8	0	59	8	38	7	0	0	0	0	2	0	0	0	0	0	122
300,000 - 399,999	7	0	60	3	44	0	0	0	0	0	0	0	0	0	0	0	114
400,000 - 499,999	1	0	33	1	1	0	0	0	0	0	0	0	0	0	0	0	36
500,000 - 749,999	0	0	11	0	2	0	0	0	0	0	0	0	0	0	0	0	13
750,000 - 999,999	0	0	0	0	1	0	0	0	0	0	0	0	0	0	0	0	1
1,000,000 +	0	0	0	0	0	1	0	0	0	0	0	0	0	0	0	0	1
ALL Price Ranges	245	221	324	121	261	31	48	7	4	33	94	0	0	0	0	0	1,389

2018 CND Total Unit Sales by Price and Area

	C	E	N	NE	NW	UNW	S	SE	USE	SW	W	XNE	XNW	XSE	XSW	XW	ALL Areas
29,999 or under	13	4	0	1	0	0	0	0	0	0	1	0	0	0	0	0	19
30,000 - 39,999	2	4	0	8	0	0	0	0	0	0	0	0	0	0	0	0	14
40,000 - 49,999	12	8	2	10	1	0	0	0	0	1	1	0	0	0	0	0	35
50,000 - 59,999	5	13	10	14	0	0	0	0	0	1	3	0	0	0	0	0	46
60,000 - 69,999	17	11	4	12	2	0	1	0	0	0	11	0	0	0	0	0	58
70,000 - 79,999	9	18	11	8	2	0	0	0	0	0	6	0	0	0	0	0	54
80,000 - 89,999	18	21	7	7	0	0	0	0	0	0	2	0	0	0	0	0	55
90,000 - 99,999	14	9	6	9	5	0	0	0	0	0	2	0	0	0	0	0	45
100,000 - 119,999	25	9	49	7	20	0	0	0	0	0	8	0	0	0	0	0	118
120,000 - 139,999	18	3	54	0	1	0	1	0	0	0	16	0	0	0	0	0	93
140,000 - 159,999	7	4	60	0	13	0	0	0	0	0	6	0	0	0	0	0	90
160,000 - 179,999	12	0	52	0	12	0	0	0	0	0	0	0	0	0	0	0	76
180,000 - 199,999	6	0	33	0	14	0	0	0	0	0	0	0	0	0	0	0	53
200,000 - 249,999	13	0	19	0	10	0	0	0	0	0	0	0	0	0	0	0	42
250,000 - 299,999	9	0	7	0	3	0	0	0	0	0	0	0	0	0	0	0	19
300,000 - 399,999	3	0	0	0	0	0	0	0	0	0	0	0	0	0	0	0	3
400,000 - 499,999	1	0	0	0	0	0	0	0	0	0	0	0	0	0	0	0	1
500,000 - 749,999	0	0	0	0	0	0	0	0	0	0	0	0	0	0	0	0	0
750,000 - 999,999	0	0	0	0	0	0	0	0	0	0	0	0	0	0	0	0	0
1,000,000 +	0	0	0	0	0	0	0	0	0	0	0	0	0	0	0	0	0
ALL Price Ranges	184	104	314	76	83	0	2	0	0	2	56	0	0	0	0	0	821

Please note: The data contained in this report is dynamic in nature and therefore subject to change and adjust with the passage of time. These figures and charts are an approximation of the flow of business as observed through the MLS of Southern Arizona. This report does not represent all real estate activity in the area as it does not include unrepresented sales, commercial sales or a substantial portion of new home sales. Though the data and materials presented here are deemed to be substantially correct, neither the Tucson Association of REALTORS® nor the MLS of Southern Arizona guarantees nor is in any way responsible for its accuracy.

2018 MH Total Unit Sales by Price and Area

	C	E	N	NE	NW	UNW	S	SE	USE	SW	W	XNE	XNW	XSE	XSW	XW	ALL Areas
29,999 or under	2	0	0	0	1	0	1	0	0	5	0	0	0	0	0	0	9
30,000 - 39,999	3	0	0	0	0	0	1	0	0	5	0	0	0	0	0	1	10
40,000 - 49,999	2	0	0	0	0	0	2	0	0	11	1	0	0	0	0	2	18
50,000 - 59,999	1	0	0	0	1	0	1	0	0	11	2	0	0	0	0	3	19
60,000 - 69,999	3	0	0	0	2	0	0	0	0	12	0	0	0	0	0	1	18
70,000 - 79,999	1	0	0	0	1	0	0	0	0	9	0	0	0	0	0	1	12
80,000 - 89,999	1	0	0	0	1	1	1	0	0	9	0	0	0	0	0	0	13
90,000 - 99,999	0	0	0	0	0	0	0	0	0	4	0	0	0	0	0	0	4
100,000 - 119,999	2	0	0	0	3	0	0	1	0	10	0	0	0	0	0	1	17
120,000 - 139,999	0	0	0	0	2	0	0	1	0	3	0	0	0	0	0	1	6
140,000 - 159,999	0	0	0	0	1	1	1	0	0	2	0	0	0	0	0	0	5
160,000 - 179,999	0	0	0	0	0	0	0	0	0	1	0	0	0	0	0	2	3
180,000 - 199,999	0	0	0	0	0	0	0	0	0	0	0	0	0	0	0	0	0
200,000 - 249,999	0	0	0	0	0	0	0	0	0	0	0	0	0	0	0	0	0
250,000 - 299,999	0	0	0	0	0	0	0	0	0	0	0	0	0	0	0	0	0
300,000 - 399,999	0	0	0	0	0	0	0	0	0	0	0	0	0	0	0	0	0
400,000 - 499,999	0	0	0	0	0	0	0	0	0	0	0	0	0	0	0	0	0
500,000 - 749,999	0	0	0	0	0	0	0	0	0	0	0	0	0	0	0	0	0
750,000 - 999,999	0	0	0	0	0	0	0	0	0	0	0	0	0	0	0	0	0
1,000,000 +	0	0	0	0	0	0	0	0	0	0	0	0	0	0	0	0	0
ALL Price Ranges	15	0	0	0	12	2	7	1	0	82	3	0	0	0	0	12	134

2018 MSFR Total Unit Sales by Price and Area

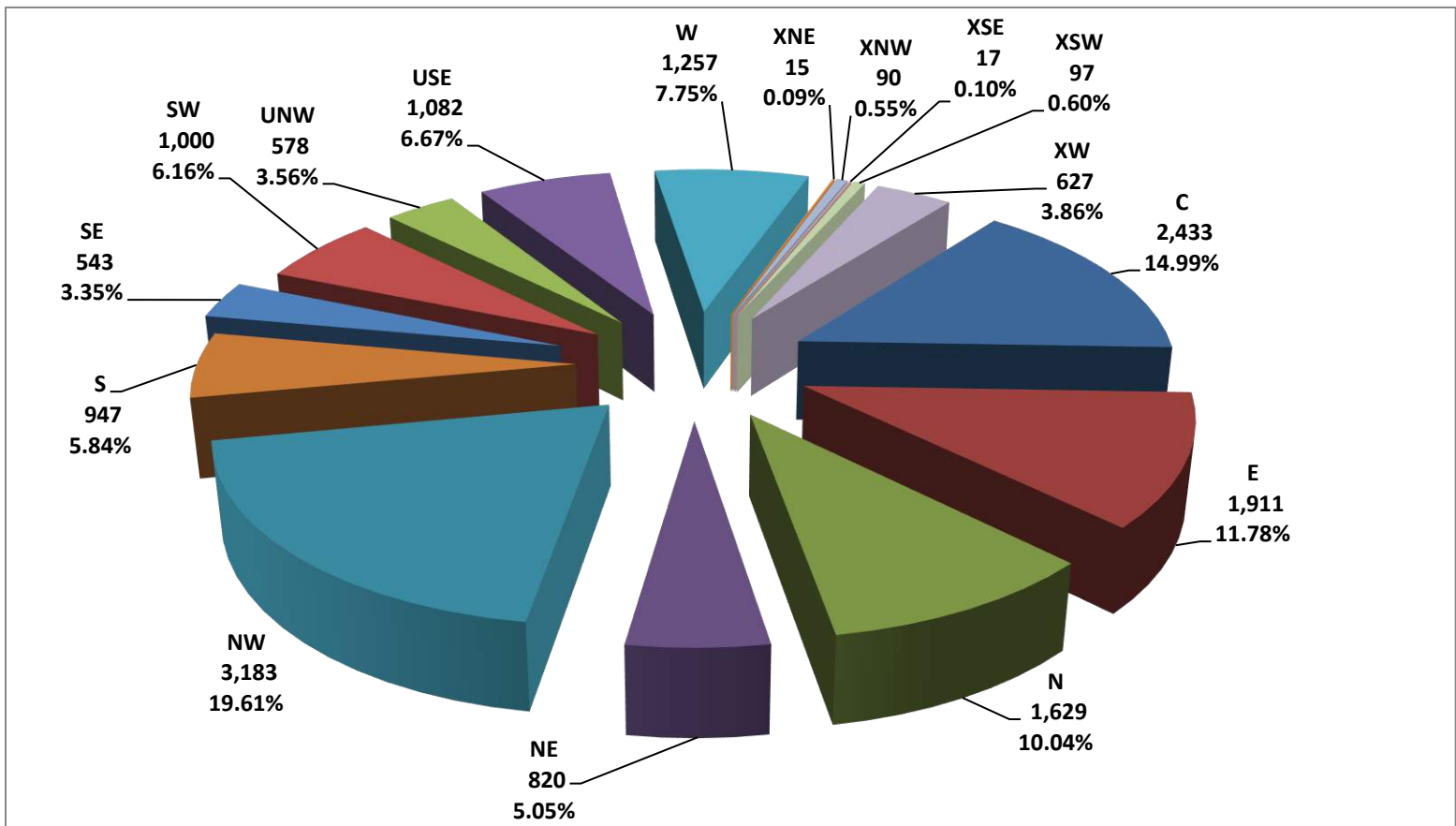
	C	E	N	NE	NW	UNW	S	SE	USE	SW	W	XNE	XNW	XSE	XSW	XW	ALL Areas
29,999 or under	1	0	0	0	0	0	1	0	0	0	2	0	0	0	3	3	10
30,000 - 39,999	1	0	0	0	0	0	2	0	0	2	1	0	0	0	3	3	12
40,000 - 49,999	1	0	0	0	0	1	1	0	0	6	1	0	0	0	2	5	17
50,000 - 59,999	3	0	0	0	3	0	1	1	1	12	0	0	0	0	4	12	37
60,000 - 69,999	4	0	0	0	1	2	1	0	0	10	0	0	0	0	3	8	29
70,000 - 79,999	1	0	0	0	1	2	7	1	0	9	0	0	0	0	6	5	32
80,000 - 89,999	5	0	0	0	4	2	6	2	1	7	0	0	0	0	5	11	43
90,000 - 99,999	3	0	0	0	1	0	9	0	0	13	1	0	0	0	8	10	45
100,000 - 119,999	13	5	0	0	3	5	15	3	3	27	3	0	2	0	10	36	125
120,000 - 139,999	14	1	0	0	7	5	14	3	3	37	2	0	3	0	4	43	143
140,000 - 159,999	1	1	0	0	1	10	2	6	5	25	4	0	1	1	3	36	96
160,000 - 179,999	0	0	0	0	2	9	1	7	10	10	1	0	0	0	0	21	61
180,000 - 199,999	0	0	0	0	0	1	0	11	8	4	0	0	0	0	0	14	38
200,000 - 249,999	0	0	0	0	1	3	0	3	3	2	0	0	0	0	0	8	20
250,000 - 299,999	0	0	0	0	0	1	0	1	0	1	0	0	0	0	0	0	3
300,000 - 399,999	0	0	0	0	0	1	0	0	0	0	0	0	0	0	0	1	2
400,000 - 499,999	0	0	0	0	1	0	0	0	0	0	0	0	0	0	0	0	1
500,000 - 749,999	0	0	0	0	0	0	0	0	0	0	0	0	0	0	0	0	0
750,000 - 999,999	0	0	0	0	0	0	0	0	0	0	0	0	0	0	0	0	0
1,000,000 +	0	0	0	0	0	0	0	0	0	0	0	0	0	0	0	0	0
ALL Price Ranges	47	7	0	0	25	42	60	40	39	165	15	0	6	1	51	216	714

Please note: The data contained in this report is dynamic in nature and therefore subject to change and adjust with the passage of time. These figures and charts are an approximation of the flow of business as observed through the MLS of Southern Arizona. This report does not represent all real estate activity in the area as it does not include unrepresented sales, commercial sales or a substantial portion of new home sales. Though the data and materials presented here are deemed to be substantially correct, neither the Tucson Association of REALTORS® nor the MLS of Southern Arizona guarantees nor is in any way responsible for its accuracy.

2018 All RESIDENTIAL – Total Unit Sales by Type

	SFR	TH	CND	MH	MSFR	Totals
Jan	791	82	58	12	43	986
Feb	915	97	74	12	51	1,149
Mar	1,249	141	69	16	77	1,552
Apr	1,254	121	71	15	64	1,525
May	1,322	151	90	15	72	1,650
Jun	1,330	148	95	10	65	1,648
Jul	1,164	111	71	7	59	1,412
Aug	1,180	123	61	8	74	1,446
Sep	993	119	54	9	43	1,218
Oct	1,100	100	59	11	59	1,329
Nov	969	103	53	8	59	1,192
Dec	904	93	66	11	48	1,122

2018 RESIDENTIAL Total Sales Units by Area



Please note: The data contained in this report is dynamic in nature and therefore subject to change and adjust with the passage of time. These figures and charts are an approximation of the flow of business as observed through the MLS of Southern Arizona. This report does not represent all real estate activity in the area as it does not include unrepresented sales, commercial sales or a substantial portion of new home sales. Though the data and materials presented here are deemed to be substantially correct, neither the Tucson Association of REALTORS® nor the MLS of Southern Arizona guarantees nor is in any way responsible for its accuracy.

YEAR END 2018 RESIDENTIAL SALES STATISTICS

ALL RESIDENTIAL AVG. SALE PRICE

	0-2 BR	3 BR	4 BR	5+ BR	ALL BR
C	149,908	207,573	260,877	394,816	202,601
E	113,888	183,744	226,774	341,870	190,230
N	208,197	388,357	573,666	732,625	399,924
NE	143,217	312,463	415,451	548,102	202,601
NW	247,158	280,705	361,529	423,682	302,762
UNW	316,129	316,888	313,489	305,410	315,711
S	99,990	140,470	163,556	171,867	140,313
SE	179,202	221,653	269,820	308,848	243,221
USE	230,314	228,360	267,549	323,675	248,862
SW	104,483	169,349	196,982	232,739	165,943
W	167,640	239,763	307,501	379,823	248,925
XNE	234,656	298,400	375,000		265,260
XNW	145,485	181,038	188,267	224,785	184,085
XSE	140,000	306,403	374,553	311,400	321,255
XSW	72,566	122,505	135,000	235,850	121,775
XW	144,081	183,198	237,492	270,449	203,494
All Areas	185,803	234,525	309,545	431,601	252,481

TH AVG. SALE PRICE

	0-2 BR	3 BR	4 BR	5+ BR	ALL BR
C	137,402	178,108	317,500		153,161
E	124,475	139,754	136,250		132,256
N	245,911	308,649	391,933		268,754
NE	159,673	202,834			176,081
NW	231,539	244,551			234,531
UNW	283,953				283,953
S	96,965	124,491	66,500		103,212
SE	172,166	170,000			171,857
USE	156,125				156,125
SW	127,100	131,000			127,336
W	138,139	133,714	115,000		135,822
XNE					
XNW					
XSE					
XSW					
XW					
All Areas	187,396	203,310	286,716		193,593

MH AVG. SALE PRICE

	0-2 BR	3 BR	4 BR	5+ BR	ALL BR
C	48,203	73,020			56,475
E					
N					
NE					
NW	106,562	76,500	41,000		90,625
UNW	85,000	155,000			120,000
S	33,000	77,333		65,500	61,285
SE		118,000			118,000
USE					
SW	69,121	80,173	157,000		72,215
W	54,950	45,000			51,633
XNE					
XNW					
XSE					
XSW					
XW	55,625	103,000	84,000		
All Areas	68,601	84,961	81,400	65,500	73,184

SFR AVG. SALE PRICE

	0-2 BR	3 BR	4 BR	5+ BR	ALL BR
C	173,963	213,517	265,809	394,816	220,433
E	163,925	189,843	227,126	341,870	206,187
N	362,696	429,833	577,862	732,625	523,943
NE	315,666	329,891	415,451	548,102	382,875
NW	279,210	284,867	363,364	423,682	316,086
UNW	327,169	342,389	328,301	307,223	332,587
S	104,286	144,565	166,798	183,585	146,071
SE	183,146	228,077	278,642	314,721	251,290
USE	234,791	231,833	271,055	329,707	252,717
SW	160,061	182,827	202,334	235,319	190,819
W	204,779	252,304	309,098	379,823	268,903
XNE	234,656	298,400	375,000		265,260
XNW	150,400	187,433	188,267	224,785	188,198
XSE		306,403	374,553	311,400	332,584
XSW	82,150	172,017	185,333	353,200	162,095
XW	240,988	231,138	263,497	302,275	249,647
All Areas	230,329	245,495	316,132	439,040	275,954

CND AVG. SALE PRICE

	0-2 BR	3 BR	4 BR	5+ BR	ALL BR
C	105,791	189,096			118,468
E	72,402	113,834			75,987
N	139,585	174,615	82,000		143,864
NE	66,979	75,000			67,085
NW	139,156	191,500			152,400
UNW					
S	98,950				98,950
SE					
USE					
SW	50,950				50,950
W	91,209	137,465			99,469
XNE					
XNW					
XSE					
XSW					
XW					
All Areas	112,004	172,247	82,000		119,965

MSFR AVG. SALE PRICE

	0-2 BR	3 BR	4 BR	5+ BR	ALL BR
C	80,388	99,992	112,950		99,546
E	111,750	121,280			118,557
N					
NE					
NW	98,372	147,250	128,200		122,696
UNW	80,500	144,161	161,142	290,000	146,357
S	52,140	103,046	108,414	137,625	100,941
SE	154,950	151,047	167,486	182,575	158,983
USE	52,500	155,572	154,200	197,000	155,694
SW	93,283	119,504	144,204	145,000	113,389
W	52,025	109,556	159,500		104,709
XNE					
XNW	116,000	128,600			126,500
XSE	140,000				140,000
XSW	53,400	79,181	109,833	118,500	85,407
XW	89,687	122,196	147,542	147,692	124,875
All Areas	89,105	120,242	140,870	169,855	120,054

Please note: The data contained in this report is dynamic in nature and therefore subject to change and adjust with the passage of time. These figures and charts are an approximation of the flow of business as observed through the Tucson Association of REALTORS® Multiple Listing Service. This report does not represent all real estate activity in the area as it does not include unrepresented sales, commercial sales or a substantial portion of new home sales. Though the data and materials presented here are deemed to be substantially correct, neither the Tucson Association of REALTORS® nor the MLS guarantees nor is in any way responsible for its accuracy.

YEAR END 2018 RESIDENTIAL SALES STATISTICS

ALL RESIDENTIAL AVG. LIST PRICE

	0-2 BR	3 BR	4 BR	5+ BR	ALL BR
C	153,196	211,988	268,588	406,807	207,361
E	115,548	186,179	230,505	350,510	193,082
N	213,397	399,748	593,047	768,872	413,206
NE	147,338	319,137	428,322	574,417	332,456
NW	252,453	285,899	369,829	435,016	309,131
UNW	325,822	326,750	321,944	311,363	325,178
S	102,633	142,271	165,436	178,246	142,407
SE	183,366	224,091	272,154	313,199	245,880
USE	233,241	231,158	270,617	325,237	251,698
SW	109,056	171,977	199,129	239,213	168,971
W	170,316	243,685	314,725	397,426	254,075
XNE	286,888	318,580	385,000		303,993
XNW	145,871	184,650	191,381	232,914	187,631
XSE	150,000	307,878	374,029	323,499	323,776
XSW	78,756	125,961	138,288	240,100	125,656
XW	149,323	186,950	240,902	277,489	207,409
All Areas	190,321	239,026	316,550	446,886	258,141

TH AVG. LIST PRICE

	0-2 BR	3 BR	4 BR	5+ BR	ALL BR
C	140,008	181,335	339,500		156,143
E	126,275	141,744	141,200		134,180
N	251,802	320,351	400,166		276,553
NE	162,672	207,940			179,882
NW	236,511	248,529			239,274
UNW	99,271	126,465	67,600		105,410
S	156,750				156,750
SE	175,733	179,000			176,200
USE	131,173	138,500			131,617
SW	293,503				293,503
W	139,746	136,675	115,000		138,046
XNE					
XNW					
XSE					
XSW					
XW					
All Areas	191,451	208,389	295,416		198,032

MH AVG. LIST PRICE

	0-2 BR	3 BR	4 BR	5+ BR	ALL BR
C	55,208	83,780			64,732
E					
N					
NE					
NW	113,486	84,750	49,900		98,099
UNW	92,000	165,000			128,500
S	36,250	79,633		71,950	65,042
SE		120,000			120,000
USE					
SW	74,306	83,746	165,000		77,139
W	57,249	60,000			58,166
XNE					
XNW					
XSE					
XSW					
XW	61,575	106,383	92,000		89,050
All Areas	74,080	90,199	89,760	71,950	78,723

SFR AVG. LIST PRICE

	0-2 BR	3 BR	4 BR	5+ BR	ALL BR
C	177,665	218,125	273,655	406,807	225,673
E	165,978	192,335	230,852	350,510	209,272
N	373,914	441,650	597,452	768,872	542,102
NE	330,611	336,825	428,322	574,417	394,283
NW	284,871	290,117	371,696	435,016	322,687
UNW	336,821	353,110	337,315	313,588	342,454
S	107,049	146,328	168,767	190,462	148,170
SE	187,850	230,062	280,985	319,165	253,741
USE	237,810	234,615	274,088	331,202	255,538
SW	163,752	185,048	204,334	242,163	193,270
W	207,774	256,291	316,373	397,426	274,441
XNE	286,888	318,580	385,000		303,993
XNW	151,766	190,876	191,381	232,914	191,766
XSE		307,878	374,029	323,499	334,637
XSW	90,145	176,662	187,333	361,200	167,269
XW	245,490	235,134	267,395	310,162	253,887
All Areas	235,826	250,016	323,302	454,673	282,038

CND AVG. LIST PRICE

	0-2 BR	3 BR	4 BR	5+ BR	ALL BR
C	108,233	192,488			121,054
E	73,681	115,156			77,270
N	142,722	180,863	89,900		147,412
NE	68,468	75,000			68,554
NW	142,900	195,637			156,243
UNW					
S	107,400				107,400
SE					
USE					
SW	56,950				56,950
W	94,267	141,280			102,662
XNE					
XNW					
XSE					
XSW					
XW					
All Areas	114,637	176,668	89,900		122,842

MSFR AVG. LIST PRICE

	0-2 BR	3 BR	4 BR	5+ BR	ALL BR
C	86,077	100,138	114,483		101,108
E	113,000	124,780			121,414
N					
NE					
NW	104,125	153,600	129,450		127,967
UNW	93,400	148,007	163,842	292,450	151,023
S	51,899	105,185	108,627	137,950	102,468
SE	154,700	158,690	169,713	184,950	163,937
USE	54,900	158,726	158,408	199,966	159,138
SW	98,031	123,881	147,613	138,900	117,698
W	50,633	112,944	162,450		107,082
XNE					
XNW	110,500	133,599			129,749
XSE	150,000				150,000
XSW	55,980	81,598	113,766	119,000	88,122
XW	95,337	125,636	148,923	151,464	128,131
All Areas	93,865	123,748	143,146	171,986	123,503

Please note: The data contained in this report is dynamic in nature and therefore subject to change and adjust with the passage of time. These figures and charts are an approximation of the flow of business as observed through the MLS of Southern Arizona. This report does not represent all real estate activity in the area as it does not include unrepresented sales, commercial sales or a substantial portion of new home sales. Though the data and materials presented here are deemed to be substantially correct, neither the Tucson Association of REALTORS® nor the MLS of Southern Arizona guarantees nor is in any way responsible for its accuracy.

YEAR END 2018 RESIDENTIAL SALES STATISTICS

ALL RESIDENTIAL AVG. DOM

	0-2 BR	3 BR	4 BR	5+ BR	ALL BR
C	31	37	38	54	36
E	28	31	40	47	34
N	38	46	52	74	47
NE	30	47	60	60	48
NW	39	40	55	64	45
UNW	69	57	75	40	64
S	27	29	27	45	29
SE	30	37	38	48	38
USE	43	37	43	51	41
SW	52	40	38	56	42
W	28	31	43	51	34
XNE	534	383	139		457
XNW	21	53	38	52	45
XSE	103	77	56	99	73
XSW	65	58	44	268	65
XW	73	51	65	78	58
All Areas	39	39	47	60	42

TH AVG. DOM

	0-2 BR	3 BR	4 BR	5+ BR	ALL BR
C	33	29	70		32
E	26	27	63		27
N	39	45	60		41
NE	24	39			30
NW	44	47			44
UNW	89				89
S	23	32	19		25
SE	31	28			30
USE	83				83
SW	36	7			34
W	23	21	47		22
XNE					
XNW					
XSE					
XSW					
XW					
All Areas	36	35	57		36

MH AVG. DOM

	0-2 BR	3 BR	4 BR	5+ BR	ALL BR
C	64	24			51
E					
N					
NE					
NW	33	41	25		33
UNW	33	48			40
S	137	42		12	60
SE		27			27
USE					
SW	56	169	5		76
W	25	23			24
XNE					
XNW					
XSE					
XSW					
XW	74	27	14		40
All Areas	56	92	16	12	63

SFR AVG. DOM

	0-2 BR	3 BR	4 BR	5+ BR	ALL BR
C	32	38	38	54	37
E	23	32	39	47	35
N	36	44	52	74	51
NE	41	48	60	60	54
NW	39	39	55	64	45
UNW	67	60	79	41	65
S	28	28	28	49	29
SE	28	34	40	50	37
USE	42	37	43	53	41
SW	36	34	37	56	36
W	29	32	43	51	36
XNE	534	383	139		457
XNW	24	51	38	52	44
XSE		77	56	99	72
XSW	64	77	66	205	78
XW	111	59	69	92	68
All Areas	42	38	47	61	43

CND AVG. DOM

	0-2 BR	3 BR	4 BR	5+ BR	ALL BR
C	26	40			28
E	34	25			33
N	38	57	12		41
NE	31	7			30
NW	31	50			36
UNW					
S	18				18
SE					
USE					
SW	25				25
W	25	23			24
XNE					
XNW					
XSE					
XSW					
XW					
All Areas	33	45	12		34

MSFR AVG. DOM

	0-2 BR	3 BR	4 BR	5+ BR	ALL BR
C	24	26	30		26
E	33	6			14
N					
NE					
NW	26	30	27		28
UNW	40	37	38	30	37
S	10	34	15	24	28
SE	54	67	19	9	45
USE	21	52	46	16	47
SW	68	45	47	71	54
W	51	24	4		27
XNE					
XNW	2	69			57
XSE	103				103
XSW	67	41	33	332	53
XW	45	40	51	22	42
All Areas	53	41	39	56	43

Please note: The data contained in this report is dynamic in nature and therefore subject to change and adjust with the passage of time. These figures and charts are an approximation of the flow of business as observed through the MLS of Southern Arizona. This report does not represent all real estate activity in the area as it does not include unrepresented sales, commercial sales or a substantial portion of new home sales. Though the data and materials presented here are deemed to be substantially correct, neither the Tucson Association of REALTORS® nor the MLS of Southern Arizona guarantees nor is in any way responsible for its accuracy.

2018 Residential Avg. DOM by Price and Area

	C	E	N	NE	NW	UNW	S	SE	USE	SW	W	XNE	XNW	XSE	XSW	XW	ALL Areas
29,999 or under	36	81		1	32		28			116	39	610			51	24	63
30,000 - 39,999	34	29		34			23			168	0				89	11	59
40,000 - 49,999	27	46	38	48	138	33	92			95	20				13	57	56
50,000 - 59,999	38	72	33	31	31		13	297	13	37	25				59	37	39
60,000 - 69,999	34	22	53	26	9	60	38			46	32				56	30	35
70,000 - 79,999	27	14	7	21	27	36	26	10		49	17	446			63	34	28
80,000 - 89,999	31	35	12	30	29	28	23	69	8	79	31				59	81	38
90,000 - 99,999	38	10	45	37	32	41	33		9	44	34				28	44	35
100,000 - 119,999	31	29	46	6	22	31	34	28	43	46	40		38		38	45	35
120,000 - 139,999	26	23	47	33	24	46	30	15	47	42	14	1210	40		138	40	31
140,000 - 159,999	35	30	36	28	18	27	24	42	36	41	28	775	33	103	41	30	32
160,000 - 179,999	36	33	36	37	23	55	28	26	30	29	21		40		35	48	31
180,000 - 199,999	38	30	35	35	34	73	26	33	30	34	27		52	152	95	41	34
200,000 - 249,999	33	36	37	36	34	61	35	43	39	40	37	676	56	51	63	50	39
250,000 - 299,999	44	39	41	38	41	46	45	39	51	57	39	169	54	134	85	101	46
300,000 - 399,999	44	56	44	49	55	63	111	42	39	56	35	212		43	335	75	50
400,000 - 499,999	45	53	42	49	69	88		32	55	158	51	673		207	389	127	58
500,000 - 749,999	52	70	56	80	67	107		94	122		63		4				66
750,000 - 999,999	83	71	80	166	119	115		31	120		54						100
1,000,000 +	65		93	90	131	459		30			84						101
All Price Ranges	36	34	47	48	45	45	29	38	41	42	34	457	45	73	65	58	42

2018 SFR Avg. DOM by Price and Area

	C	E	N	NE	NW	UNW	S	SE	USE	SW	W	XNE	XNW	XSE	XSW	XW	ALL Areas
29,999 or under	7	129					53					610			100		179
30,000 - 39,999	1						3								32		12
40,000 - 49,999	8	15					78				36						34
50,000 - 59,999	28						10		6	23							16
60,000 - 69,999	44						46			122	14				52		46
70,000 - 79,999	14	9					29			33	39	446			94		29
80,000 - 89,999	47				41		23			22	5					182	34
90,000 - 99,999	39	8				41	30		9	32	68				12	30	34
100,000 - 119,999	38	24			22	20	34	35		26	77				78	79	37
120,000 - 139,999	28	27			20	24	31	9	47	28	9	1210	26		76	29	30
140,000 - 159,999	36	28	38	39	17	40	24	50	28	36	32	775	33		62	34	32
160,000 - 179,999	36	33	32	33	24	62	28	22	28	28	22		40		35	40	30
180,000 - 199,999	38	31	22	37	33	67	26	33	29	33	26		52	152	95	40	33
200,000 - 249,999	33	36	33	37	33	57	35	42	39	40	36	676	56	51	63	51	38
250,000 - 299,999	43	39	42	39	42	46	45	39	51	54	39	169	54	134	85	101	47
300,000 - 399,999	42	56	41	49	51	63	111	42	39	56	35	212		43	335	74	49
400,000 - 499,999	43	53	40	49	69	88		32	55	158	51	673		207	389	127	58
500,000 - 749,999	52	70	57	80	66	107		94	122		63		4				66
750,000 - 999,999	83	71	80	166	121	115		31	120		54						100
1,000,000 +	65		93	90	131			30			84						97
All Price Ranges	35	32	53	56	48	78	26	41	42	41	37	160	46	106	65	51	43

Please note: The data contained in this report is dynamic in nature and therefore subject to change and adjust with the passage of time. These figures and charts are an approximation of the flow of business as observed through the MLS of Southern Arizona. This report does not represent all real estate activity in the area as it does not include unrepresented sales, commercial sales or a substantial portion of new home sales. Though the data and materials presented here are deemed to be substantially correct, neither the Tucson Association of REALTORS® nor the MLS of Southern Arizona guarantees nor is in any way responsible for its accuracy.

2018 TH Avg. DOM by Price and Area

	C	E	N	NE	NW	UNW	S	SE	USE	SW	W	XNE	XNW	XSE	XSW	XW	ALL Areas
29,999 or under																	
30,000 - 39,999																	
40,000 - 49,999	9	31					11										23
50,000 - 59,999	13						7										9
60,000 - 69,999	13	34		16			20										22
70,000 - 79,999	16	30		25			12			82	23						22
80,000 - 89,999	33	45		29			24			35							34
90,000 - 99,999	32	9		15			49				5						27
100,000 - 119,999	26	33	53	9	0		51			13	30						30
120,000 - 139,999	25	19	53	33	27		21	6	124	34	11						24
140,000 - 159,999	29	33	20	27	16		27	3	7	23	21						26
160,000 - 179,999	33	30	35	39	22	215		22	81	82	18						33
180,000 - 199,999	35	16	39	33	32	62			120		40						34
200,000 - 249,999	29	43	34	32	39	81		77			62						41
250,000 - 299,999	59		41	20	26	47					45						36
300,000 - 399,999	107		56	29	109												79
400,000 - 499,999	1		48	0	88												47
500,000 - 749,999			34		196												59
750,000 - 999,999					29												29
1,000,000 +						459											459
All Price Ranges	32	27	41	30	44	89	25	30	83	34	22						36

2018 CND Avg. DOM by Price and Area

	C	E	N	NE	NW	UNW	S	SE	USE	SW	W	XNE	XNW	XSE	XSW	XW	ALL Areas
29,999 or under	37	69		1							10						40
30,000 - 39,999	22	29		34													31
40,000 - 49,999	26	55	38	48	138					11	5						42
50,000 - 59,999	58	72	33	31						39	25						46
60,000 - 69,999	38	17	53	30	7		3				36						31
70,000 - 79,999	25	11	7	19	43						9						15
80,000 - 89,999	16	30	12	31							57						24
90,000 - 99,999	30	12	45	39	30						50						31
100,000 - 119,999	23	37	46	5	21						22						32
120,000 - 139,999	16	11	45		6		34				20						33
140,000 - 159,999	16	48	42		18						23						36
160,000 - 179,999	25		38		14												32
180,000 - 199,999	26		39		58												42
200,000 - 249,999	25		58		75												52
250,000 - 299,999	51		19		59												40
300,000 - 399,999	52																52
400,000 - 499,999	170																170
500,000 - 749,999																	
750,000 - 999,999																	
1,000,000 +																	
All Price Ranges	28	33	41	30	36		18			25	24						34

Please note: The data contained in this report is dynamic in nature and therefore subject to change and adjust with the passage of time. These figures and charts are an approximation of the flow of business as observed through the MLS of Southern Arizona. This report does not represent all real estate activity in the area as it does not include unrepresented sales, commercial sales or a substantial portion of new home sales. Though the data and materials presented here are deemed to be substantially correct, neither the Tucson Association of REALTORS® nor the MLS of Southern Arizona guarantees nor is in any way responsible for its accuracy.

2018 MH Avg. DOM by Price and Area

	C	E	N	NE	NW	UNW	S	SE	USE	SW	W	XNE	XNW	XSE	XSW	XW	ALL Areas
29,999 or under	20				32		25			116							75
30,000 - 39,999	33						63			193						6	113
40,000 - 49,999	55						135			61	23					162	78
50,000 - 59,999	65				1		53			43	25					37	40
60,000 - 69,999	13				11					68						6	49
70,000 - 79,999	329				18					47						15	65
80,000 - 89,999	38				64	33	3			127							98
90,000 - 99,999										133							133
100,000 - 119,999	20				64			27		53						8	47
120,000 - 139,999					4					9						1	6
140,000 - 159,999					58	48	10			30							35
160,000 - 179,999										13						8	10
180,000 - 199,999																	
200,000 - 249,999																	
250,000 - 299,999																	
300,000 - 399,999																	
400,000 - 499,999																	
500,000 - 749,999																	
750,000 - 999,999																	
1,000,000 +																	
All Price Ranges	51				33	40	60	27		76	24					40	63

2018 MSFR Avg. DOM by Price and Area

	C	E	N	NE	NW	UNW	S	SE	USE	SW	W	XNE	XNW	XSE	XSW	XW	ALL Areas
29,999 or under	93						6				53				35	24	38
30,000 - 39,999	97						13			108	0				108	13	58
40,000 - 49,999	20					33	101			171	19				13	15	76
50,000 - 59,999	15				41		20	297	21	34					59	37	43
60,000 - 69,999	33				10	60	14			11					60	34	29
70,000 - 79,999	0				4	36	28	10		55					42	38	38
80,000 - 89,999	28				17	26	19	69	8	33					59	72	43
90,000 - 99,999	99				43		33			21	48				30	48	37
100,000 - 119,999	15	17			2	36	32	25	43	60	32		38		22	44	38
120,000 - 139,999	15	7			38	64	29	25	38	59	42		82		200	42	47
140,000 - 159,999	17	6			51	14	5	33	80	63	13		25	103	6	30	38
160,000 - 179,999					40	34	29	55	47	35	2					61	48
180,000 - 199,999						185		35	34	44						44	43
200,000 - 249,999					41	25		68	76	44						32	45
250,000 - 299,999						53		4		203							86
300,000 - 399,999						7										137	72
400,000 - 499,999					3												3
500,000 - 749,999																	
750,000 - 999,999																	
1,000,000 +																	
All Price Ranges	26	14			28	37	28	45	47	54	27		57	103	53	42	43

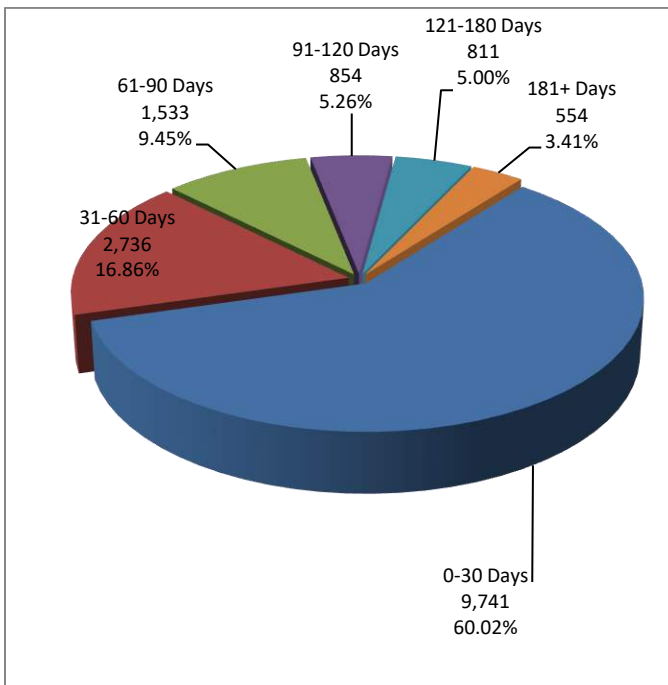
Please note: The data contained in this report is dynamic in nature and therefore subject to change and adjust with the passage of time. These figures and charts are an approximation of the flow of business as observed through the MLS of Southern Arizona. This report does not represent all real estate activity in the area as it does not include unrepresented sales, commercial sales or a substantial portion of new home sales. Though the data and materials presented here are deemed to be substantially correct, neither the Tucson Association of REALTORS® nor the MLS of Southern Arizona guarantees nor is in any way responsible for its accuracy.

YEAR END 2018 RESIDENTIAL SALES STATISTICS

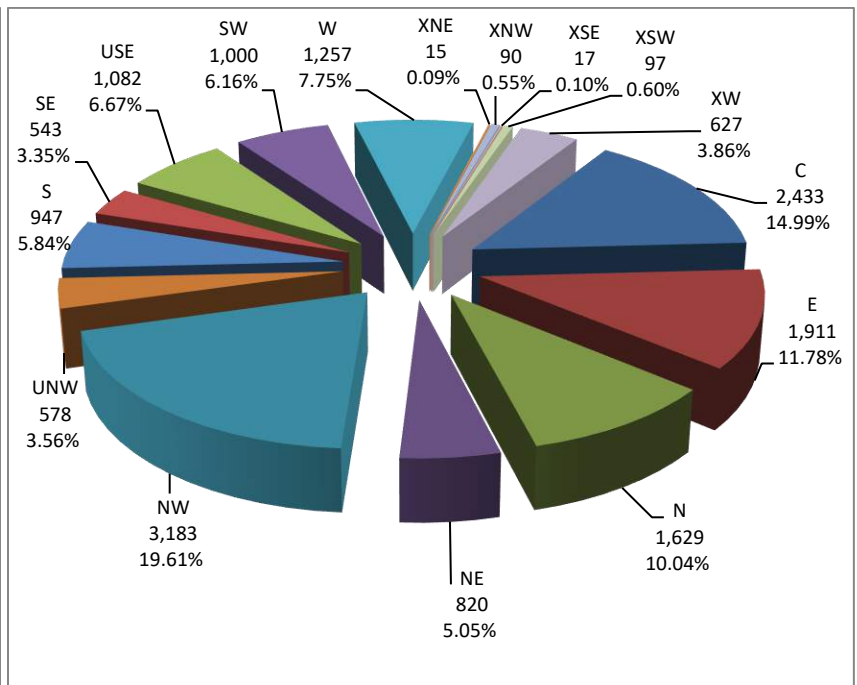
All RESIDENTIAL Avg. % - SP/LP

	SFR	TH	CND	MH	MSFR
C	97.68%	98.09%	97.86%	87.24%	98.46%
E	98.53%	98.57%	98.34%		97.65%
N	96.65%	97.18%	97.59%		
NE	97.11%	97.89%	97.86%		
NW	97.95%	98.02%	97.54%	92.38%	95.88%
S	98.58%	97.92%	92.13%	94.22%	98.51%
SE	99.03%	97.54%		98.33%	96.98%
SW	98.73%	96.75%	89.46%	93.62%	96.34%
UNW	97.12%	96.75%		93.39%	96.91%
USE	98.9%	99.6%			97.84%
W	97.98%	98.39%	96.89%	88.77%	97.78%
XNE	87.26%				
XNW	98.14%				97.5%
XSE	99.39%				93.33%
XSW	96.91%				96.92%
XW	98.33%			94.38%	97.46%
All Areas	97.84%	97.76%	97.66%	92.96%	97.21%

All RESIDENTIAL - Days on Market



Total Listings by Area



Please note: The data contained in this report is dynamic in nature and therefore subject to change and adjust with the passage of time. These figures and charts are an approximation of the flow of business as observed through the MLS of Southern Arizona. This report does not represent all real estate activity in the area as it does not include unrepresented sales, commercial sales or a substantial portion of new home sales. Though the data and materials presented here are deemed to be substantially correct, neither the Tucson Association of REALTORS® nor the MLS of Southern Arizona guarantees nor is in any way responsible for its accuracy.

YEAR END 2018 RESIDENTIAL SALES STATISTICS

ALL RESIDENTIAL – Total Listings

	0-2 BR	3 BR	4 BR	5+ BR	ALL BR
C	1,105	1,946	634	164	3,849
E	352	1,504	781	106	2,743
N	787	897	840	324	2,848
NE	231	538	416	147	1,332
NW	997	2,322	1,542	326	5,187
UNW	387	406	160	39	992
S	227	750	324	38	1,339
SE	52	383	311	64	810
USE	174	748	610	119	1,651
SW	320	732	418	77	1,547
W	328	921	539	118	1,906
XNE	18	22	2	1	43
XNW	9	61	42	14	126
XSE	3	20	7	7	0
XSW	40	122	38	7	207
XW	87	546	349	71	1,053
Total	5,117	11,918	7,013	1,622	25,670

CND – Total Listings

	0-2 BR	3 BR	4 BR	5+ BR	ALL BR
C	218	46	1	1	266
E	121	22	0	0	143
N	389	56	1	0	446
NE	102	1	0	0	103
NW	79	28	0	0	107
UNW	0	0	0	0	0
S	2	0	0	0	2
SE	0	0	0	0	0
USE	0	0	0	0	0
SW	5	2	0	0	7
W	61	11	1	0	73
XNE	0	0	0	0	0
XNW	0	0	0	0	0
XSE	0	0	0	0	0
XSW	0	0	0	0	0
XW	0	0	0	0	0
Total	977	166	3	1	1,147

SFR – Total Listings

	0-2 BR	3 BR	4 BR	5+ BR	ALL BR
C	632	1,711	609	161	3,113
E	75	1,333	778	106	2,292
N	107	680	828	324	1,939
NE	37	466	414	147	1,064
NW	592	2,177	1,532	325	4,626
UNW	333	356	147	35	871
S	169	669	305	32	1,175
SE	38	351	287	61	737
USE	167	713	588	116	1,584
SW	74	579	383	74	1,110
W	196	836	534	117	1,683
XNE	18	21	2	1	42
XNW	8	56	42	14	120
XSE	2	20	7	7	36
XSW	18	51	17	5	91
XW	44	313	275	61	693
Total	2,510	10,332	6,748	1,586	21,176

MH – Total Listings

	0-2 BR	3 BR	4 BR	5+ BR	ALL BR
C	17	7	0	0	24
E	1	0	0	0	1
N	0	0	0	0	0
NE	0	0	0	0	0
NW	13	2	3	0	18
UNW	1	4	0	0	5
S	4	6	0	3	13
SE	0	2	0	0	2
USE	0	1	0	0	1
SW	89	25	2	0	116
W	3	3	0	0	6
XNE	0	0	0	0	0
XNW	0	0	0	0	0
XSE	0	0	0	0	0
XSW	4	3	0	0	7
XW	7	11	5	0	23
Total	139	64	10	3	216

TH – Total Listings

	0-2 BR	3 BR	4 BR	5+ BR	ALL BR
C	222	134	4	1	361
E	152	144	2	0	298
N	291	161	11	0	463
NE	92	71	2	0	165
NW	300	89	0	0	389
UNW	44	0	0	0	44
S	45	15	2	0	62
SE	10	2	0	0	12
USE	4	1	0	0	5
SW	39	2	0	0	41
W	65	57	2	0	124
XNE	0	0	0	0	0
XNW	0	0	0	0	0
XSE	0	0	0	0	0
XSW	1	0	0	0	1
XW	0	0	0	0	0
Total	1,265	676	23	1	1,965

MSFR – Total Listings

	0-2 BR	3 BR	4 BR	5+ BR	ALL BR
C	16	48	20	1	85
E	3	5	1	0	9
N	0	0	0	0	0
NE	0	0	0	0	0
NW	13	26	7	1	47
UNW	9	46	13	4	72
S	7	60	17	3	87
SE	4	28	24	3	59
USE	3	33	22	3	61
SW	113	124	33	3	273
W	3	14	2	1	20
XNE	0	1	0	0	1
XNW	1	5	0	0	6
XSE	1	0	0	0	1
XSW	17	68	21	2	108
XW	36	222	69	10	337
Total	226	680	229	31	1,166

Please note: The data contained in this report is dynamic in nature and therefore subject to change and adjust with the passage of time. These figures and charts are an approximation of the flow of business as observed through the MLS of Southern Arizona. This report does not represent all real estate activity in the area as it does not include unrepresented sales, commercial sales or a substantial portion of new home sales. Though the data and materials presented here are deemed to be substantially correct, neither the Tucson Association of REALTORS® nor the MLS of Southern Arizona guarantees nor is in any way responsible for its accuracy.

2018 All RESIDENTIAL – Total Listings by Price and Area (1/1/17 - 12/31/2017)

	C	E	N	NE	NW	UNW	S	SE	USE	SW	W	XNE	XNW	XSE	XSW	XW	ALL Areas
29,999 or under	21	7	0	1	1	0	2	0	0	5	2	0	0	0	11	2	52
30,000 - 39,999	14	5	0	8	0	0	5	0	0	8	4	0	0	0	8	6	58
40,000 - 49,999	19	14	5	15	1	0	9	1	0	20	3	0	0	0	9	9	105
50,000 - 59,999	25	16	16	21	4	1	13	1	2	32	6	0	0	0	5	17	159
60,000 - 69,999	39	20	4	21	7	1	24	1	0	43	19	0	0	0	8	24	211
70,000 - 79,999	51	24	12	18	9	1	50	2	0	33	7	0	0	0	16	18	241
80,000 - 89,999	69	40	9	13	6	3	52	0	1	30	10	0	0	0	14	19	266
90,000 - 99,999	90	40	10	12	9	9	56	1	0	38	11	0	0	0	19	26	321
100,000 - 119,999	206	86	54	8	38	9	142	5	7	81	44	0	3	0	28	55	766
120,000 - 139,999	397	200	90	9	51	19	248	22	12	141	101	1	7	0	17	78	1,393
140,000 - 159,999	403	346	107	29	111	22	290	28	43	176	89	1	19	1	16	61	1,742
160,000 - 179,999	464	477	132	31	280	22	224	88	155	276	126	1	22	0	14	68	2,380
180,000 - 199,999	358	442	113	56	433	23	107	117	189	235	180	0	19	2	12	67	2,353
200,000 - 249,999	550	552	175	152	1045	136	94	200	470	253	441	2	48	2	13	241	4,374
250,000 - 299,999	399	231	216	203	818	169	17	171	349	100	324	8	7	3	9	204	3,228
300,000 - 399,999	434	125	440	291	1142	296	6	102	287	65	252	14	0	16	5	139	3,614
400,000 - 499,999	150	59	436	147	467	158	0	50	73	9	121	8	0	3	2	13	1,696
500,000 - 749,999	95	38	547	181	421	92	0	15	53	1	101	6	1	6	0	6	1,563
750,000 - 999,999	38	11	245	87	180	23	0	4	5	1	48	2	0	3	1	0	648
1,000,000 +	27	10	237	29	164	8	0	2	5	0	17	0	0	1	0	0	500
All Price Ranges	3,849	2,743	2,848	1,332	5,187	992	1,339	810	1,651	1,547	1,906	43	126	37	207	1,053	25,670

2018 All SFR – Total Listings by Price and Area (1/1/17 - 12/31/2017)

	C	E	N	NE	NW	UNW	S	SE	USE	SW	W	XNE	XNW	XSE	XSW	XW	ALL Areas
29,999 or under	1	0	0	0	0	0	1	0	0	1	0	0	0	0	3	1	7
30,000 - 39,999	1	0	0	0	0	0	2	0	0	0	0	0	0	0	0	1	4
40,000 - 49,999	1	1	0	0	0	0	4	0	0	1	0	0	0	0	2	1	10
50,000 - 59,999	7	0	0	0	0	0	6	0	1	1	3	0	0	0	0	0	18
60,000 - 69,999	10	1	0	0	0	0	15	0	0	1	1	0	0	0	2	2	32
70,000 - 79,999	15	0	0	0	0	0	35	0	0	2	1	0	0	0	4	1	58
80,000 - 89,999	24	4	0	0	0	0	30	0	0	4	4	0	0	0	4	2	72
90,000 - 99,999	35	5	0	0	2	3	40	0	0	9	2	0	0	0	4	2	102
100,000 - 119,999	116	27	0	0	3	3	115	2	1	20	9	0	1	0	7	3	307
120,000 - 139,999	292	98	0	0	23	5	202	8	3	43	22	1	5	0	6	5	713
140,000 - 159,999	337	269	1	3	54	8	280	14	29	132	62	1	17	0	10	9	1,226
160,000 - 179,999	393	440	10	6	229	6	223	75	140	250	113	1	22	0	8	32	1,948
180,000 - 199,999	318	427	25	26	382	17	106	104	177	223	177	0	19	2	11	46	2,060
200,000 - 249,999	496	546	66	121	909	104	93	192	462	248	432	1	48	2	13	229	3,962
250,000 - 299,999	371	231	121	182	746	156	17	169	349	100	320	8	7	3	9	203	2,992
300,000 - 399,999	397	125	350	282	1061	1061	6	102	102	64	251	14	0	16	5	137	3,387
400,000 - 499,999	142	59	378	147	461	158	0	50	73	9	121	8	0	3	2	13	1,624
500,000 - 749,999	95	38	507	181	413	92	0	15	53	1	100	6	1	6	0	6	1,514
750,000 - 999,999	37	11	244	87	179	23	0	4	5	1	48	2	0	3	1	0	645
1,000,000 +	25	10	237	29	164	5	0	2	5	0	17	0	0	1	0	0	495
All Price Ranges	3,113	2,292	1,939	1,064	871	4,626	1,175	737	1,584	1,110	1,683	42	120	36	91	693	21,176

Please note: The data contained in this report is dynamic in nature and therefore subject to change and adjust with the passage of time. These figures and charts are an approximation of the flow of business as observed through the MLS of Southern Arizona. This report does not represent all real estate activity in the area as it does not include unrepresented sales, commercial sales or a substantial portion of new home sales. Though the data and materials presented here are deemed to be substantially correct, neither the Tucson Association of REALTORS® nor the MLS of Southern Arizona guarantees nor is in any way responsible for its accuracy.

2018 All TH – Total Listings by Price and Area (1/1/17 - 12/31/2017)

	C	E	N	NE	NW	UNW	S	SE	USE	SW	W	XNE	XNW	XSE	XSW	XW	ALL Areas
29,999 or under	0	0	0	0	0	0	0	0	0	0	0	0	0	0	0	0	0
30,000 - 39,999	0	0	0	0	0	0	0	0	0	0	0	0	0	0	0	0	0
40,000 - 49,999	1	3	0	0	0	0	2	0	0	0	0	0	0	0	0	0	6
50,000 - 59,999	1	1	0	1	0	0	1	0	0	0	1	0	0	0	0	0	5
60,000 - 69,999	2	5	0	4	0	0	3	0	0	0	0	0	0	0	0	0	14
70,000 - 79,999	10	4	0	5	0	0	9	0	0	1	1	0	0	0	0	0	30
80,000 - 89,999	10	11	0	4	0	0	7	0	0	1	2	0	0	0	0	0	35
90,000 - 99,999	25	16	1	0	0	0	8	0	0	0	4	0	0	0	0	0	54
100,000 - 119,999	43	39	2	1	0	0	3	0	0	4	29	0	0	0	0	0	121
120,000 - 139,999	60	95	19	8	13	0	20	2	1	22	44	0	0	0	1	0	285
140,000 - 159,999	49	71	30	26	36	0	9	3	1	10	16	0	0	0	0	0	251
160,000 - 179,999	51	32	37	25	36	1	0	2	1	3	10	0	0	0	0	0	198
180,000 - 199,999	27	15	31	30	32	1	0	2	1	0	3	0	0	0	0	0	142
200,000 - 249,999	32	6	69	31	112	26	0	3	0	0	9	0	0	0	0	0	288
250,000 - 299,999	15	0	87	21	66	12	0	0	0	0	4	0	0	0	0	0	205
300,000 - 399,999	28	0	90	9	80	80	0	0	0	0	1	0	0	0	0	0	211
400,000 - 499,999	6	0	56	0	5	0	0	0	0	0	0	0	0	0	0	0	67
500,000 - 749,999	0	0	40	0	8	0	0	0	0	0	0	0	0	0	0	0	48
750,000 - 999,999	0	0	1	0	1	0	0	0	0	0	0	0	0	0	0	0	2
1,000,000 +	1	0	0	0	0	2	0	0	0	0	0	0	0	0	0	0	3
All Price Ranges	361	298	463	165	44	389	62	12	5	41	124	0	0	0	1	0	1,965

2018 All CND – Total Listings by Price and Area (1/1/17 - 12/31/2017)

	C	E	N	NE	NW	UNW	S	SE	USE	SW	W	XNE	XNW	XSE	XSW	XW	ALL Areas
29,999 or under	15	6	0	1	0	0	0	0	0	1	0	0	0	0	0	0	23
30,000 - 39,999	2	5	0	8	0	0	0	0	0	0	1	0	0	0	0	0	16
40,000 - 49,999	12	10	5	15	1	0	0	0	0	1	1	0	0	0	0	0	45
50,000 - 59,999	8	15	16	20	0	0	0	0	0	1	0	0	0	0	0	0	60
60,000 - 69,999	18	14	4	17	1	0	0	0	0	2	17	0	0	0	0	0	73
70,000 - 79,999	18	19	12	13	3	0	1	0	0	1	5	0	0	0	0	0	72
80,000 - 89,999	23	25	9	9	0	0	0	0	0	1	4	0	0	0	0	0	71
90,000 - 99,999	21	19	9	12	3	0	0	0	0	0	4	0	0	0	0	0	68
100,000 - 119,999	34	16	52	7	23	0	0	0	0	0	4	0	0	0	0	0	136
120,000 - 139,999	24	5	71	1	3	0	1	0	0	0	28	0	0	0	0	0	133
140,000 - 159,999	13	4	76	0	18	0	0	0	0	0	8	0	0	0	0	0	119
160,000 - 179,999	17	5	85	0	12	0	0	0	0	0	0	0	0	0	0	0	119
180,000 - 199,999	13	0	57	0	16	0	0	0	0	0	0	0	0	0	0	0	86
200,000 - 249,999	22	0	40	0	22	0	0	0	0	0	0	0	0	0	0	0	84
250,000 - 299,999	13	0	8	0	5	0	0	0	0	0	0	0	0	0	0	0	26
300,000 - 399,999	9	0	0	0	0	0	0	0	0	0	0	0	0	0	0	0	9
400,000 - 499,999	2	0	2	0	0	0	0	0	0	0	0	0	0	0	0	0	4
500,000 - 749,999	0	0	0	0	0	0	0	0	0	0	1	0	0	0	0	0	1
750,000 - 999,999	1	0	0	0	0	0	0	0	0	0	0	0	0	0	0	0	1
1,000,000 +	1	0	0	0	0	0	0	0	0	0	0	0	0	0	0	0	1
All Price Ranges	266	143	446	103	0	107	2	0	0	7	73	0	0	0	0	0	1,147

Please note: The data contained in this report is dynamic in nature and therefore subject to change and adjust with the passage of time. These figures and charts are an approximation of the flow of business as observed through the MLS of Southern Arizona. This report does not represent all real estate activity in the area as it does not include unrepresented sales, commercial sales or a substantial portion of new home sales. Though the data and materials presented here are deemed to be substantially correct, neither the Tucson Association of REALTORS® nor the MLS of Southern Arizona guarantees nor is in any way responsible for its accuracy.

2018 All MH – Total Listings by Price and Area (1/1/17 - 12/31/2017)

	C	E	N	NE	NW	UNW	S	SE	USE	SW	W	XNE	XNW	XSE	XSW	XW	ALL Areas
29,999 or under	2	1	0	0	1	0	0	0	0	3	1	0	0	0	1	0	9
30,000 - 39,999	3	0	0	0	0	0	2	0	0	7	0	0	0	0	2	1	15
40,000 - 49,999	4	0	0	0	0	0	2	0	0	12	2	0	0	0	3	2	25
50,000 - 59,999	5	0	0	0	1	0	3	0	0	15	2	0	0	0	0	5	31
60,000 - 69,999	4	0	0	0	4	0	1	0	0	19	1	0	0	0	0	4	33
70,000 - 79,999	3	0	0	0	3	0	0	0	0	14	0	0	0	0	1	1	22
80,000 - 89,999	1	0	0	0	2	0	2	0	0	13	0	0	0	0	0	2	20
90,000 - 99,999	0	0	0	0	0	1	0	0	0	8	0	0	0	0	0	1	10
100,000 - 119,999	0	0	0	0	4	3	1	0	0	13	0	0	0	0	0	0	21
120,000 - 139,999	2	0	0	0	2	0	2	1	0	7	0	0	0	0	0	3	17
140,000 - 159,999	0	0	0	0	0	0	0	1	0	2	0	0	0	0	0	1	4
160,000 - 179,999	0	0	0	0	1	1	0	0	0	1	0	0	0	0	0	3	6
180,000 - 199,999	0	0	0	0	0	0	0	0	0	1	0	0	0	0	0	0	1
200,000 - 249,999	0	0	0	0	0	0	0	0	1	1	0	0	0	0	0	0	2
250,000 - 299,999	0	0	0	0	0	0	0	0	0	0	0	0	0	0	0	0	0
300,000 - 399,999	0	0	0	0	0	0	0	0	0	0	0	0	0	0	0	0	0
400,000 - 499,999	0	0	0	0	0	0	0	0	0	0	0	0	0	0	0	0	0
500,000 - 749,999	0	0	0	0	0	0	0	0	0	0	0	0	0	0	0	0	0
750,000 - 999,999	0	0	0	0	0	0	0	0	0	0	0	0	0	0	0	0	0
1,000,000 +	0	0	0	0	0	0	0	0	0	0	0	0	0	0	0	0	0
All Price Ranges	24	1	0	0	5	18	13	2	1	116	6	0	0	0	7	23	216

2018 All MSFR – Total Listings by Price and Area (1/1/17 - 12/31/2017)

	C	E	N	NE	NW	UNW	S	SE	USE	SW	W	XNE	XNW	XSE	XSW	XW	ALL Areas
29,999 or under	3	0	0	0	0	0	1	0	0	0	1	0	0	0	7	1	13
30,000 - 39,999	8	0	0	0	0	0	1	0	0	1	3	0	0	0	6	4	23
40,000 - 49,999	1	0	0	0	0	0	1	1	0	6	0	0	0	0	4	6	19
50,000 - 59,999	4	0	0	0	3	1	3	1	1	15	0	0	0	0	5	12	45
60,000 - 69,999	5	0	0	0	2	1	5	1	0	21	0	0	0	0	6	18	59
70,000 - 79,999	5	1	0	0	3	1	5	2	0	15	0	0	0	0	11	16	59
80,000 - 89,999	11	0	0	0	4	3	13	0	1	11	0	0	0	0	10	15	68
90,000 - 99,999	9	0	0	0	4	5	8	1	0	21	1	0	0	0	15	23	87
100,000 - 119,999	13	4	0	0	8	3	23	3	6	44	2	0	2	0	21	52	181
120,000 - 139,999	19	2	0	0	10	14	23	11	8	69	7	0	2	0	10	70	245
140,000 - 159,999	4	2	0	0	3	14	1	10	13	32	3	0	2	1	6	51	142
160,000 - 179,999	3	0	0	0	2	14	1	11	14	22	3	0	0	0	6	33	109
180,000 - 199,999	0	0	0	0	3	5	1	11	11	11	0	0	0	0	1	21	64
200,000 - 249,999	0	0	0	0	2	6	1	5	7	4	0	1	0	0	0	12	38
250,000 - 299,999	0	0	0	0	1	1	0	2	0	0	0	0	0	0	0	1	5
300,000 - 399,999	0	0	0	0	1	1	0	0	0	1	0	0	0	0	0	2	7
400,000 - 499,999	0	0	0	0	1	0	0	0	0	0	0	0	0	0	0	0	1
500,000 - 749,999	0	0	0	0	0	0	0	0	0	0	0	0	0	0	0	0	0
750,000 - 999,999	0	0	0	0	0	0	0	0	0	0	0	0	0	0	0	0	0
1,000,000 +	0	0	0	0	0	1	0	0	0	0	0	0	0	0	0	0	1
All Price Ranges	85	9	0	0	72	47	87	59	61	273	20	1	6	1	108	337	1,166

Please note: The data contained in this report is dynamic in nature and therefore subject to change and adjust with the passage of time. These figures and charts are an approximation of the flow of business as observed through the MLS of Southern Arizona. This report does not represent all real estate activity in the area as it does not include unrepresented sales, commercial sales or a substantial portion of new home sales. Though the data and materials presented here are deemed to be substantially correct, neither the Tucson Association of REALTORS® nor the MLS of Southern Arizona guarantees nor is in any way responsible for its accuracy.

YEAR END 2018 RESIDENTIAL SALES STATISTICS

2018 All RESIDENTIAL - Expired Listings

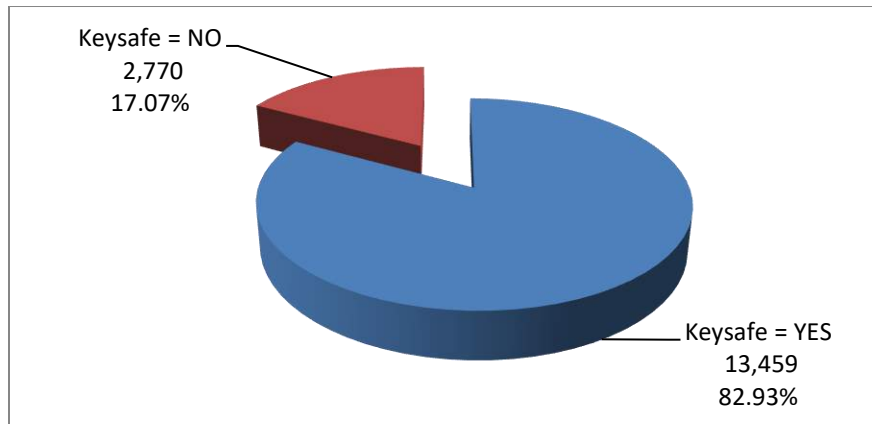
	C	E	N	NE	NW	UNW	S	SE	USE	SW	W	XNE	XNW	XSE	XSW	XW	ALL Areas
29,999 or under	0	2	0	0	0	0	0	0	0	1	0	0	0	0	2	0	5
30,000 - 39,999	0	0	0	0	0	0	0	0	0	0	0	0	0	0	0	0	0
40,000 - 49,999	0	1	1	0	0	0	2	0	0	2	0	0	0	0	2	1	9
50,000 - 59,999	2	0	2	1	0	0	0	0	0	0	0	0	0	0	0	3	8
60,000 - 69,999	2	0	0	0	0	0	1	0	0	5	0	0	0	0	1	3	12
70,000 - 79,999	0	1	0	1	0	0	1	0	0	1	0	0	0	0	3	3	10
80,000 - 89,999	1	2	0	0	0	1	1	0	0	0	1	0	0	0	1	0	7
90,000 - 99,999	1	0	0	0	3	1	2	0	0	4	0	0	0	0	1	1	13
100,000 - 119,999	3	2	2	0	1	2	6	0	0	2	3	0	0	0	2	6	29
120,000 - 139,999	14	4	1	0	1	2	10	0	0	7	2	0	0	0	2	1	44
140,000 - 159,999	26	10	3	0	3	0	6	2	2	3	1	0	0	0	0	7	63
160,000 - 179,999	30	10	3	1	5	0	9	4	5	5	5	0	0	0	4	4	85
180,000 - 199,999	33	23	3	1	11	1	2	5	3	12	7	0	0	1	2	3	107
200,000 - 249,999	32	26	7	9	52	4	2	11	14	11	21	0	1	0	2	13	205
250,000 - 299,999	31	13	15	10	31	10	2	8	15	8	18	0	1	0	1	15	178
300,000 - 399,999	41	10	22	13	57	18	1	6	22	4	20	2	0	0	1	4	221
400,000 - 499,999	15	5	28	11	33	18	0	8	3	3	12	1	0	0	1	1	139
500,000 - 749,999	7	3	67	12	35	16	0	1	10	0	16	2	0	0	0	2	171
750,000 - 999,999	5	2	34	13	22	1	0	1	0	1	7	1	0	0	0	0	87
1,000,000 +	2	2	37	5	32	0	0	1	2	0	2	0	0	0	0	0	83
All Price Ranges	245	116	225	77	286	74	45	47	76	69	115	6	2	1	25	67	1,476

2018 All RESIDENTIAL - Cancelled Listings

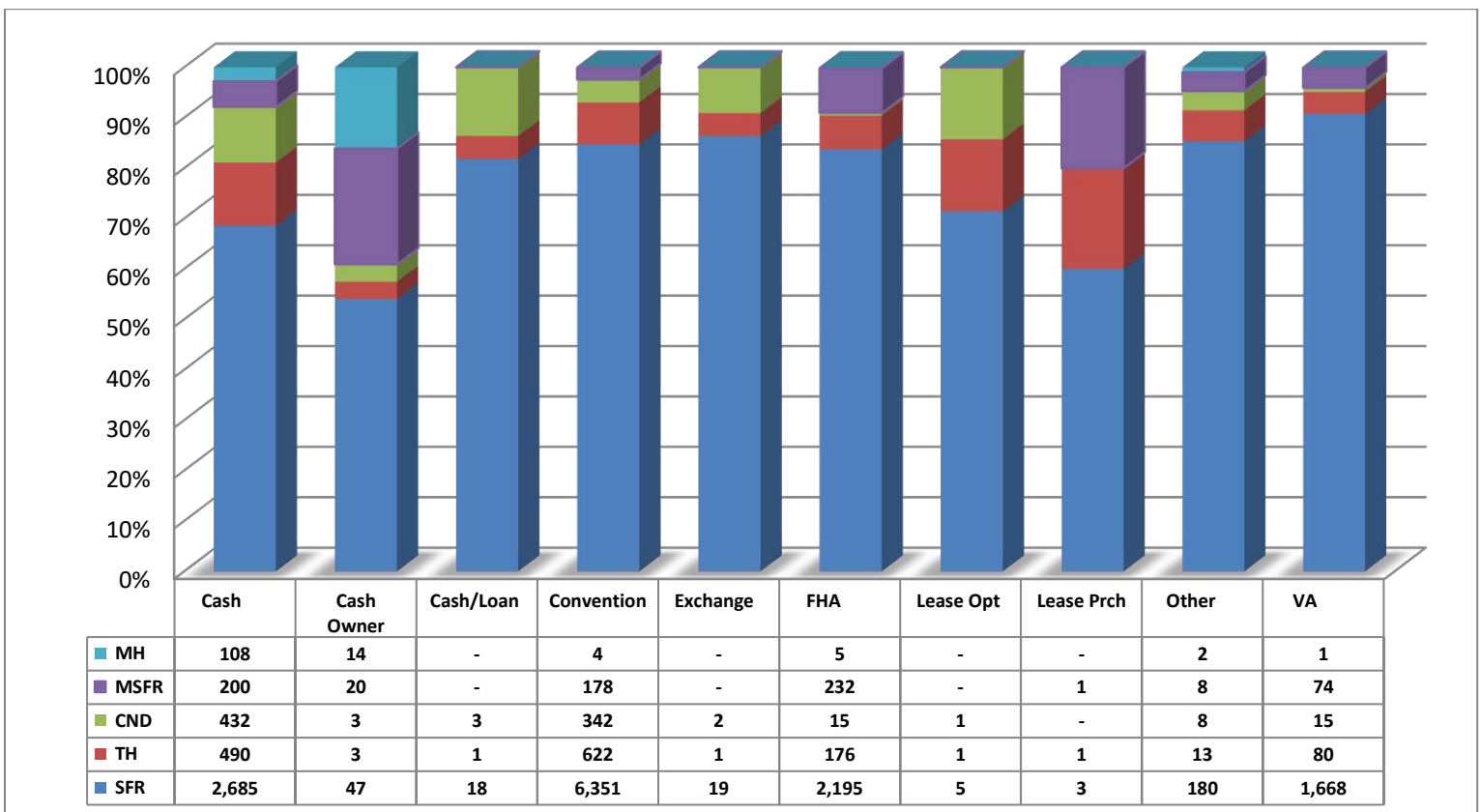
	C	E	N	NE	NW	UNW	S	SE	USE	SW	W	XNE	XNW	XSE	XSW	XW	ALL Areas
29,999 or under	4	2	0	0	0	0	0	0	0	1	0	0	0	0	0	0	7
30,000 - 39,999	7	0	0	1	0	0	1	0	0	0	0	0	0	0	3	0	12
40,000 - 49,999	1	2	2	0	0	0	0	1	0	0	1	0	0	0	5	0	12
50,000 - 59,999	1	1	1	2	0	0	0	0	0	4	1	0	0	0	1	4	15
60,000 - 69,999	3	0	0	1	1	0	2	0	0	4	2	0	0	0	2	4	19
70,000 - 79,999	3	2	1	2	0	0	5	1	0	4	1	0	0	0	2	2	23
80,000 - 89,999	6	0	1	0	0	0	6	0	0	3	2	0	0	0	2	3	23
90,000 - 99,999	10	6	2	1	0	2	8	0	0	4	1	0	0	0	2	6	42
100,000 - 119,999	21	6	1	0	3	0	21	1	2	7	3	0	0	0	9	7	81
120,000 - 139,999	33	13	7	0	1	5	26	4	0	14	8	0	0	0	3	7	121
140,000 - 159,999	43	40	6	1	8	1	19	4	3	17	5	0	0	0	4	7	158
160,000 - 179,999	38	37	13	2	22	5	18	6	13	20	11	0	2	0	1	4	192
180,000 - 199,999	45	52	11	5	30	3	10	6	18	27	11	0	5	0	3	7	233
200,000 - 249,999	70	58	15	14	115	13	16	21	51	40	42	1	11	0	3	24	494
250,000 - 299,999	65	29	14	21	103	22	2	14	45	18	49	0	1	0	2	34	419
300,000 - 399,999	102	21	71	38	175	40	1	7	42	16	27	1	0	1	0	15	557
400,000 - 499,999	36	13	81	22	67	20	0	6	6	0	22	1	0	0	0	2	276
500,000 - 749,999	24	9	102	43	79	14	0	5	4	0	18	1	0	1	0	4	304
750,000 - 999,999	7	1	50	27	32	1	0	1	2	0	8	0	0	1	0	0	130
1,000,000 +	11	4	57	6	31	0	0	0	0	0	2	0	0	1	0	0	112
All Price Ranges	530	296	435	186	667	126	135	77	186	179	214	4	19	4	42	130	3,230

Please note: The data contained in this report is dynamic in nature and therefore subject to change and adjust with the passage of time. These figures and charts are an approximation of the flow of business as observed through the MLS of Southern Arizona. This report does not represent all real estate activity in the area as it does not include unrepresented sales, commercial sales or a substantial portion of new home sales. Though the data and materials presented here are deemed to be substantially correct, neither the Tucson Association of REALTORS® nor the MLS of Southern Arizona guarantees nor is in any way responsible for its accuracy.

2018 Sold Properties Keysafe Analysis – All Residential



2018 All Residential Terms of Sale by Terms and Type



Please note: The data contained in this report is dynamic in nature and therefore subject to change and adjust with the passage of time. These figures and charts are an approximation of the flow of business as observed through the MLS of Southern Arizona. This report does not represent all real estate activity in the area as it does not include unrepresented sales, commercial sales or a substantial portion of new home sales. Though the data and materials presented here are deemed to be substantially correct, neither the Tucson Association of REALTORS® nor the MLS of Southern Arizona guarantees nor is in any way responsible for its accuracy.